

# Housing and Construction

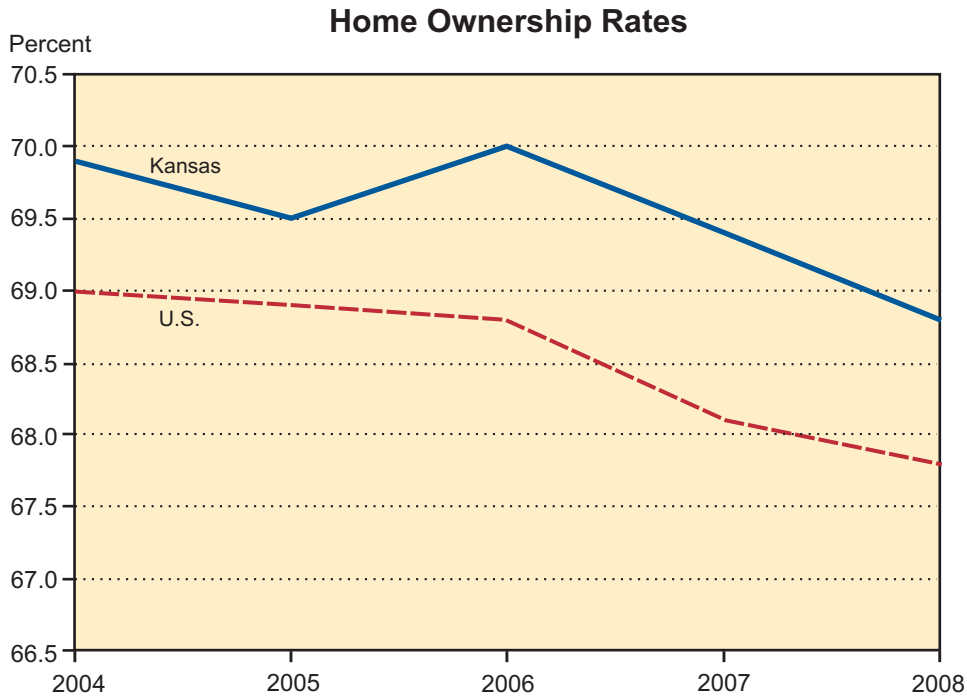
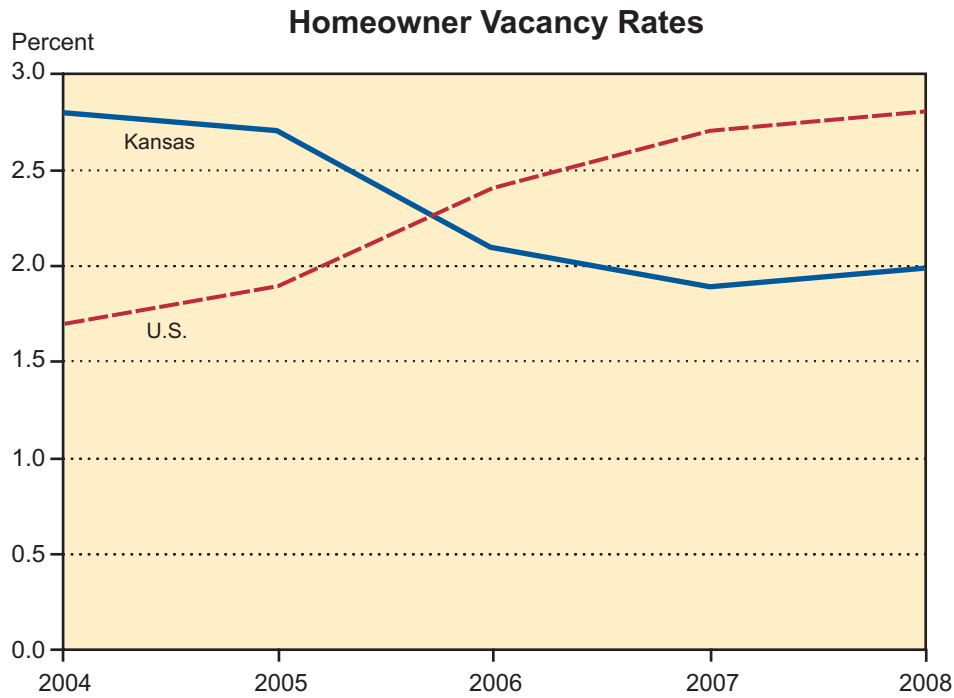
Housing and  
Construction

**Vacancy and Ownership Rates, Kansas, Surrounding States, and the U.S.  
2004-2008**

| State                | Rental Vacancy Rates |             |             |             |             | Homeowner Vacancy Rates |            |            |            |            | Homeownership Rates |             |             |             |             |
|----------------------|----------------------|-------------|-------------|-------------|-------------|-------------------------|------------|------------|------------|------------|---------------------|-------------|-------------|-------------|-------------|
|                      | 2004                 | 2005        | 2006        | 2007        | 2008        | 2004                    | 2005       | 2006       | 2007       | 2008       | 2004                | 2005        | 2006        | 2007        | 2008        |
| Colorado             | 12.7                 | 13.5        | 10.5        | 10.1        | 8.3         | 2.8                     | 2.7        | 3.0        | 3.1        | 3.1        | 71.1                | 71.0        | 70.1        | 70.2        | 69.0        |
| Iowa                 | 9.4                  | 13.1        | 13.5        | 10.9        | 8.9         | 2.4                     | 2.4        | 2.7        | 2.9        | 2.4        | 73.2                | 73.9        | 74.0        | 73.7        | 74.0        |
| <b>Kansas</b>        | <b>13.6</b>          | <b>12.8</b> | <b>11.3</b> | <b>11.1</b> | <b>10.3</b> | <b>2.8</b>              | <b>2.7</b> | <b>2.1</b> | <b>1.9</b> | <b>2.0</b> | <b>69.9</b>         | <b>69.5</b> | <b>70.0</b> | <b>69.4</b> | <b>68.8</b> |
| Missouri             | 10.3                 | 13.8        | 11.3        | 11.7        | 11.3        | 3.1                     | 2.6        | 2.8        | 2.1        | 2.6        | 72.4                | 72.3        | 71.9        | 70.4        | 71.4        |
| Nebraska             | 9.5                  | 10.3        | 10.2        | 10.2        | 9.0         | 1.5                     | 1.8        | 2.6        | 2.5        | 2.3        | 71.2                | 70.2        | 67.6        | 68.2        | 69.6        |
| Oklahoma             | 13.9                 | 12.6        | 11.2        | 9.8         | 9.0         | 2.7                     | 2.5        | 2.4        | 2.4        | 2.7        | 71.1                | 72.9        | 71.6        | 70.3        | 70.4        |
| <b>United States</b> | <b>10.2</b>          | <b>9.8</b>  | <b>9.7</b>  | <b>9.7</b>  | <b>10.0</b> | <b>1.7</b>              | <b>1.9</b> | <b>2.4</b> | <b>2.7</b> | <b>2.8</b> | <b>69.0</b>         | <b>68.9</b> | <b>68.8</b> | <b>68.1</b> | <b>67.8</b> |

Source: U.S. Census Bureau, *Housing Vacancies and Homeownership, Annual Statistics: 2008*, <http://www.census.gov/hhes/www/housing/hvs/annual08/ann08ind.html> (accessed April 1, 2009).

# Vacancy and Ownership Rates Kansas and the U.S., 2004-2008



Source: Institute for Policy & Social Research; data from the U.S. Census Bureau.

**Median Gross Rent and Median Gross Rent as a  
Percentage of Household Income, by State, 2000 and 2007**

| State                | 2000         |   | 2007         |             |   |
|----------------------|--------------|---|--------------|-------------|---|
|                      | Median Rent  | Median Rent as a Percentage of Household Income in 1999 | Median Rent  | MOE*        | Median Rent as a Percentage of Household Income |
| Alabama              | \$447        | 24.8  | \$601        | +/-7        | 29.2  |
| Alaska               | 720          | 24.8  | 918          | +/-29       | 26.4  |
| Arizona              | 619          | 26.6  | 819          | +/-9        | 30.0  |
| Arkansas             | 453          | 24.4  | 573          | +/-9        | 28.9  |
| California           | 747          | 27.7  | 1,078        | +/-5        | 31.9  |
| Colorado             | 671          | 26.4  | 788          | +/-9        | 29.7  |
| Connecticut          | 681          | 25.4  | 931          | +/-13       | 30.2  |
| Delaware             | 639          | 24.3  | 910          | +/-25       | 30.6  |
| District of Columbia | 618          | 24.8  | 934          | +/-27       | 29.4  |
| Florida              | 641          | 27.5  | 925          | +/-5        | 33.1  |
| Georgia              | 613          | 24.9  | 768          | +/-7        | 29.6  |
| Hawaii               | 779          | 27.2  | 1,194        | +/-26       | 31.6  |
| Idaho                | 515          | 25.3  | 654          | +/-11       | 26.8  |
| Illinois             | 605          | 24.4  | 783          | +/-5        | 30.0  |
| Indiana              | 521          | 23.9  | 638          | +/-5        | 27.8  |
| Iowa                 | 470          | 23.2  | 567          | +/-8        | 26.7  |
| <b>Kansas</b>        | <b>498</b>   | <b>23.4</b>   | <b>623</b>   | <b>+/-8</b> | <b>26.4</b>                                     |
| Kentucky             | 445          | 24.0  | 563          | +/-6        | 27.8  |
| Louisiana            | 466          | 25.8  | 651          | +/-10       | 30.5  |
| Maine                | 497          | 25.3  | 650          | +/-16       | 28.7  |
| Maryland             | 689          | 24.7  | 1,000        | +/-10       | 29.7  |
| Massachusetts        | 684          | 25.5  | 946          | +/-8        | 29.9  |
| Michigan             | 546          | 24.4  | 683          | +/-6        | 31.2  |
| Minnesota            | 566          | 24.7  | 711          | +/-7        | 28.7  |
| Mississippi          | 439          | 25.0  | 609          | +/-13       | 30.6  |
| Missouri             | 484          | 24.0  | 618          | +/-6        | 28.7  |
| Montana              | 447          | 25.3  | 579          | +/-13       | 26.0  |
| Nebraska             | 491          | 23.0  | 614          | +/-10       | 26.6  |
| Nevada               | 699          | 26.5  | 980          | +/-13       | 30.0  |
| New Hampshire        | 646          | 24.2  | 892          | +/-15       | 27.9  |
| New Jersey           | 751          | 25.5  | 1,026        | +/-8        | 30.6  |
| New Mexico           | 503          | 26.6  | 637          | +/-11       | 28.8  |
| New York             | 672          | 26.8  | 907          | +/-6        | 30.2  |
| North Carolina       | 548          | 24.3  | 678          | +/-6        | 28.8  |
| North Dakota         | 412          | 22.3  | 516          | +/-11       | 25.8  |
| Ohio                 | 515          | 24.2  | 643          | +/-5        | 29.5  |
| Oklahoma             | 456          | 24.3  | 588          | +/-7        | 27.5  |
| Oregon               | 620          | 26.9  | 743          | +/-8        | 29.1  |
| Pennsylvania         | 531          | 25.0  | 685          | +/-5        | 28.8  |
| Rhode Island         | 553          | 25.7  | 830          | +/-14       | 30.0  |
| South Carolina       | 510          | 24.4  | 645          | +/-9        | 28.3  |
| South Dakota         | 426          | 22.9  | 526          | +/-20       | 25.9  |
| Tennessee            | 505          | 24.8  | 634          | +/-6        | 28.1  |
| Texas                | 574          | 24.4  | 734          | +/-4        | 28.9  |
| Utah                 | 597          | 24.9  | 733          | +/-12       | 26.8  |
| Vermont              | 553          | 26.2  | 756          | +/-21       | 29.7  |
| Virginia             | 650          | 24.5  | 892          | +/-9        | 28.4  |
| Washington           | 663          | 26.5  | 816          | +/-8        | 28.9  |
| West Virginia        | 401          | 25.8  | 525          | +/-11       | 27.8  |
| Wisconsin            | 540          | 23.4  | 673          | +/-6        | 27.7  |
| Wyoming              | 437          | 22.5  | 636          | +/-21       | 22.7  |
| <b>United States</b> | <b>\$602</b> | <b>25.5</b>   | <b>\$789</b> | <b>+/-2</b> | <b>29.7</b>                                     |

Source: U.S. Census Bureau, Census 2000 Brief, *Housing Costs of Renters: 2000* (C2KBR-21),

<http://www.census.gov/prod/2003pubs/c2kbr-21.pdf> (accessed May 15, 2007); 2007 American Community Survey.

\* MOE represents a 90% Margin of Error.

Median gross rent is the monthly rent agreed or contracted for plus the estimated monthly cost of utilities and fuels. Note Census 2000 excludes the rent of single-family units on 10 or more acres.

**Housing Characteristics in Kansas, by County, 2000**

| County      | Housing Units |                           | Vacant Housing Units |                           |                        | Housing Tenure<br>Occupied Housing Units |        |
|-------------|---------------|---------------------------|----------------------|---------------------------|------------------------|--|--------|
|             | Total         | Occupied<br>Housing Units | Total                | Homeowner<br>Vacancy Rate | Rental<br>Vacancy Rate | Owned                                    | Rented |
| Allen       | 6,449         | 5,775                     | 674                  | 2.3                       | 8.8                    | 4,331                                    | 1,444  |
| Anderson    | 3,596         | 3,221                     | 375                  | 2.6                       | 11.4                   | 2,576                                    | 645    |
| Atchison    | 6,818         | 6,275                     | 543                  | 1.4                       | 9.9                    | 4,599                                    | 1,676  |
| Barber      | 2,740         | 2,235                     | 505                  | 4.6                       | 14.6                   | 1,683                                    | 552    |
| Barton      | 12,888        | 11,393                    | 1,495                | 3.1                       | 12.5                   | 8,212                                    | 3,181  |
| Bourbon     | 7,135         | 6,161                     | 974                  | 2.1                       | 9.2                    | 4,557                                    | 1,604  |
| Brown       | 4,815         | 4,318                     | 497                  | 3.2                       | 8.0                    | 3,083                                    | 1,235  |
| Butler      | 23,176        | 21,527                    | 1,649                | 2.3                       | 9.8                    | 16,722                                   | 4,805  |
| Chase       | 1,529         | 1,246                     | 283                  | 3.6                       | 5.1                    | 913                                      | 333    |
| Chautauqua  | 2,169         | 1,796                     | 373                  | 3.0                       | 10.3                   | 1,474                                    | 322    |
| Cherokee    | 10,031        | 8,875                     | 1,156                | 2.8                       | 13.1                   | 6,753                                    | 2,122  |
| Cheyenne    | 1,636         | 1,360                     | 276                  | 6.1                       | 7.5                    | 1,050                                    | 310    |
| Clark       | 1,111         | 979                       | 132                  | 4.0                       | 9.8                    | 748                                      | 231    |
| Clay        | 4,084         | 3,617                     | 467                  | 2.1                       | 13.6                   | 2,776                                    | 841    |
| Cloud       | 4,838         | 4,163                     | 675                  | 4.4                       | 15.5                   | 3,093                                    | 1,070  |
| Coffey      | 3,876         | 3,489                     | 387                  | 2.4                       | 10.3                   | 2,733                                    | 756    |
| Comanche    | 1,088         | 872                       | 216                  | 7.3                       | 7.3                    | 644                                      | 228    |
| Cowley      | 15,673        | 14,039                    | 1,634                | 2.2                       | 12.6                   | 9,941                                    | 4,098  |
| Crawford    | 17,221        | 15,504                    | 1,717                | 2.4                       | 9.2                    | 9,983                                    | 5,521  |
| Decatur     | 1,821         | 1,494                     | 327                  | 4.2                       | 17.7                   | 1,136                                    | 358    |
| Dickinson   | 8,686         | 7,903                     | 783                  | 3.1                       | 9.9                    | 5,908                                    | 1,995  |
| Doniphan    | 3,489         | 3,173                     | 316                  | 1.5                       | 8.8                    | 2,365                                    | 808    |
| Douglas     | 40,250        | 38,486                    | 1,764                | 1.7                       | 3.8                    | 19,975                                   | 18,511 |
| Edwards     | 1,754         | 1,455                     | 299                  | 5.8                       | 12.4                   | 1,131                                    | 324    |
| Elk         | 1,860         | 1,412                     | 448                  | 6.0                       | 9.8                    | 1,145                                    | 267    |
| Ellis       | 12,078        | 11,193                    | 885                  | 1.6                       | 6.9                    | 7,089                                    | 4,104  |
| Ellsworth   | 3,228         | 2,481                     | 747                  | 3.2                       | 13.8                   | 1,976                                    | 505    |
| Finney      | 13,763        | 12,948                    | 815                  | 1.4                       | 7.8                    | 8,391                                    | 4,557  |
| Ford        | 11,650        | 10,852                    | 798                  | 1.7                       | 8.5                    | 7,034                                    | 3,818  |
| Franklin    | 10,229        | 9,452                     | 777                  | 2.1                       | 6.7                    | 6,943                                    | 2,509  |
| Geary       | 11,959        | 10,458                    | 1,501                | 2.9                       | 12.8                   | 5,277                                    | 5,181  |
| Gove        | 1,423         | 1,245                     | 178                  | 3.7                       | 10.7                   | 994                                      | 251    |
| Graham      | 1,553         | 1,263                     | 290                  | 5.5                       | 16.7                   | 1,004                                    | 259    |
| Grant       | 3,027         | 2,742                     | 285                  | 2.2                       | 16.5                   | 2,046                                    | 696    |
| Gray        | 2,181         | 2,045                     | 136                  | 1.5                       | 4.6                    | 1,486                                    | 559    |
| Greeley     | 712           | 602                       | 110                  | 3.2                       | 8.3                    | 448                                      | 154    |
| Greenwood   | 4,273         | 3,234                     | 1,039                | 4.0                       | 7.7                    | 2,431                                    | 803    |
| Hamilton    | 1,211         | 1,054                     | 157                  | 3.7                       | 14.1                   | 732                                      | 322    |
| Harper      | 3,270         | 2,773                     | 497                  | 4.6                       | 9.4                    | 2,059                                    | 714    |
| Harvey      | 13,378        | 12,581                    | 797                  | 1.7                       | 7.3                    | 9,042                                    | 3,539  |
| Haskell     | 1,639         | 1,481                     | 158                  | 3.5                       | 9.8                    | 1,069                                    | 412    |
| Hodgeman    | 945           | 796                       | 149                  | 3.4                       | 12.3                   | 625                                      | 171    |
| Jackson     | 5,094         | 4,727                     | 367                  | 1.9                       | 8.3                    | 3,811                                    | 916    |
| Jefferson   | 7,491         | 6,830                     | 661                  | 2.1                       | 7.0                    | 5,792                                    | 1,038  |
| Jewell      | 2,103         | 1,695                     | 408                  | 2.0                       | 9.6                    | 1,346                                    | 349    |
| Johnson     | 181,612       | 174,570                   | 7,042                | 1.1                       | 6.5                    | 126,190                                  | 48,380 |
| Kearny      | 1,657         | 1,542                     | 115                  | 1.6                       | 7.6                    | 1,130                                    | 412    |
| Kingman     | 3,852         | 3,371                     | 481                  | 1.6                       | 8.2                    | 2,623                                    | 748    |
| Kiowa       | 1,643         | 1,365                     | 278                  | 4.2                       | 12.9                   | 980                                      | 385    |
| Labette     | 10,306        | 9,194                     | 1,112                | 2.7                       | 9.7                    | 6,727                                    | 2,467  |
| Lane        | 1,065         | 910                       | 155                  | 4.9                       | 10.4                   | 703                                      | 207    |
| Leavenworth | 24,401        | 23,071                    | 1,330                | 1.5                       | 5.9                    | 15,450                                   | 7,621  |
| Lincoln     | 1,853         | 1,529                     | 324                  | 7.3                       | 6.7                    | 1,197                                    | 332    |
| Linn        | 4,720         | 3,807                     | 913                  | 1.8                       | 7.4                    | 3,143                                    | 664    |

**Housing Characteristics in Kansas, by County, 2000**

| County        | Housing Units    |                           | Vacant Housing Units |                           |                        | Housing Tenure<br>Occupied Housing Units |                |
|---------------|------------------|---------------------------|----------------------|---------------------------|------------------------|--|----------------|
|               | Total            | Occupied<br>Housing Units | Total                | Homeowner<br>Vacancy Rate | Rental<br>Vacancy Rate | Owned                                    | Rented         |
| Logan         | 1,423            | 1,243                     | 180                  | 3.1                       | 13.2                   | 948                                      | 295            |
| Lyon          | 14,757           | 13,691                    | 1,066                | 1.6                       | 8.2                    | 8,352                                    | 5,339          |
| McPherson     | 11,830           | 11,205                    | 625                  | 1.5                       | 6.6                    | 8,293                                    | 2,912          |
| Marion        | 5,882            | 5,114                     | 768                  | 3.4                       | 10.9                   | 4,087                                    | 1,027          |
| Marshall      | 4,999            | 4,458                     | 541                  | 2.2                       | 12.7                   | 3,544                                    | 914            |
| Meade         | 1,968            | 1,728                     | 240                  | 4.3                       | 10.7                   | 1,285                                    | 443            |
| Miami         | 10,984           | 10,365                    | 619                  | 1.7                       | 6.0                    | 8,148                                    | 2,217          |
| Mitchell      | 3,340            | 2,850                     | 490                  | 2.6                       | 10.9                   | 2,127                                    | 723            |
| Montgomery    | 17,207           | 14,903                    | 2,304                | 3.4                       | 16.1                   | 10,674                                   | 4,229          |
| Morris        | 3,160            | 2,539                     | 621                  | 1.8                       | 7.6                    | 1,980                                    | 559            |
| Morton        | 1,519            | 1,306                     | 213                  | 3.7                       | 13.0                   | 931                                      | 375            |
| Nemaha        | 4,340            | 3,959                     | 381                  | 3.2                       | 7.6                    | 3,200                                    | 759            |
| Neosho        | 7,461            | 6,739                     | 722                  | 2.5                       | 8.4                    | 5,026                                    | 1,713          |
| Ness          | 1,835            | 1,516                     | 319                  | 5.3                       | 12.3                   | 1,152                                    | 364            |
| Norton        | 2,673            | 2,266                     | 407                  | 4.7                       | 7.5                    | 1,763                                    | 503            |
| Osage         | 7,018            | 6,490                     | 528                  | 2.0                       | 8.1                    | 5,179                                    | 1,311          |
| Osborne       | 2,419            | 1,940                     | 479                  | 4.0                       | 14.9                   | 1,529                                    | 411            |
| Ottawa        | 2,755            | 2,430                     | 325                  | 2.8                       | 11.9                   | 1,994                                    | 436            |
| Pawnee        | 3,114            | 2,739                     | 375                  | 2.8                       | 12.8                   | 2,033                                    | 706            |
| Phillips      | 3,088            | 2,496                     | 592                  | 7.1                       | 18.1                   | 1,945                                    | 551            |
| Pottawatomie  | 7,311            | 6,771                     | 540                  | 1.4                       | 8.3                    | 5,311                                    | 1,460          |
| Pratt         | 4,633            | 3,963                     | 670                  | 2.6                       | 11.8                   | 2,909                                    | 1,054          |
| Rawlins       | 1,565            | 1,269                     | 296                  | 6.1                       | 12.5                   | 975                                      | 294            |
| Reno          | 27,625           | 25,498                    | 2,127                | 1.9                       | 10.1                   | 18,022                                   | 7,476          |
| Republic      | 3,113            | 2,557                     | 556                  | 4.6                       | 11.8                   | 2,021                                    | 536            |
| Rice          | 4,609            | 4,050                     | 559                  | 2.5                       | 9.4                    | 3,102                                    | 948            |
| Riley         | 23,397           | 22,137                    | 1,260                | 2.0                       | 4.1                    | 10,454                                   | 11,683         |
| Rooks         | 2,758            | 2,362                     | 396                  | 5.2                       | 10.7                   | 1,821                                    | 541            |
| Rush          | 1,928            | 1,548                     | 380                  | 6.9                       | 17.8                   | 1,270                                    | 278            |
| Russell       | 3,871            | 3,207                     | 664                  | 4.0                       | 15.9                   | 2,412                                    | 795            |
| Saline        | 22,695           | 21,436                    | 1,259                | 1.6                       | 7.4                    | 14,799                                   | 6,637          |
| Scott         | 2,291            | 2,045                     | 246                  | 2.4                       | 10.1                   | 1,521                                    | 524            |
| Sedgwick      | 191,133          | 176,444                   | 14,689               | 1.8                       | 11.5                   | 116,719                                  | 59,725         |
| Seward        | 8,027            | 7,419                     | 608                  | 1.9                       | 9.6                    | 4,754                                    | 2,665          |
| Shawnee       | 73,768           | 68,920                    | 4,848                | 1.3                       | 7.3                    | 46,483                                   | 22,437         |
| Sheridan      | 1,263            | 1,124                     | 139                  | 2.9                       | 10.0                   | 925                                      | 199            |
| Sherman       | 3,184            | 2,758                     | 426                  | 2.5                       | 17.1                   | 1,899                                    | 859            |
| Smith         | 2,326            | 1,953                     | 373                  | 4.5                       | 8.7                    | 1,555                                    | 398            |
| Stafford      | 2,458            | 2,010                     | 448                  | 4.9                       | 12.9                   | 1,563                                    | 447            |
| Stanton       | 1,007            | 858                       | 149                  | 4.7                       | 14.0                   | 582                                      | 276            |
| Stevens       | 2,265            | 1,988                     | 277                  | 2.0                       | 11.6                   | 1,502                                    | 486            |
| Sumner        | 10,877           | 9,888                     | 989                  | 2.7                       | 10.2                   | 7,578                                    | 2,310          |
| Thomas        | 3,562            | 3,226                     | 336                  | 2.3                       | 7.7                    | 2,227                                    | 999            |
| Trego         | 1,723            | 1,412                     | 311                  | 2.7                       | 13.3                   | 1,145                                    | 267            |
| Wabaunsee     | 3,033            | 2,633                     | 400                  | 2.8                       | 7.9                    | 2,187                                    | 446            |
| Wallace       | 791              | 674                       | 117                  | 8.0                       | 6.1                    | 521                                      | 153            |
| Washington    | 3,142            | 2,673                     | 469                  | 2.3                       | 13.0                   | 2,124                                    | 549            |
| Wichita       | 1,119            | 967                       | 152                  | 1.9                       | 14.9                   | 716                                      | 251            |
| Wilson        | 4,937            | 4,203                     | 734                  | 3.2                       | 8.1                    | 3,283                                    | 920            |
| Woodson       | 2,076            | 1,642                     | 434                  | 3.6                       | 11.8                   | 1,337                                    | 305            |
| Wyandotte     | 65,892           | 59,700                    | 6,192                | 1.8                       | 8.3                    | 37,527                                   | 22,173         |
| <b>Kansas</b> | <b>1,131,200</b> | <b>1,037,891</b>          | <b>93,309</b>        | <b>2.0</b>                | <b>8.8</b>             | <b>718,703</b>                           | <b>319,188</b> |

Source: U.S. Census Bureau, 2000 Census of Population and Housing, *Profiles of General Demographic Characteristics: Kansas* (DP-1), <http://www.census.gov/prod/cen2000/dp1/2kh20.pdf> (accessed May 15 2007).

**Housing Units in Kansas, by County  
Census Years 1950-2000**

| <b>County</b> | <b>1950</b> | <b>1960</b> | <b>1970</b> | <b>1980</b> | <b>1990</b> | <b>2000</b> |
|---------------|-------------|-------------|-------------|-------------|-------------|-------------|
| Allen         | 6,298       | 6,263       | 5,884       | 6,838       | 6,454       | 6,449       |
| Anderson      | 3,533       | 3,407       | 3,205       | 3,628       | 3,514       | 3,596       |
| Atchison      | 6,620       | 6,750       | 6,309       | 6,910       | 6,691       | 6,818       |
| Barber        | 3,083       | 3,374       | 3,051       | 3,033       | 3,120       | 2,740       |
| Barton        | 9,194       | 10,718      | 10,636      | 12,871      | 13,144      | 12,888      |
| Bourbon       | 6,782       | 6,555       | 6,214       | 7,194       | 6,920       | 7,135       |
| Brown         | 5,372       | 5,164       | 4,674       | 5,224       | 4,890       | 4,815       |
| Butler        | 10,552      | 13,240      | 13,824      | 17,248      | 20,072      | 23,178      |
| Chase         | 1,780       | 1,650       | 1,522       | 1,568       | 1,547       | 1,529       |
| Chautauqua    | 2,776       | 2,550       | 2,270       | 2,320       | 2,249       | 2,169       |
| Cherokee      | 8,861       | 8,577       | 8,564       | 9,315       | 9,428       | 10,031      |
| Cheyenne      | 1,792       | 1,806       | 1,716       | 1,782       | 1,687       | 1,636       |
| Clark         | 1,333       | 1,300       | 1,301       | 1,278       | 1,327       | 1,111       |
| Clay          | 4,187       | 4,145       | 4,004       | 4,247       | 4,138       | 4,084       |
| Cloud         | 5,593       | 5,291       | 5,206       | 5,497       | 5,198       | 4,838       |
| Coffey        | 3,683       | 3,449       | 3,083       | 3,861       | 3,712       | 3,876       |
| Comanche      | 1,326       | 1,371       | 1,209       | 1,171       | 1,256       | 1,088       |
| Cowley        | 12,154      | 13,510      | 13,251      | 15,133      | 15,569      | 15,673      |
| Crawford      | 14,419      | 14,499      | 14,970      | 16,822      | 16,526      | 17,221      |
| Decatur       | 2,273       | 2,142       | 2,175       | 2,154       | 2,063       | 1,821       |
| Dickinson     | 7,304       | 7,600       | 7,805       | 8,684       | 8,415       | 8,686       |
| Doniphan      | 3,694       | 3,439       | 3,264       | 3,805       | 3,337       | 3,489       |
| Douglas       | 9,774       | 13,383      | 18,275      | 25,494      | 31,782      | 40,250      |
| Edwards       | 2,054       | 1,929       | 1,882       | 1,990       | 1,867       | 1,754       |
| Elk           | 2,487       | 2,258       | 1,869       | 1,975       | 1,743       | 1,860       |
| Ellis         | 5,117       | 6,112       | 7,760       | 10,248      | 11,115      | 12,078      |
| Ellsworth     | 2,904       | 2,965       | 2,723       | 3,270       | 3,317       | 3,228       |
| Finney        | 4,630       | 5,072       | 6,034       | 8,994       | 11,696      | 13,763      |
| Ford          | 6,338       | 6,909       | 7,752       | 9,832       | 10,842      | 11,650      |
| Franklin      | 6,769       | 7,110       | 7,205       | 8,763       | 8,926       | 10,229      |
| Geary         | 6,369       | 8,337       | 8,751       | 11,088      | 11,952      | 11,959      |
| Gove          | 1,271       | 1,363       | 1,312       | 1,596       | 1,494       | 1,423       |
| Graham        | 1,602       | 1,830       | 1,655       | 1,809       | 1,753       | 1,553       |
| Grant         | 1,401       | 1,543       | 1,924       | 2,602       | 2,599       | 3,027       |
| Gray          | 1,483       | 1,499       | 1,626       | 2,010       | 2,114       | 2,181       |
| Greeley       | 600         | 674         | 674         | 815         | 801         | 712         |
| Greenwood     | 4,786       | 4,670       | 4,088       | 4,451       | 4,243       | 4,273       |
| Hamilton      | 1,184       | 1,161       | 1,092       | 1,273       | 1,214       | 1,211       |
| Harper        | 3,665       | 3,757       | 3,488       | 3,563       | 3,481       | 3,270       |
| Harvey        | 6,930       | 8,548       | 9,215       | 11,563      | 12,290      | 13,378      |
| Haskell       | 802         | 959         | 1,247       | 1,495       | 1,586       | 1,639       |
| Hodgeman      | 1,011       | 1,012       | 1,007       | 1,054       | 1,022       | 945         |
| Jackson       | 3,937       | 3,888       | 3,874       | 4,492       | 4,564       | 5,094       |
| Jefferson     | 3,839       | 3,862       | 4,081       | 5,817       | 6,314       | 7,491       |
| Jewell        | 3,436       | 3,094       | 2,633       | 2,791       | 2,409       | 2,103       |
| Johnson       | 20,267      | 43,429      | 67,997      | 102,827     | 144,143     | 181,801     |
| Kearny        | 1,042       | 998         | 1,045       | 1,409       | 1,561       | 1,657       |
| Kingman       | 3,387       | 3,444       | 3,328       | 3,681       | 3,645       | 3,852       |
| Kiowa         | 1,605       | 1,642       | 1,665       | 1,712       | 1,738       | 1,643       |
| Labette       | 9,894       | 10,070      | 9,813       | 10,619      | 10,641      | 10,306      |
| Lane          | 867         | 1,063       | 1,034       | 1,159       | 1,117       | 1,065       |
| Leavenworth   | 11,542      | 13,069      | 14,996      | 18,441      | 21,264      | 24,401      |
| Lincoln       | 2,365       | 2,184       | 2,039       | 2,110       | 1,864       | 1,853       |
| Linn          | 3,672       | 3,383       | 3,339       | 3,977       | 4,811       | 4,720       |

**Housing Units in Kansas, by County  
Census Years 1950-2000**

| <b>County</b> | <b>1950</b>    | <b>1960</b>    | <b>1970</b>    | <b>1980</b>    | <b>1990</b>      | <b>2000</b>      |
|---------------|----------------|----------------|----------------|----------------|------------------|------------------|
| Logan         | 1,326          | 1,370          | 1,383          | 1,616          | 1,466            | 1,423            |
| Lyon          | 8,853          | 9,134          | 11,014         | 13,980         | 14,346           | 14,757           |
| McPherson     | 7,690          | 8,076          | 8,582          | 10,464         | 10,941           | 11,830           |
| Marion        | 5,373          | 5,264          | 5,285          | 5,864          | 5,659            | 5,882            |
| Marshall      | 6,324          | 5,961          | 5,405          | 5,584          | 5,269            | 4,999            |
| Meade         | 1,823          | 1,924          | 1,914          | 2,048          | 2,049            | 1,968            |
| Miami         | 6,087          | 6,627          | 6,635          | 8,457          | 8,971            | 10,984           |
| Mitchell      | 3,643          | 3,391          | 3,131          | 3,510          | 3,359            | 3,340            |
| Montgomery    | 16,403         | 17,056         | 16,233         | 18,153         | 17,920           | 17,208           |
| Morris        | 3,128          | 3,032          | 2,908          | 3,187          | 3,149            | 3,160            |
| Morton        | 842            | 1,138          | 1,273          | 1,454          | 1,515            | 1,519            |
| Nemaha        | 4,659          | 4,375          | 4,214          | 4,432          | 4,319            | 4,340            |
| Neosho        | 6,929          | 7,102          | 7,134          | 7,887          | 7,726            | 7,461            |
| Ness          | 2,000          | 2,007          | 1,950          | 2,107          | 2,048            | 1,835            |
| Norton        | 2,918          | 2,893          | 2,815          | 2,983          | 2,798            | 2,673            |
| Osage         | 4,462          | 4,788          | 4,918          | 6,152          | 6,324            | 7,018            |
| Osborne       | 3,119          | 2,940          | 2,729          | 2,774          | 2,496            | 2,419            |
| Ottawa        | 2,666          | 2,740          | 2,505          | 2,667          | 2,591            | 2,755            |
| Pawnee        | 2,883          | 3,359          | 3,181          | 3,442          | 3,412            | 3,114            |
| Phillips      | 3,386          | 3,324          | 3,091          | 3,503          | 3,264            | 3,088            |
| Pottawatomie  | 4,095          | 4,234          | 4,313          | 6,033          | 6,472            | 7,311            |
| Pratt         | 4,217          | 4,485          | 4,099          | 4,450          | 4,620            | 4,633            |
| Rawlins       | 1,843          | 1,822          | 1,724          | 1,826          | 1,744            | 1,565            |
| Reno          | 17,957         | 20,551         | 21,792         | 26,574         | 26,607           | 27,625           |
| Republic      | 4,272          | 4,007          | 3,634          | 3,801          | 3,283            | 3,113            |
| Rice          | 5,215          | 5,003          | 4,745          | 4,974          | 4,868            | 4,609            |
| Riley         | 8,390          | 11,631         | 14,865         | 20,873         | 22,868           | 23,400           |
| Rooks         | 2,943          | 3,413          | 2,847          | 3,136          | 2,979            | 2,758            |
| Rush          | 2,305          | 2,336          | 2,080          | 2,100          | 1,999            | 1,928            |
| Russell       | 4,431          | 4,143          | 3,735          | 4,129          | 4,079            | 3,871            |
| Saline        | 11,242         | 17,295         | 16,588         | 20,316         | 21,129           | 22,695           |
| Scott         | 1,478          | 1,686          | 1,955          | 2,344          | 2,305            | 2,291            |
| Sedgwick      | 73,829         | 114,038        | 120,666        | 145,863        | 170,159          | 191,133          |
| Seward        | 3,219          | 4,991          | 5,290          | 6,707          | 7,572            | 8,027            |
| Shawnee       | 33,917         | 46,015         | 51,940         | 64,446         | 68,991           | 73,768           |
| Sheridan      | 1,406          | 1,324          | 1,307          | 1,444          | 1,324            | 1,263            |
| Sherman       | 2,395          | 2,351          | 2,763          | 3,292          | 3,177            | 3,184            |
| Smith         | 3,449          | 3,182          | 2,750          | 2,815          | 2,615            | 2,326            |
| Stafford      | 3,157          | 2,927          | 2,602          | 2,709          | 2,666            | 2,458            |
| Stanton       | 580            | 706            | 777            | 960            | 956              | 1,007            |
| Stevens       | 1,365          | 1,480          | 1,543          | 1,978          | 2,116            | 2,265            |
| Sumner        | 8,195          | 9,318          | 8,977          | 10,356         | 10,769           | 10,877           |
| Thomas        | 2,437          | 2,542          | 2,757          | 3,496          | 3,534            | 3,562            |
| Trego         | 1,773          | 1,844          | 1,731          | 1,991          | 1,851            | 1,723            |
| Wabaunsee     | 2,749          | 2,720          | 2,560          | 2,891          | 2,853            | 3,033            |
| Wallace       | 778            | 707            | 805            | 892            | 840              | 791              |
| Washington    | 4,501          | 4,115          | 3,705          | 3,579          | 3,355            | 3,142            |
| Wichita       | 801            | 925            | 1,029          | 1,293          | 1,190            | 1,119            |
| Wilson        | 5,267          | 5,173          | 4,780          | 5,372          | 5,091            | 4,937            |
| Woodson       | 2,394          | 2,270          | 2,032          | 2,294          | 2,199            | 2,076            |
| Wyandotte     | 50,395         | 58,583         | 63,484         | 68,506         | 69,114           | 65,892           |
| <b>Kansas</b> | <b>625,148</b> | <b>740,335</b> | <b>789,735</b> | <b>955,207</b> | <b>1,044,112</b> | <b>1,131,395</b> |

Source: U.S. Census Bureau, 1990 Census of Population and Housing, *Population and Housing Unit Counts: Kansas* (CPH-2-18); CQR, <http://www.census.gov/prod/cen2000/notes/cqr-ks.pdf> (accessed January 11, 2007); 2000 Census, *Profile of General Demographic Characteristics* (DP-1).

**Housing Units in Kansas, by County  
2000, 2005-2007**

| <b>County</b> | <b>Census 2000<br/>Housing Units</b> | <b>July 1, 2005r<br/>Estimate</b> | <b>July 1, 2006r<br/>Estimate</b> | <b>July 1, 2007<br/>Estimate</b> |
|---------------|--------------------------------------|-----------------------------------|-----------------------------------|----------------------------------|
| Allen         | 6,449                                | 6,487                             | 6,482                             | 6,484                            |
| Anderson      | 3,596                                | 3,684                             | 3,696                             | 3,711                            |
| Atchison      | 6,818                                | 6,959                             | 6,966                             | 6,978                            |
| Barber        | 2,740                                | 2,777                             | 2,771                             | 2,765                            |
| Barton        | 12,888                               | 12,988                            | 13,001                            | 12,982                           |
| Bourbon       | 7,135                                | 7,311                             | 7,301                             | 7,286                            |
| Brown         | 4,815                                | 4,917                             | 4,912                             | 4,904                            |
| Butler        | 23,178                               | 25,164                            | 25,386                            | 25,650                           |
| Chase         | 1,529                                | 1,552                             | 1,548                             | 1,543                            |
| Chautauqua    | 2,169                                | 2,240                             | 2,234                             | 2,227                            |
| Cherokee      | 10,031                               | 10,348                            | 10,339                            | 10,314                           |
| Cheyenne      | 1,636                                | 1,648                             | 1,643                             | 1,638                            |
| Clark         | 1,111                                | 1,146                             | 1,144                             | 1,143                            |
| Clay          | 4,084                                | 4,167                             | 4,184                             | 4,200                            |
| Cloud         | 4,838                                | 4,853                             | 4,840                             | 4,827                            |
| Coffey        | 3,876                                | 4,039                             | 4,048                             | 4,056                            |
| Comanche      | 1,088                                | 1,089                             | 1,086                             | 1,084                            |
| Cowley        | 15,673                               | 16,116                            | 16,142                            | 16,168                           |
| Crawford      | 17,221                               | 17,967                            | 18,055                            | 18,157                           |
| Decatur       | 1,821                                | 1,838                             | 1,833                             | 1,828                            |
| Dickinson     | 8,686                                | 8,867                             | 8,897                             | 8,937                            |
| Doniphan      | 3,489                                | 3,554                             | 3,556                             | 3,556                            |
| Douglas       | 40,250                               | 45,348                            | 46,040                            | 46,488                           |
| Edwards       | 1,754                                | 1,776                             | 1,771                             | 1,765                            |
| Elk           | 1,860                                | 1,927                             | 1,922                             | 1,916                            |
| Ellis         | 12,078                               | 12,360                            | 12,386                            | 12,410                           |
| Ellsworth     | 3,228                                | 3,320                             | 3,314                             | 3,306                            |
| Finney        | 13,763                               | 13,971                            | 13,945                            | 13,915                           |
| Ford          | 11,650                               | 12,017                            | 12,013                            | 12,017                           |
| Franklin      | 10,229                               | 10,951                            | 11,129                            | 11,218                           |
| Geary         | 11,959                               | 12,124                            | 12,147                            | 13,759                           |
| Gove          | 1,423                                | 1,456                             | 1,453                             | 1,449                            |
| Graham        | 1,553                                | 1,572                             | 1,578                             | 1,573                            |
| Grant         | 3,027                                | 3,089                             | 3,081                             | 3,071                            |
| Gray          | 2,181                                | 2,297                             | 2,296                             | 2,297                            |
| Greeley       | 712                                  | 723                               | 721                               | 718                              |
| Greenwood     | 4,273                                | 4,354                             | 4,342                             | 4,330                            |
| Hamilton      | 1,211                                | 1,237                             | 1,234                             | 1,232                            |
| Harper        | 3,270                                | 3,287                             | 3,286                             | 3,278                            |
| Harvey        | 13,378                               | 13,988                            | 14,082                            | 14,176                           |
| Haskell       | 1,639                                | 1,689                             | 1,684                             | 1,678                            |
| Hodgeman      | 945                                  | 978                               | 976                               | 973                              |
| Jackson       | 5,094                                | 5,379                             | 5,433                             | 5,473                            |
| Jefferson     | 7,491                                | 8,019                             | 8,127                             | 8,206                            |
| Jewell        | 2,103                                | 2,140                             | 2,135                             | 2,129                            |
| Johnson       | 181,801                              | 207,250                           | 211,337                           | 214,729                          |
| Kearny        | 1,657                                | 1,724                             | 1,721                             | 1,717                            |
| Kingman       | 3,852                                | 3,919                             | 3,911                             | 3,903                            |
| Kiowa         | 1,643                                | 1,662                             | 1,658                             | 1,653                            |
| Labette       | 10,306                               | 10,404                            | 10,398                            | 10,386                           |
| Lane          | 1,065                                | 1,060                             | 1,058                             | 1,054                            |
| Leavenworth   | 24,401                               | 26,979                            | 27,589                            | 28,003                           |
| Lincoln       | 1,853                                | 1,878                             | 1,873                             | 1,871                            |
| Linn          | 4,720                                | 4,975                             | 5,023                             | 5,055                            |
| Logan         | 1,423                                | 1,435                             | 1,433                             | 1,429                            |

**Housing Units in Kansas, by County  
2000, 2005-2007**

| <b>County</b> | <b>Census 2000<br/>Housing Units</b> | <b>July 1, 2005r<br/>Estimate</b> | <b>July 1, 2006r<br/>Estimate</b> | <b>July 1, 2007<br/>Estimate</b> |
|---------------|--------------------------------------|-----------------------------------|-----------------------------------|----------------------------------|
| Lyon          | 14,757                               | 15,056                            | 15,184                            | 15,222                           |
| McPherson     | 11,830                               | 12,365                            | 12,461                            | 12,524                           |
| Marion        | 5,882                                | 6,099                             | 6,130                             | 6,179                            |
| Marshall      | 4,999                                | 5,087                             | 5,083                             | 5,082                            |
| Meade         | 1,968                                | 1,994                             | 1,989                             | 1,984                            |
| Miami         | 10,984                               | 12,038                            | 12,270                            | 12,464                           |
| Mitchell      | 3,340                                | 3,362                             | 3,355                             | 3,349                            |
| Montgomery    | 17,208                               | 17,314                            | 17,279                            | 17,249                           |
| Morris        | 3,160                                | 3,240                             | 3,241                             | 3,246                            |
| Morton        | 1,519                                | 1,561                             | 1,558                             | 1,557                            |
| Nemaha        | 4,340                                | 4,455                             | 4,467                             | 4,461                            |
| Neosho        | 7,461                                | 7,548                             | 7,539                             | 7,523                            |
| Ness          | 1,835                                | 1,848                             | 1,842                             | 1,837                            |
| Norton        | 2,673                                | 2,698                             | 2,691                             | 2,695                            |
| Osage         | 7,018                                | 7,377                             | 7,411                             | 7,456                            |
| Osborne       | 2,419                                | 2,432                             | 2,425                             | 2,419                            |
| Ottawa        | 2,755                                | 2,829                             | 2,834                             | 2,831                            |
| Pawnee        | 3,114                                | 3,145                             | 3,142                             | 3,136                            |
| Phillips      | 3,088                                | 3,133                             | 3,124                             | 3,117                            |
| Pottawatomie  | 7,311                                | 7,869                             | 8,114                             | 8,367                            |
| Pratt         | 4,633                                | 4,775                             | 4,765                             | 4,756                            |
| Rawlins       | 1,565                                | 1,586                             | 1,582                             | 1,577                            |
| Reno          | 27,625                               | 27,986                            | 28,092                            | 28,169                           |
| Republic      | 3,113                                | 3,151                             | 3,181                             | 3,171                            |
| Rice          | 4,609                                | 4,627                             | 4,621                             | 4,619                            |
| Riley         | 23,400                               | 25,150                            | 25,486                            | 26,250                           |
| Rooks         | 2,758                                | 2,776                             | 2,771                             | 2,768                            |
| Rush          | 1,928                                | 1,944                             | 1,939                             | 1,937                            |
| Russell       | 3,871                                | 3,850                             | 3,850                             | 3,841                            |
| Saline        | 22,695                               | 23,371                            | 23,482                            | 23,566                           |
| Scott         | 2,291                                | 2,322                             | 2,317                             | 2,311                            |
| Sedgwick      | 191,133                              | 202,173                           | 204,534                           | 207,140                          |
| Seward        | 8,027                                | 8,094                             | 8,100                             | 8,120                            |
| Shawnee       | 73,768                               | 77,522                            | 78,234                            | 78,709                           |
| Sheridan      | 1,263                                | 1,309                             | 1,306                             | 1,303                            |
| Sherman       | 3,184                                | 3,262                             | 3,255                             | 3,251                            |
| Smith         | 2,326                                | 2,366                             | 2,360                             | 2,365                            |
| Stafford      | 2,458                                | 2,474                             | 2,467                             | 2,460                            |
| Stanton       | 1,007                                | 1,029                             | 1,026                             | 1,025                            |
| Stevens       | 2,265                                | 2,305                             | 2,298                             | 2,297                            |
| Sumner        | 10,877                               | 11,122                            | 11,149                            | 11,159                           |
| Thomas        | 3,562                                | 3,594                             | 3,588                             | 3,581                            |
| Trego         | 1,723                                | 1,737                             | 1,734                             | 1,729                            |
| Wabaunsee     | 3,033                                | 3,179                             | 3,200                             | 3,211                            |
| Wallace       | 791                                  | 802                               | 800                               | 799                              |
| Washington    | 3,142                                | 3,215                             | 3,208                             | 3,200                            |
| Wichita       | 1,119                                | 1,135                             | 1,132                             | 1,129                            |
| Wilson        | 4,937                                | 5,019                             | 5,007                             | 4,995                            |
| Woodson       | 2,076                                | 2,092                             | 2,088                             | 2,083                            |
| Wyandotte     | 65,892                               | 66,560                            | 67,190                            | 67,605                           |
| <b>Kansas</b> | <b>1,131,395</b>                     | <b>1,196,976</b>                  | <b>1,208,061</b>                  | <b>1,219,439</b>                 |

Source: U.S. Census Bureau, Housing Unit Estimates, *Annual Estimates of Housing Units for Counties in Kansas: April 1, 2000-July 1, 2007*, <http://www.census.gov/popest/housing/HU-EST2007-4.html> (accessed October 16, 2008); Count Question Resolution (CQR), <http://www.census.gov/dmd/www/CQR.htm> (accessed October 16, 2008).

**Housing Units in Kansas for Cities with a Population of 10,000 or More  
1980, 1990, and 2000**

| City            | 1980    | 1990    | 2000    | Percent<br>Change<br>1980-2000 |
|-----------------|---------|---------|---------|--------------------------------|
| Arkansas City   | 5,843   | 5,774   | 5,628   | -3.7                           |
| Atchison        | 4,273   | 4,267   | 4,220   | -1.2                           |
| Coffeyville     | 6,530   | 6,203   | 5,564   | -14.8                          |
| Derby           | 3,194   | 4,999   | 6,407   | 100.6                          |
| Dodge City      | 7,265   | 8,258   | 8,976   | 23.6                           |
| El Dorado       | 5,057   | 5,241   | 5,460   | 8.0                            |
| Emporia         | 10,171  | 10,732  | 11,019  | 8.3                            |
| Garden City     | 6,745   | 8,583   | 9,907   | 46.9                           |
| Great Bend      | 6,879   | 7,050   | 7,080   | 2.9                            |
| Hays            | 6,853   | 7,798   | 8,772   | 28.0                           |
| Hutchinson      | 17,099  | 17,163  | 17,693  | 3.5                            |
| Junction City   | 8,153   | 8,891   | 8,740   | 7.2                            |
| Kansas City     | 64,493  | 64,469  | 61,446  | -4.7                           |
| Lawrence        | 20,179  | 25,893  | 32,761  | 62.4                           |
| Leavenworth     | 11,425  | 12,568  | 12,936  | 13.2                           |
| Leawood         | 4,845   | 7,210   | 10,129  | 109.1                          |
| Lenexa          | 7,096   | 13,517  | 16,378  | 130.8                          |
| Liberal         | 5,857   | 6,663   | 7,014   | 19.8                           |
| McPherson       | 4,769   | 5,118   | 5,658   | 18.6                           |
| Manhattan       | 13,652  | 15,568  | 17,689  | 29.6                           |
| Merriam         | 4,640   | 5,365   | 5,042   | 8.7                            |
| Newton          | 6,555   | 6,955   | 7,277   | 11.0                           |
| Olathe          | 13,034  | 22,512  | 33,343  | 155.8                          |
| Ottawa          | 4,572   | 4,553   | 5,080   | 11.1                           |
| Overland Park   | 31,244  | 48,043  | 62,586  | 100.3                          |
| Parsons         | 5,428   | 5,450   | 5,359   | -1.3                           |
| Pittsburg       | 8,494   | 8,445   | 8,855   | 4.3                            |
| Prairie Village | 9,672   | 10,031  | 10,126  | 4.7                            |
| Salina          | 17,670  | 18,409  | 19,599  | 10.9                           |
| Shawnee         | 11,137  | 15,206  | 19,086  | 71.4                           |
| Topeka          | 51,556  | 54,664  | 56,435  | 9.5                            |
| Wichita         | 116,953 | 135,069 | 152,952 | 30.8                           |
| Winfield        | 4,400   | 4,835   | 5,049   | 14.8                           |

Source: U.S. Census Bureau, 1990 Census Population and Housing, *Population and Housing Unit Counts: Kansas* (CPH-2-18, CPH-L-157); CQR, <http://www.census.gov/prod/cen2000/notes/cqr-ks.pdf> (accessed January 11, 2007); 2000 Census, *Profile of General Demographic Characteristics* (DP-1).

**Selected Housing Characteristics in Kansas, by County, 1990 and 2000**

| County     | 1990                                 |                                     |                      | 2000                                 |                                     |                      |
|------------|--------------------------------------|-------------------------------------|----------------------|--------------------------------------|-------------------------------------|----------------------|
|            | Percent of Occupied Housing Units    |                                     |                      | Percent of Occupied Housing Units    |                                     |                      |
|            | Lacking Complete Plumbing Facilities | Lacking Complete Kitchen Facilities | No Telephone Service | Lacking Complete Plumbing Facilities | Lacking Complete Kitchen Facilities | No Telephone Service |
| Allen      | 1.2                                  | 1.3                                 | 7.7                  | 0.6                                  | 0.3                                 | 5.6                  |
| Anderson   | 1.0                                  | 0.8                                 | 6.9                  | 1.4                                  | 1.0                                 | 5.5                  |
| Atchison   | 1.5                                  | 1.5                                 | 5.0                  | 0.4                                  | 0.6                                 | 3.1                  |
| Barber     | 2.5                                  | 4.8                                 | 2.6                  | 0.4                                  | 0.7                                 | 2.2                  |
| Barton     | 0.5                                  | 1.1                                 | 4.9                  | 0.5                                  | 0.8                                 | 3.7                  |
| Bourbon    | 2.1                                  | 2.2                                 | 7.1                  | 0.6                                  | 0.5                                 | 4.8                  |
| Brown      | 1.2                                  | 2.4                                 | 4.6                  | 0.4                                  | 0.8                                 | 4.2                  |
| Butler     | 0.7                                  | 1.1                                 | 4.0                  | 0.3                                  | 0.4                                 | 2.3                  |
| Chase      | 2.3                                  | 2.2                                 | 6.2                  | 0.6                                  | 0.9                                 | 4.9                  |
| Chautauqua | 2.8                                  | 5.7                                 | 9.2                  | 1.1                                  | 0.4                                 | 4.6                  |
| Cherokee   | 2.0                                  | 2.9                                 | 10.7                 | 0.6                                  | 0.9                                 | 6.1                  |
| Cheyenne   | 4.9                                  | 0.7                                 | 1.9                  | 0.8                                  | 0.7                                 | 3.7                  |
| Clark      | 6.4                                  | 7.5                                 | 3.5                  | 0.4                                  | 0.6                                 | 2.0                  |
| Clay       | 0.6                                  | 0.9                                 | 4.8                  | 0.1                                  | 0.3                                 | 3.6                  |
| Cloud      | 0.5                                  | 2.4                                 | 4.5                  | 0.4                                  | 0.4                                 | 4.0                  |
| Coffey     | 2.0                                  | 2.1                                 | 5.1                  | 0.8                                  | 1.0                                 | 2.4                  |
| Comanche   | 8.4                                  | 8.0                                 | 5.6                  | 0.1                                  | 0.5                                 | 5.5                  |
| Cowley     | 0.6                                  | 0.8                                 | 6.2                  | 0.5                                  | 0.5                                 | 0.2                  |
| Crawford   | 0.7                                  | 0.6                                 | 5.5                  | 0.6                                  | 0.6                                 | 4.1                  |
| Decatur    | 1.4                                  | 3.1                                 | 3.8                  | 0.1                                  | 0.6                                 | 2.2                  |
| Dickinson  | 1.0                                  | 1.5                                 | 5.1                  | 0.5                                  | 0.1                                 | 2.2                  |
| Doniphan   | 2.3                                  | 2.5                                 | 5.5                  | 0.5                                  | 0.5                                 | 3.2                  |
| Douglas    | 0.5                                  | 0.4                                 | 3.8                  | 0.3                                  | 0.3                                 | 2.1                  |
| Edwards    | 0.7                                  | 0.6                                 | 6.6                  | 0.3                                  | 0.6                                 | 3.2                  |
| Elk        | 1.9                                  | 1.3                                 | 6.3                  | 0.8                                  | 0.8                                 | 4.2                  |
| Ellis      | 0.6                                  | 0.8                                 | 2.8                  | 0.2                                  | 0.7                                 | 2.0                  |
| Ellsworth  | 3.8                                  | 4.8                                 | 4.3                  | 0.4                                  | 0.4                                 | 1.2                  |
| Finney     | 0.3                                  | 0.6                                 | 9.0                  | 0.7                                  | 0.7                                 | 6.6                  |
| Ford       | 1.3                                  | 2.0                                 | 8.3                  | 0.6                                  | 0.7                                 | 4.3                  |
| Franklin   | 1.0                                  | 1.2                                 | 5.8                  | 0.8                                  | 1.0                                 | 3.4                  |
| Geary      | 0.1                                  | 0.3                                 | 6.4                  | 0.4                                  | 0.3                                 | 3.1                  |
| Gove       | 0.3                                  | 1.1                                 | 1.9                  | 0.3                                  | 0.3                                 | 0.9                  |
| Graham     | 4.9                                  | 9.3                                 | 6.4                  | 0.6                                  | 0.5                                 | 2.1                  |
| Grant      | 0.0                                  | 0.0                                 | 3.5                  | 0.0                                  | 0.3                                 | 1.9                  |
| Gray       | 2.0                                  | 3.3                                 | 3.3                  | 0.3                                  | 0.0                                 | 2.2                  |
| Greeley    | 1.7                                  | 2.0                                 | 2.3                  | 0.3                                  | 0.0                                 | 1.2                  |
| Greenwood  | 0.6                                  | 0.4                                 | 6.8                  | 1.0                                  | 1.2                                 | 4.6                  |

**Selected Housing Characteristics in Kansas, by County, 1990 and 2000**

| County      | 1990                                 |                                     |                      | 2000                                 |                                     |                      |
|-------------|--------------------------------------|-------------------------------------|----------------------|--------------------------------------|-------------------------------------|----------------------|
|             | Percent of Occupied Housing Units    |                                     |                      | Percent of Occupied Housing Units    |                                     |                      |
|             | Lacking Complete Plumbing Facilities | Lacking Complete Kitchen Facilities | No Telephone Service | Lacking Complete Plumbing Facilities | Lacking Complete Kitchen Facilities | No Telephone Service |
| Hamilton    | 1.6                                  | 2.6                                 | 3.4                  | 1.1                                  | 0.6                                 | 3.0                  |
| Harper      | 2.3                                  | 2.5                                 | 4.1                  | 0.2                                  | 0.5                                 | 4.2                  |
| Harvey      | 0.5                                  | 1.0                                 | 4.8                  | 0.2                                  | 0.4                                 | 2.6                  |
| Haskell     | 2.4                                  | 2.8                                 | 6.0                  | 1.0                                  | 1.3                                 | 3.4                  |
| Hodgeman    | 0.7                                  | 0.7                                 | 2.1                  | 1.5                                  | 0.8                                 | 1.4                  |
| Jackson     | 1.7                                  | 0.8                                 | 5.3                  | 0.4                                  | 0.2                                 | 2.4                  |
| Jefferson   | 1.9                                  | 1.6                                 | 3.9                  | 0.5                                  | 0.6                                 | 2.8                  |
| Jewell      | 4.4                                  | 4.3                                 | 3.0                  | 0.1                                  | 0.2                                 | 3.1                  |
| Johnson     | 0.1                                  | 0.3                                 | 1.0                  | 0.3                                  | 0.4                                 | 0.6                  |
| Kearny      | 0.4                                  | 0.3                                 | 5.1                  | 0.7                                  | 0.3                                 | 1.8                  |
| Kingman     | 1.3                                  | 2.0                                 | 6.0                  | 0.6                                  | 0.0                                 | 3.6                  |
| Kiowa       | 1.3                                  | 0.9                                 | 3.8                  | 0.3                                  | 2.0                                 | 3.6                  |
| Labette     | 1.5                                  | 2.8                                 | 8.1                  | 0.4                                  | 0.6                                 | 4.8                  |
| Lane        | 0.5                                  | 1.3                                 | 3.8                  | 0.4                                  | 0.7                                 | 1.1                  |
| Leavenworth | 0.7                                  | 1.0                                 | 4.0                  | 0.4                                  | 0.4                                 | 2.5                  |
| Lincoln     | 5.6                                  | 6.4                                 | 3.1                  | 0.3                                  | 0.7                                 | 4.1                  |
| Linn        | 2.7                                  | 2.8                                 | 6.9                  | 0.7                                  | 0.8                                 | 4.2                  |
| Logan       | 0.2                                  | 0.2                                 | 3.4                  | 0.0                                  | 0.2                                 | 2.9                  |
| Lyon        | 0.6                                  | 1.3                                 | 6.7                  | 0.7                                  | 0.5                                 | 4.8                  |
| McPherson   | 0.8                                  | 0.5                                 | 3.8                  | 0.2                                  | 0.3                                 | 2.5                  |
| Marion      | 1.9                                  | 2.2                                 | 4.2                  | 0.5                                  | 0.9                                 | 3.0                  |
| Marshall    | 2.2                                  | 1.8                                 | 4.4                  | 0.1                                  | 0.4                                 | 2.3                  |
| Meade       | 1.0                                  | 1.3                                 | 5.9                  | 0.3                                  | 0.2                                 | 2.8                  |
| Miami       | 0.8                                  | 1.0                                 | 3.6                  | 0.9                                  | 1.1                                 | 2.2                  |
| Mitchell    | 0.4                                  | 2.7                                 | 2.0                  | 0.5                                  | 0.6                                 | 3.3                  |
| Montgomery  | 0.9                                  | 1.6                                 | 8.6                  | 0.3                                  | 0.6                                 | 6.9                  |
| Morris      | 1.1                                  | 0.8                                 | 5.1                  | 0.2                                  | 0.0                                 | 2.7                  |
| Morton      | 0.9                                  | 2.0                                 | 8.7                  | 1.2                                  | 1.0                                 | 2.1                  |
| Nemaha      | 1.5                                  | 1.2                                 | 2.6                  | 0.6                                  | 0.4                                 | 2.6                  |
| Neosho      | 0.8                                  | 0.8                                 | 7.0                  | 0.8                                  | 0.6                                 | 5.0                  |
| Ness        | 2.9                                  | 5.6                                 | 2.3                  | 0.0                                  | 0.1                                 | 2.0                  |
| Norton      | 2.2                                  | 2.9                                 | 3.9                  | 0.5                                  | 1.4                                 | 3.8                  |
| Osage       | 1.0                                  | 0.9                                 | 5.8                  | 0.5                                  | 0.5                                 | 2.7                  |
| Osborne     | 2.0                                  | 4.4                                 | 4.0                  | 0.5                                  | 0.7                                 | 3.9                  |
| Ottawa      | 1.5                                  | 0.9                                 | 6.0                  | 0.7                                  | 0.5                                 | 2.9                  |
| Pawnee      | 0.4                                  | 0.5                                 | 4.3                  | 0.4                                  | 0.7                                 | 3.3                  |

**Selected Housing Characteristics in Kansas, by County, 1990 and 2000**

| County        | 1990                                 |                                     |                      | 2000                                 |                                     |                      |
|---------------|--------------------------------------|-------------------------------------|----------------------|--------------------------------------|-------------------------------------|----------------------|
|               | Percent of Occupied Housing Units    |                                     |                      | Percent of Occupied Housing Units    |                                     |                      |
|               | Lacking Complete Plumbing Facilities | Lacking Complete Kitchen Facilities | No Telephone Service | Lacking Complete Plumbing Facilities | Lacking Complete Kitchen Facilities | No Telephone Service |
| Phillips      | 2.7                                  | 4.5                                 | 4.6                  | 0.6                                  | 0.7                                 | 2.0                  |
| Pottawatomie  | 0.4                                  | 0.8                                 | 3.4                  | 0.1                                  | 0.4                                 | 1.9                  |
| Pratt         | 0.3                                  | 0.6                                 | 3.8                  | 0.5                                  | 0.5                                 | 2.6                  |
| Rawlins       | 4.3                                  | 4.2                                 | 2.3                  | 0.5                                  | 0.5                                 | 5.2                  |
| Reno          | 0.8                                  | 1.4                                 | 6.2                  | 0.6                                  | 0.8                                 | 3.7                  |
| Republic      | 2.5                                  | 4.1                                 | 3.4                  | 0.4                                  | 0.4                                 | 4.3                  |
| Rice          | 1.6                                  | 3.2                                 | 6.1                  | 0.4                                  | 0.2                                 | 4.8                  |
| Riley         | 0.5                                  | 0.6                                 | 3.1                  | 0.3                                  | 0.2                                 | 1.5                  |
| Rooks         | 2.5                                  | 3.6                                 | 3.5                  | 0.6                                  | 0.3                                 | 3.1                  |
| Rush          | 3.0                                  | 6.2                                 | 3.7                  | 1.0                                  | 1.0                                 | 4.1                  |
| Russell       | 2.1                                  | 5.1                                 | 5.7                  | 0.7                                  | 0.6                                 | 3.0                  |
| Saline        | 0.2                                  | 0.6                                 | 4.6                  | 0.1                                  | 0.4                                 | 3.0                  |
| Scott         | 0.3                                  | 0.3                                 | 3.3                  | 0.0                                  | 0.3                                 | 3.5                  |
| Sedgwick      | 0.3                                  | 0.6                                 | 4.6                  | 0.3                                  | 0.6                                 | 2.8                  |
| Seward        | 0.1                                  | 0.4                                 | 10.6                 | 0.3                                  | 0.4                                 | 7.0                  |
| Shawnee       | 0.3                                  | 0.6                                 | 3.4                  | 0.3                                  | 0.5                                 | 2.8                  |
| Sheridan      | 1.5                                  | 2.0                                 | 3.1                  | 1.6                                  | 0.7                                 | 1.2                  |
| Sherman       | 0.0                                  | 0.8                                 | 4.4                  | 0.2                                  | 0.4                                 | 3.0                  |
| Smith         | 3.8                                  | 5.0                                 | 3.5                  | 1.1                                  | 0.5                                 | 3.1                  |
| Stafford      | 2.6                                  | 4.3                                 | 5.4                  | 0.1                                  | 0.3                                 | 4.0                  |
| Stanton       | 0.8                                  | 1.3                                 | 6.3                  | 1.3                                  | 0.7                                 | 2.8                  |
| Stevens       | 0.8                                  | 0.4                                 | 4.0                  | 0.9                                  | 0.4                                 | 0.7                  |
| Sumner        | 1.1                                  | 1.5                                 | 4.2                  | 0.4                                  | 0.6                                 | 3.2                  |
| Thomas        | 0.6                                  | 0.6                                 | 3.8                  | 0.2                                  | 0.7                                 | 1.4                  |
| Trego         | 2.6                                  | 2.7                                 | 3.5                  | 0.6                                  | 0.3                                 | 2.6                  |
| Wabaunsee     | 1.6                                  | 1.2                                 | 3.8                  | 1.2                                  | 1.1                                 | 2.0                  |
| Wallace       | 1.0                                  | 1.2                                 | 2.8                  | 0.0                                  | 0.3                                 | 2.4                  |
| Washington    | 5.1                                  | 8.0                                 | 3.2                  | 1.5                                  | 1.3                                 | 3.6                  |
| Wichita       | 2.8                                  | 2.8                                 | 2.5                  | 0.7                                  | 0.3                                 | 1.7                  |
| Wilson        | 1.9                                  | 1.9                                 | 7.8                  | 0.7                                  | 1.0                                 | 6.2                  |
| Woodson       | 2.7                                  | 2.2                                 | 5.6                  | 0.5                                  | 1.0                                 | 5.4                  |
| Wyandotte     | 0.5                                  | 1.0                                 | 5.6                  | 0.4                                  | 0.4                                 | 4.0                  |
| <b>Kansas</b> | <b>0.8</b>                           | <b>1.1</b>                          | <b>4.4</b>           | <b>0.4</b>                           | <b>0.5</b>                          | <b>2.8</b>           |

Source: U.S. Census Bureau, 1990 Census of Population and Housing, *Summary Social, Economic, and Housing Characteristics: Kansas* (CPH-5-18); Census 2000, *Profile of Selected Housing Characteristics* (DP-4).

### House Heating Fuel in Kansas, by County, 2000

| County     | Occupied Housing Units | Percent Housing Units with: |                          |             |                          |              |      |              |            |              |
|------------|------------------------|-----------------------------|--------------------------|-------------|--------------------------|--------------|------|--------------|------------|--------------|
|            |                        | Utility Gas                 | Bottled, Tank, or LP Gas | Electricity | Fuel Oil, Kerosene, etc. | Coal or Coke | Wood | Solar Energy | Other Fuel | No Fuel Used |
| Allen      | 5,775                  | 69.9                        | 10.1                     | 15.0        | 0.0                      | 0.0          | 4.1  | 0.0          | 0.7        | 0.1          |
| Anderson   | 3,221                  | 57.4                        | 25.5                     | 9.5         | 0.0                      | 0.0          | 6.9  | 0.0          | 0.7        | 0.0          |
| Atchison   | 6,275                  | 66.2                        | 16.6                     | 12.6        | 0.7                      | 0.0          | 2.5  | 0.0          | 1.2        | 0.1          |
| Barber     | 2,235                  | 76.1                        | 13.6                     | 9.0         | 0.0                      | 0.0          | 1.2  | 0.0          | 0.1        | 0.0          |
| Barton     | 11,393                 | 81.6                        | 9.1                      | 7.9         | 0.2                      | 0.0          | 0.9  | 0.0          | 0.1        | 0.1          |
| Bourbon    | 6,161                  | 61.0                        | 19.6                     | 15.2        | 0.3                      | 0.0          | 3.6  | 0.0          | 0.3        | 0.0          |
| Brown      | 4,318                  | 64.0                        | 26.2                     | 6.7         | 1.0                      | 0.0          | 1.6  | 0.0          | 0.3        | 0.3          |
| Butler     | 21,527                 | 59.2                        | 17.8                     | 20.4        | 0.1                      | 0.0          | 2.1  | 0.1          | 0.2        | 0.0          |
| Chase      | 1,246                  | 49.7                        | 38.0                     | 5.9         | 0.8                      | 0.0          | 4.3  | 0.0          | 1.1        | 0.2          |
| Chautauqua | 1,796                  | 65.7                        | 19.8                     | 5.0         | 0.0                      | 0.0          | 9.1  | 0.0          | 0.5        | 0.0          |
| Cherokee   | 8,875                  | 56.9                        | 15.4                     | 22.4        | 0.2                      | 0.0          | 4.8  | 0.0          | 0.3        | 0.1          |
| Cheyenne   | 1,360                  | 73.5                        | 19.8                     | 4.0         | 0.7                      | 0.0          | 0.9  | 0.0          | 0.8        | 0.3          |
| Clark      | 979                    | 75.0                        | 17.8                     | 6.0         | 0.0                      | 0.0          | 1.2  | 0.0          | 0.0        | 0.0          |
| Clay       | 3,617                  | 63.9                        | 20.7                     | 10.3        | 1.3                      | 0.0          | 3.3  | 0.0          | 0.5        | 0.0          |
| Cloud      | 4,163                  | 73.1                        | 14.1                     | 10.3        | 0.5                      | 0.0          | 1.8  | 0.0          | 0.2        | 0.0          |
| Coffey     | 3,489                  | 54.1                        | 29.2                     | 12.1        | 0.9                      | 0.0          | 3.4  | 0.0          | 0.3        | 0.0          |
| Comanche   | 872                    | 66.6                        | 25.3                     | 6.9         | 0.0                      | 0.0          | 0.9  | 0.0          | 0.2        | 0.0          |
| Cowley     | 14,039                 | 68.2                        | 13.5                     | 16.1        | 0.0                      | 0.0          | 1.6  | 0.1          | 0.3        | 0.2          |
| Crawford   | 15,504                 | 69.8                        | 11.8                     | 15.8        | 0.0                      | 0.0          | 2.1  | 0.0          | 0.2        | 0.2          |
| Decatur    | 1,494                  | 65.1                        | 29.9                     | 2.3         | 0.0                      | 0.0          | 1.0  | 0.0          | 0.9        | 0.8          |
| Dickinson  | 7,903                  | 67.2                        | 20.7                     | 9.7         | 0.3                      | 0.0          | 1.5  | 0.1          | 0.5        | 0.0          |
| Doniphan   | 3,173                  | 51.9                        | 31.7                     | 10.5        | 1.5                      | 0.0          | 4.0  | 0.0          | 0.2        | 0.1          |
| Douglas    | 38,486                 | 74.0                        | 6.3                      | 18.3        | 0.2                      | 0.0          | 1.0  | 0.0          | 0.2        | 0.1          |
| Edwards    | 1,455                  | 73.7                        | 17.2                     | 8.1         | 0.1                      | 0.0          | 0.7  | 0.0          | 0.2        | 0.0          |
| Elk        | 1,412                  | 64.0                        | 15.2                     | 7.6         | 0.9                      | 0.0          | 11.3 | 0.0          | 0.9        | 0.0          |
| Ellis      | 11,193                 | 71.0                        | 6.9                      | 20.6        | 0.1                      | 0.0          | 0.5  | 0.3          | 0.5        | 0.1          |
| Ellsworth  | 2,481                  | 70.7                        | 17.6                     | 7.0         | 0.4                      | 0.0          | 3.6  | 0.0          | 0.6        | 0.0          |
| Finney     | 12,948                 | 86.5                        | 4.2                      | 8.9         | 0.0                      | 0.0          | 0.1  | 0.0          | 0.2        | 0.0          |
| Ford       | 10,852                 | 81.6                        | 8.2                      | 8.7         | 0.2                      | 0.0          | 0.6  | 0.0          | 0.6        | 0.0          |
| Franklin   | 9,452                  | 62.9                        | 19.4                     | 13.6        | 0.3                      | 0.0          | 3.0  | 0.0          | 0.7        | 0.1          |
| Geary      | 10,458                 | 64.8                        | 7.2                      | 25.8        | 0.2                      | 0.0          | 1.2  | 0.0          | 0.5        | 0.4          |
| Gove       | 1,245                  | 60.9                        | 28.6                     | 7.6         | 0.6                      | 0.0          | 1.9  | 0.1          | 0.3        | 0.0          |
| Graham     | 1,263                  | 67.9                        | 24.3                     | 4.8         | 0.0                      | 0.0          | 2.7  | 0.0          | 0.3        | 0.0          |
| Grant      | 2,742                  | 85.7                        | 6.6                      | 6.2         | 0.0                      | 0.0          | 0.9  | 0.3          | 0.3        | 0.0          |
| Gray       | 2,045                  | 79.0                        | 13.6                     | 6.3         | 0.0                      | 0.0          | 0.8  | 0.0          | 0.2        | 0.0          |

### House Heating Fuel in Kansas, by County, 2000

| County      | Occupied Housing Units | Percent Housing Units with: |                          |             |                          |              |      |              |            |              |
|-------------|------------------------|-----------------------------|--------------------------|-------------|--------------------------|--------------|------|--------------|------------|--------------|
|             |                        | Utility Gas                 | Bottled, Tank, or LP Gas | Electricity | Fuel Oil, Kerosene, etc. | Coal or Coke | Wood | Solar Energy | Other Fuel | No Fuel Used |
| Greeley     | 602                    | 73.9                        | 19.3                     | 5.3         | 0.5                      | 1.0          | 0.0  | 0.0          | 0.0        | 0.0          |
| Greenwood   | 3,234                  | 53.8                        | 27.6                     | 12.3        | 0.8                      | 0.0          | 4.8  | 0.0          | 0.7        | 0.0          |
| Hamilton    | 1,054                  | 76.3                        | 16.6                     | 4.4         | 0.0                      | 0.0          | 0.3  | 0.8          | 1.5        | 0.2          |
| Harper      | 2,773                  | 72.0                        | 17.3                     | 8.0         | 0.0                      | 0.0          | 1.9  | 0.0          | 0.9        | 0.0          |
| Harvey      | 12,581                 | 65.3                        | 9.4                      | 23.1        | 0.2                      | 0.0          | 1.7  | 0.1          | 0.2        | 0.0          |
| Haskell     | 1,481                  | 86.4                        | 5.3                      | 7.0         | 0.1                      | 0.0          | 0.6  | 0.0          | 0.5        | 0.0          |
| Hodgeman    | 796                    | 52.0                        | 40.8                     | 4.8         | 0.5                      | 0.0          | 1.6  | 0.0          | 0.3        | 0.0          |
| Jackson     | 4,727                  | 35.4                        | 46.2                     | 9.5         | 0.3                      | 0.0          | 7.6  | 0.0          | 1.1        | 0.0          |
| Jefferson   | 6,830                  | 40.5                        | 41.3                     | 11.5        | 0.4                      | 0.0          | 4.9  | 0.1          | 1.2        | 0.0          |
| Jewell      | 1,695                  | 59.3                        | 32.3                     | 2.3         | 0.8                      | 0.0          | 4.2  | 0.0          | 1.1        | 0.0          |
| Johnson     | 174,570                | 80.9                        | 1.2                      | 17.7        | 0.0                      | 0.0          | 0.1  | 0.0          | 0.1        | 0.1          |
| Kearny      | 1,542                  | 88.0                        | 5.8                      | 5.1         | 0.0                      | 0.0          | 0.0  | 0.0          | 0.8        | 0.3          |
| Kingman     | 3,371                  | 55.5                        | 31.7                     | 8.7         | 0.5                      | 0.0          | 3.0  | 0.0          | 0.6        | 0.0          |
| Kiowa       | 1,365                  | 75.4                        | 14.8                     | 8.5         | 0.1                      | 0.0          | 0.7  | 0.0          | 0.3        | 0.1          |
| Labette     | 9,194                  | 68.7                        | 13.2                     | 12.3        | 0.1                      | 0.0          | 4.3  | 0.2          | 1.1        | 0.1          |
| Lane        | 910                    | 74.8                        | 17.7                     | 6.3         | 0.0                      | 0.0          | 1.0  | 0.2          | 0.0        | 0.0          |
| Leavenworth | 23,071                 | 65.4                        | 16.1                     | 16.2        | 0.2                      | 0.0          | 1.7  | 0.0          | 0.3        | 0.1          |
| Lincoln     | 1,529                  | 56.7                        | 32.2                     | 7.0         | 1.0                      | 0.0          | 2.8  | 0.0          | 0.3        | 0.0          |
| Linn        | 3,807                  | 35.3                        | 37.3                     | 18.9        | 0.2                      | 0.0          | 6.7  | 0.2          | 1.3        | 0.1          |
| Logan       | 1,243                  | 79.5                        | 14.5                     | 4.7         | 0.2                      | 0.0          | 0.5  | 0.0          | 0.6        | 0.0          |
| Lyon        | 13,691                 | 60.3                        | 12.0                     | 25.1        | 0.1                      | 0.0          | 2.1  | 0.0          | 0.4        | 0.0          |
| McPherson   | 11,205                 | 73.5                        | 13.9                     | 10.7        | 0.3                      | 0.0          | 1.2  | 0.0          | 0.2        | 0.2          |
| Marion      | 5,114                  | 65.6                        | 21.3                     | 8.2         | 0.8                      | 0.0          | 3.9  | 0.0          | 0.2        | 0.0          |
| Marshall    | 4,458                  | 65.3                        | 25.2                     | 7.8         | 0.2                      | 0.0          | 3.0  | 0.0          | 0.4        | 0.1          |
| Meade       | 1,728                  | 76.3                        | 13.8                     | 8.5         | 0.0                      | 0.0          | 0.6  | 0.0          | 0.8        | 0.0          |
| Miami       | 10,365                 | 42.1                        | 21.5                     | 32.2        | 0.2                      | 0.1          | 3.3  | 0.0          | 0.4        | 0.2          |
| Mitchell    | 2,850                  | 68.8                        | 23.2                     | 4.2         | 0.4                      | 0.0          | 2.7  | 0.0          | 0.8        | 0.0          |
| Montgomery  | 14,903                 | 75.2                        | 9.0                      | 12.8        | 0.1                      | 0.0          | 2.4  | 0.0          | 0.4        | 0.0          |
| Morris      | 2,539                  | 55.8                        | 29.0                     | 10.8        | 0.4                      | 0.0          | 3.9  | 0.0          | 0.0        | 0.0          |
| Morton      | 1,306                  | 82.9                        | 12.0                     | 4.4         | 0.0                      | 0.0          | 0.0  | 0.0          | 0.7        | 0.0          |
| Nemaha      | 3,959                  | 56.3                        | 31.3                     | 8.3         | 0.9                      | 0.0          | 2.8  | 0.0          | 0.3        | 0.0          |
| Neosho      | 6,739                  | 69.1                        | 16.0                     | 10.1        | 0.1                      | 0.0          | 3.4  | 0.0          | 0.9        | 0.3          |
| Ness        | 1,516                  | 52.8                        | 36.7                     | 6.4         | 0.9                      | 0.0          | 1.6  | 0.2          | 1.0        | 0.5          |
| Norton      | 2,266                  | 68.8                        | 23.3                     | 5.2         | 0.6                      | 0.0          | 1.5  | 0.0          | 0.5        | 0.1          |
| Osage       | 6,490                  | 54.0                        | 28.0                     | 12.4        | 0.2                      | 0.0          | 4.9  | 0.0          | 0.5        | 0.0          |

### House Heating Fuel in Kansas, by County, 2000

| County        | Occupied<br>Housing Units | Percent Housing Units with: |                             |             |                                |                 |            |                 |            |                 |
|---------------|---------------------------|-----------------------------|-----------------------------|-------------|--------------------------------|-----------------|------------|-----------------|------------|-----------------|
|               |                           | Utility Gas                 | Bottled, Tank,<br>or LP Gas | Electricity | Fuel Oil,<br>Kerosene,<br>etc. | Coal or<br>Coke | Wood       | Solar<br>Energy | Other Fuel | No Fuel<br>Used |
| Osborne       | 1,940                     | 67.2                        | 25.4                        | 4.0         | 0.1                            | 0.0             | 2.9        | 0.0             | 0.3        | 0.2             |
| Ottawa        | 2,430                     | 42.8                        | 39.5                        | 12.1        | 1.8                            | 0.0             | 3.4        | 0.0             | 0.3        | 0.0             |
| Pawnee        | 2,739                     | 69.8                        | 18.5                        | 9.5         | 0.7                            | 0.0             | 0.9        | 0.0             | 0.6        | 0.0             |
| Phillips      | 2,496                     | 72.4                        | 20.1                        | 4.0         | 0.1                            | 0.0             | 2.4        | 0.0             | 0.9        | 0.1             |
| Pottawatomie  | 6,771                     | 59.6                        | 25.6                        | 10.0        | 0.1                            | 0.0             | 4.0        | 0.0             | 0.6        | 0.0             |
| Pratt         | 3,963                     | 78.6                        | 12.5                        | 7.1         | 0.2                            | 0.0             | 0.9        | 0.0             | 0.6        | 0.0             |
| Rawlins       | 1,269                     | 63.0                        | 30.7                        | 4.0         | 0.7                            | 0.0             | 0.9        | 0.0             | 0.5        | 0.2             |
| Reno          | 25,498                    | 73.3                        | 9.4                         | 15.6        | 0.1                            | 0.0             | 1.2        | 0.0             | 0.4        | 0.1             |
| Republic      | 2,557                     | 65.4                        | 27.3                        | 4.3         | 0.5                            | 0.0             | 2.3        | 0.0             | 0.3        | 0.0             |
| Rice          | 4,050                     | 76.4                        | 14.8                        | 6.4         | 0.2                            | 0.0             | 1.6        | 0.0             | 0.6        | 0.0             |
| Riley         | 22,137                    | 56.1                        | 8.2                         | 34.2        | 0.1                            | 0.0             | 0.8        | 0.0             | 0.3        | 0.1             |
| Rooks         | 2,362                     | 74.3                        | 16.2                        | 7.1         | 0.0                            | 0.0             | 2.3        | 0.0             | 0.1        | 0.0             |
| Rush          | 1,548                     | 74.3                        | 21.1                        | 3.6         | 0.0                            | 0.0             | 1.0        | 0.0             | 0.1        | 0.0             |
| Russell       | 3,207                     | 78.1                        | 12.8                        | 7.1         | 0.1                            | 0.0             | 1.7        | 0.0             | 0.2        | 0.0             |
| Saline        | 21,436                    | 72.3                        | 8.1                         | 18.1        | 0.3                            | 0.0             | 0.8        | 0.1             | 0.2        | 0.1             |
| Scott         | 2,045                     | 85.0                        | 7.6                         | 7.3         | 0.0                            | 0.0             | 0.0        | 0.0             | 0.0        | 0.0             |
| Sedgwick      | 176,444                   | 71.2                        | 3.3                         | 25.0        | 0.1                            | 0.0             | 0.2        | 0.0             | 0.2        | 0.1             |
| Seward        | 7,419                     | 82.1                        | 5.1                         | 12.2        | 0.0                            | 0.1             | 0.1        | 0.0             | 0.3        | 0.1             |
| Shawnee       | 68,920                    | 72.3                        | 5.2                         | 21.4        | 0.1                            | 0.0             | 0.5        | 0.0             | 0.2        | 0.1             |
| Sheridan      | 1,124                     | 67.5                        | 25.4                        | 4.5         | 0.4                            | 0.0             | 1.9        | 0.0             | 0.2        | 0.0             |
| Sherman       | 2,758                     | 85.5                        | 7.8                         | 6.0         | 0.1                            | 0.0             | 0.3        | 0.0             | 0.5        | 0.0             |
| Smith         | 1,953                     | 64.2                        | 23.6                        | 8.4         | 0.1                            | 0.0             | 3.4        | 0.0             | 0.3        | 0.1             |
| Stafford      | 2,010                     | 67.6                        | 24.0                        | 5.6         | 0.7                            | 0.0             | 1.3        | 0.0             | 0.8        | 0.0             |
| Stanton       | 858                       | 87.3                        | 4.4                         | 7.0         | 0.0                            | 0.0             | 0.0        | 0.5             | 0.8        | 0.0             |
| Stevens       | 1,988                     | 88.5                        | 5.3                         | 5.8         | 0.0                            | 0.0             | 0.0        | 0.0             | 0.4        | 0.0             |
| Sumner        | 9,888                     | 64.6                        | 20.3                        | 12.6        | 0.2                            | 0.0             | 1.9        | 0.0             | 0.3        | 0.0             |
| Thomas        | 3,226                     | 81.5                        | 7.6                         | 10.0        | 0.0                            | 0.0             | 0.4        | 0.1             | 0.5        | 0.0             |
| Trego         | 1,412                     | 61.1                        | 26.0                        | 10.6        | 0.4                            | 0.0             | 1.3        | 0.0             | 0.6        | 0.0             |
| Wabaunsee     | 2,633                     | 38.2                        | 47.9                        | 7.8         | 0.5                            | 0.0             | 5.2        | 0.0             | 0.4        | 0.0             |
| Wallace       | 674                       | 65.9                        | 29.5                        | 2.7         | 0.0                            | 0.0             | 0.3        | 0.0             | 1.6        | 0.0             |
| Washington    | 2,673                     | 63.9                        | 25.5                        | 3.9         | 0.4                            | 0.1             | 5.8        | 0.1             | 0.2        | 0.1             |
| Wichita       | 967                       | 77.2                        | 12.7                        | 9.0         | 0.0                            | 0.0             | 1.0        | 0.0             | 0.0        | 0.0             |
| Wilson        | 4,203                     | 64.2                        | 20.1                        | 9.4         | 0.2                            | 0.0             | 5.5        | 0.0             | 0.5        | 0.0             |
| Woodson       | 1,642                     | 51.9                        | 29.2                        | 10.9        | 0.6                            | 0.0             | 7.3        | 0.0             | 0.1        | 0.0             |
| Wyandotte     | 59,700                    | 85.3                        | 1.3                         | 12.8        | 0.0                            | 0.0             | 0.3        | 0.0             | 0.2        | 0.2             |
| <b>Kansas</b> | <b>1,037,891</b>          | <b>71.5</b>                 | <b>9.5</b>                  | <b>17.2</b> | <b>0.2</b>                     | <b>0.0</b>      | <b>1.2</b> | <b>0.0</b>      | <b>0.3</b> | <b>0.1</b>      |

Source: U.S. Census Bureau, Census 2000, *Profile of Selected Housing Characteristics* (DP-4).

**Specified Owner-Occupied Housing Units and Median Value in Kansas  
by County, 1990 and 2000**

| County      | 1990        |              | 2000        |              |
|-------------|-------------|--------------|-------------|--------------|
|             | Total Units | Median Value | Total Units | Median Value |
| Allen       | 3,002       | \$27,600     | 3,055       | \$40,900     |
| Anderson    | 1,396       | 27,200       | 1,582       | 49,300       |
| Atchison    | 3,243       | 32,400       | 3,557       | 56,500       |
| Barber      | 1,308       | 28,400       | 1,327       | 33,000       |
| Barton      | 6,540       | 37,700       | 6,894       | 55,500       |
| Bourbon     | 2,917       | 29,800       | 3,121       | 46,200       |
| Brown       | 2,187       | 28,000       | 2,304       | 50,800       |
| Butler      | 9,750       | 51,800       | 12,014      | 83,900       |
| Chase       | 532         | 22,400       | 576         | 39,800       |
| Chautauqua  | 857         | 18,900       | 820         | 26,200       |
| Cherokee    | 4,278       | 27,000       | 4,420       | 46,900       |
| Cheyenne    | 679         | 31,900       | 762         | 48,500       |
| Clark       | 541         | 29,500       | 581         | 42,600       |
| Clay        | 1,959       | 33,800       | 2,127       | 52,900       |
| Cloud       | 2,468       | 25,600       | 2,571       | 42,400       |
| Coffey      | 1,466       | 34,800       | 1,750       | 60,700       |
| Comanche    | 502         | 24,300       | 471         | 29,700       |
| Cowley      | 7,299       | 37,500       | 7,524       | 54,100       |
| Crawford    | 7,764       | 30,700       | 7,648       | 54,000       |
| Decatur     | 844         | 28,800       | 857         | 43,600       |
| Dickinson   | 3,983       | 35,600       | 4,548       | 62,800       |
| Doniphan    | 1,434       | 29,200       | 1,482       | 54,700       |
| Douglas     | 11,821      | 68,000       | 15,761      | 117,800      |
| Edwards     | 897         | 24,900       | 847         | 36,300       |
| Elk         | 677         | 15,000       | 681         | 24,700       |
| Ellis       | 5,338       | 49,600       | 5,961       | 85,500       |
| Ellsworth   | 1,458       | 28,300       | 1,533       | 43,400       |
| Finney      | 4,994       | 50,800       | 6,205       | 83,800       |
| Ford        | 4,876       | 48,900       | 5,495       | 69,200       |
| Franklin    | 3,778       | 37,700       | 4,436       | 73,800       |
| Geary       | 3,744       | 55,400       | 3,944       | 69,400       |
| Gove        | 661         | 30,300       | 647         | 48,100       |
| Graham      | 767         | 24,900       | 726         | 41,300       |
| Grant       | 1,101       | 53,200       | 1,411       | 78,600       |
| Gray        | 892         | 45,500       | 1,058       | 76,000       |
| Greeley     | 272         | 39,500       | 292         | 57,700       |
| Greenwood   | 1,517       | 21,900       | 1,577       | 35,300       |
| Hamilton    | 487         | 37,800       | 521         | 59,400       |
| Harper      | 1,588       | 32,300       | 1,603       | 44,100       |
| Harvey      | 6,163       | 47,100       | 7,279       | 76,400       |
| Haskell     | 622         | 45,900       | 713         | 76,100       |
| Hodgeman    | 397         | 26,800       | 406         | 45,000       |
| Jackson     | 1,720       | 34,300       | 2,022       | 70,200       |
| Jefferson   | 2,651       | 47,100       | 3,464       | 83,100       |
| Jewell      | 856         | 14,999       | 880         | 24,000       |
| Johnson     | 86,592      | 91,500       | 117,667     | 150,100      |
| Kearny      | 577         | 45,900       | 697         | 77,500       |
| Kingman     | 1,589       | 34,600       | 1,735       | 56,800       |
| Kiowa       | 785         | 33,600       | 716         | 44,200       |
| Labette     | 4,878       | 29,000       | 4,913       | 39,600       |
| Lane        | 496         | 32,600       | 516         | 48,500       |
| Leavenworth | 9,576       | 64,000       | 11,984      | 96,900       |
| Lincoln     | 748         | 17,200       | 820         | 33,900       |
| Linn        | 1,219       | 26,800       | 1,504       | 56,100       |

**Specified Owner-Occupied Housing Units and Median Value in Kansas  
by County, 1990 and 2000**

| County        | 1990           |                 | 2000           |                 |
|---------------|----------------|-----------------|----------------|-----------------|
|               | Total Units    | Median Value    | Total Units    | Median Value    |
| Logan         | 705            | \$30,800        | 782            | \$55,000        |
| Lyon          | 5,599          | 45,800          | 5,983          | 67,900          |
| McPherson     | 5,600          | 47,900          | 6,439          | 82,700          |
| Marion        | 2,559          | 30,700          | 2,770          | 52,300          |
| Marshall      | 2,469          | 26,300          | 2,572          | 46,200          |
| Meade         | 912            | 35,900          | 965            | 52,900          |
| Miami         | 3,693          | 47,700          | 4,945          | 106,300         |
| Mitchell      | 1,637          | 28,800          | 1,646          | 55,600          |
| Montgomery    | 8,493          | 29,400          | 8,135          | 44,400          |
| Morris        | 1,161          | 33,500          | 1,310          | 48,400          |
| Morton        | 642            | 44,700          | 662            | 67,700          |
| Nemaha        | 1,976          | 35,400          | 2,232          | 58,200          |
| Neosho        | 3,544          | 28,600          | 3,634          | 44,900          |
| Ness          | 921            | 29,900          | 860            | 40,600          |
| Norton        | 1,276          | 25,700          | 1,407          | 46,800          |
| Osage         | 2,741          | 38,300          | 3,200          | 67,600          |
| Osborne       | 1,140          | 18,400          | 1,116          | 32,000          |
| Ottawa        | 1,250          | 27,500          | 1,338          | 58,900          |
| Pawnee        | 1,577          | 35,300          | 1,680          | 48,800          |
| Phillips      | 1,400          | 26,800          | 1,436          | 48,200          |
| Pottawatomie  | 2,893          | 46,400          | 3,582          | 81,100          |
| Pratt         | 2,171          | 37,500          | 2,293          | 56,600          |
| Rawlins       | 633            | 27,500          | 674            | 41,300          |
| Reno          | 13,559         | 40,100          | 14,918         | 66,600          |
| Republic      | 1,481          | 18,900          | 1,442          | 35,300          |
| Rice          | 2,380          | 27,200          | 2,550          | 42,900          |
| Riley         | 7,021          | 63,500          | 8,466          | 93,700          |
| Rooks         | 1,492          | 25,800          | 1,414          | 38,300          |
| Rush          | 968            | 19,200          | 1,034          | 32,200          |
| Russell       | 2,032          | 28,000          | 1,913          | 41,100          |
| Saline        | 11,056         | 45,500          | 12,517         | 85,300          |
| Scott         | 1,104          | 44,000          | 1,214          | 72,100          |
| Sedgwick      | 84,206         | 58,500          | 101,543        | 83,600          |
| Seward        | 3,275          | 48,800          | 3,519          | 72,400          |
| Shawnee       | 35,501         | 55,700          | 39,799         | 81,600          |
| Sheridan      | 575            | 27,600          | 611            | 56,000          |
| Sherman       | 1,390          | 37,900          | 1,418          | 63,900          |
| Smith         | 1,168          | 20,700          | 1,063          | 37,400          |
| Stafford      | 1,143          | 24,000          | 1,164          | 34,400          |
| Stanton       | 315            | 44,500          | 349            | 73,400          |
| Stevens       | 881            | 48,800          | 999            | 79,000          |
| Sumner        | 5,220          | 39,300          | 5,491          | 62,100          |
| Thomas        | 1,613          | 45,400          | 1,739          | 75,500          |
| Trego         | 781            | 27,900          | 890            | 47,400          |
| Wabaunsee     | 1,140          | 34,600          | 1,320          | 62,600          |
| Wallace       | 328            | 28,400          | 348            | 45,700          |
| Washington    | 1,390          | 18,500          | 1,453          | 32,200          |
| Wichita       | 436            | 37,900          | 512            | 55,300          |
| Wilson        | 2,109          | 23,500          | 2,182          | 37,700          |
| Woodson       | 738            | 18,800          | 771            | 34,300          |
| Wyandotte     | 33,648         | 42,300          | 33,655         | 54,300          |
| <b>Kansas</b> | <b>500,628</b> | <b>\$52,200</b> | <b>581,960</b> | <b>\$83,500</b> |

Source: U.S. Census Bureau, 1990 Census of Population and Housing, *General Population Characteristics: Kansas* (CP-1-18); Census 2000, *Profile of Selected Housing Characteristics* (DP-4).

**Specified Renter-Occupied Housing Units and Median Gross Rent in Kansas  
by County, 1990 and 2000**

| County      | 1990        |             | 2000        |             |
|-------------|-------------|-------------|-------------|-------------|
|             | Total Units | Median Rent | Total Units | Median Rent |
| Allen       | 1,175       | \$174       | 1,407       | \$365       |
| Anderson    | 492         | 159         | 573         | 365         |
| Atchison    | 1,393       | 184         | 1,567       | 378         |
| Barber      | 411         | 193         | 464         | 354         |
| Barton      | 2,845       | 211         | 3,114       | 390         |
| Bourbon     | 1,261       | 179         | 1,479       | 356         |
| Brown       | 958         | 159         | 1,123       | 342         |
| Butler      | 3,815       | 243         | 4,517       | 485         |
| Chase       | 168         | 151         | 281         | 349         |
| Chautauqua  | 222         | 141         | 252         | 365         |
| Cherokee    | 1,570       | 166         | 1,995       | 381         |
| Cheyenne    | 201         | 144         | 244         | 314         |
| Clark       | 157         | 189         | 202         | 386         |
| Clay        | 718         | 169         | 733         | 333         |
| Cloud       | 997         | 152         | 983         | 312         |
| Coffey      | 556         | 194         | 683         | 394         |
| Comanche    | 155         | 153         | 193         | 294         |
| Cowley      | 3,507       | 213         | 3,925       | 417         |
| Crawford    | 4,239       | 207         | 5,383       | 451         |
| Decatur     | 290         | 166         | 315         | 353         |
| Dickinson   | 1,618       | 190         | 1,833       | 377         |
| Doniphan    | 529         | 164         | 726         | 379         |
| Douglas     | 13,748      | 343         | 18,344      | 560         |
| Edwards     | 271         | 160         | 291         | 350         |
| Elk         | 185         | 111         | 222         | 301         |
| Ellis       | 3,350       | 227         | 4,034       | 431         |
| Ellsworth   | 424         | 166         | 457         | 336         |
| Finney      | 3,846       | 300         | 4,483       | 491         |
| Ford        | 3,153       | 263         | 3,764       | 450         |
| Franklin    | 1,905       | 216         | 2,329       | 465         |
| Geary       | 4,921       | 283         | 5,120       | 461         |
| Gove        | 149         | 148         | 212         | 330         |
| Graham      | 247         | 145         | 217         | 320         |
| Grant       | 594         | 263         | 667         | 436         |
| Gray        | 354         | 204         | 525         | 418         |
| Greeley     | 98          | 206         | 128         | 383         |
| Greenwood   | 591         | 156         | 717         | 322         |
| Hamilton    | 214         | 197         | 299         | 373         |
| Harper      | 605         | 183         | 631         | 356         |
| Harvey      | 3,251       | 231         | 3,454       | 448         |
| Haskell     | 247         | 229         | 398         | 446         |
| Hodgeman    | 82          | 158         | 135         | 360         |
| Jackson     | 576         | 183         | 834         | 453         |
| Jefferson   | 652         | 223         | 867         | 447         |
| Jewell      | 216         | 116         | 267         | 266         |
| Johnson     | 40,520      | 438         | 48,068      | 702         |
| Kearny      | 307         | 254         | 375         | 465         |
| Kingman     | 521         | 199         | 602         | 397         |
| Kiowa       | 302         | 173         | 358         | 336         |
| Labette     | 2,106       | 187         | 2,332       | 375         |
| Lane        | 155         | 169         | 189         | 365         |
| Leavenworth | 5,718       | 342         | 7,416       | 551         |
| Lincoln     | 168         | 112         | 239         | 296         |
| Linn        | 417         | 151         | 568         | 412         |

**Specified Renter-Occupied Housing Units and Median Gross Rent in Kansas  
by County, 1990 and 2000**

| County        | 1990           |              | 2000           |              |
|---------------|----------------|--------------|----------------|--------------|
|               | Total Units    | Median Rent  | Total Units    | Median Rent  |
| Logan         | 185            | \$157        | 252            | \$360        |
| Lyon          | 4,649          | 234          | 5,205          | 420          |
| McPherson     | 2,383          | 224          | 2,817          | 416          |
| Marion        | 775            | 176          | 933            | 374          |
| Marshall      | 720            | 156          | 825            | 324          |
| Meade         | 323            | 192          | 395            | 395          |
| Miami         | 1,543          | 235          | 1,947          | 499          |
| Mitchell      | 585            | 174          | 694            | 346          |
| Montgomery    | 3,758          | 192          | 4,048          | 401          |
| Morris        | 438            | 176          | 491            | 368          |
| Morton        | 260            | 218          | 342            | 413          |
| Nemaha        | 527            | 163          | 640            | 321          |
| Neosho        | 1,414          | 180          | 1,621          | 375          |
| Ness          | 214            | 163          | 315            | 340          |
| Norton        | 450            | 163          | 475            | 329          |
| Osage         | 952            | 189          | 1,218          | 398          |
| Osborne       | 299            | 138          | 364            | 314          |
| Ottawa        | 329            | 162          | 392            | 372          |
| Pawnee        | 674            | 197          | 655            | 332          |
| Phillips      | 459            | 155          | 489            | 296          |
| Pottawatomie  | 1,055          | 219          | 1,333          | 464          |
| Pratt         | 845            | 222          | 1,004          | 389          |
| Rawlins       | 179            | 168          | 249            | 328          |
| Reno          | 6,538          | 233          | 7,295          | 442          |
| Republic      | 381            | 135          | 469            | 288          |
| Rice          | 833            | 165          | 893            | 340          |
| Riley         | 10,072         | 323          | 11,573         | 475          |
| Rooks         | 399            | 153          | 502            | 325          |
| Rush          | 204            | 143          | 253            | 328          |
| Russell       | 636            | 169          | 740            | 325          |
| Saline        | 6,202          | 249          | 6,557          | 457          |
| Scott         | 364            | 225          | 496            | 402          |
| Sedgwick      | 54,219         | 302          | 59,432         | 511          |
| Seward        | 2,143          | 285          | 2,643          | 467          |
| Shawnee       | 20,293         | 307          | 22,202         | 494          |
| Sheridan      | 126            | 147          | 166            | 286          |
| Sherman       | 666            | 197          | 840            | 414          |
| Smith         | 291            | 125          | 348            | 283          |
| Stafford      | 332            | 160          | 404            | 353          |
| Stanton       | 172            | 207          | 248            | 406          |
| Stevens       | 349            | 233          | 483            | 450          |
| Sumner        | 1,827          | 201          | 2,133          | 416          |
| Thomas        | 839            | 205          | 953            | 373          |
| Trego         | 211            | 153          | 228            | 326          |
| Wabaunsee     | 273            | 168          | 343            | 378          |
| Wallace       | 92             | 157          | 136            | 361          |
| Washington    | 355            | 124          | 448            | 286          |
| Wichita       | 185            | 183          | 224            | 451          |
| Wilson        | 721            | 160          | 855            | 382          |
| Woodson       | 276            | 142          | 276            | 321          |
| Wyandotte     | 21,576         | 285          | 22,045         | 492          |
| <b>Kansas</b> | <b>270,761</b> | <b>\$285</b> | <b>310,423</b> | <b>\$498</b> |

Source: U.S. Census Bureau, 1990 Census of Population and Housing, *Population and Housing Unit Counts: Kansas* (CPH-1-18); Census 2000, *Profile of Selected Housing Characteristics: Kansas* (DP-4).

Median gross rent is the monthly rent agreed or contracted for plus the estimated monthly cost of utilities and fuels.

**Fair Market Rents in Kansas, by County, 2009**

| <b>County</b> | <b>Studio</b> | <b>One Bedroom</b> | <b>Two Bedrooms</b> | <b>Three Bedrooms</b> | <b>Four Bedrooms</b> |
|---------------|---------------|--------------------|---------------------|-----------------------|----------------------|
| Allen         | \$412         | \$417              | \$547               | \$725                 | \$789                |
| Anderson      | 395           | 440                | 547                 | 705                   | 767                  |
| Atchison      | 430           | 479                | 587                 | 855                   | 1,031                |
| Barber        | 356           | 419                | 547                 | 712                   | 840                  |
| Barton        | 355           | 428                | 547                 | 727                   | 941                  |
| Bourbon       | 397           | 422                | 547                 | 790                   | 891                  |
| Brown         | 430           | 479                | 587                 | 855                   | 1,031                |
| Butler        | 430           | 481                | 632                 | 808                   | 909                  |
| Chase         | 382           | 417                | 547                 | 696                   | 718                  |
| Chautauqua    | 395           | 440                | 547                 | 705                   | 767                  |
| Cherokee      | 456           | 473                | 547                 | 766                   | 940                  |
| Cheyenne      | 410           | 416                | 547                 | 700                   | 720                  |
| Clark         | 474           | 478                | 582                 | 708                   | 777                  |
| Clay          | 425           | 466                | 573                 | 735                   | 905                  |
| Cloud         | 424           | 432                | 547                 | 718                   | 742                  |
| Coffey        | 382           | 417                | 547                 | 696                   | 718                  |
| Comanche      | 356           | 419                | 547                 | 712                   | 840                  |
| Cowley        | 365           | 447                | 547                 | 693                   | 713                  |
| Crawford      | 388           | 454                | 598                 | 806                   | 898                  |
| Decatur       | 410           | 416                | 547                 | 700                   | 720                  |
| Dickinson     | 356           | 415                | 547                 | 659                   | 812                  |
| Doniphan      | 370           | 457                | 569                 | 716                   | 850                  |
| Douglas       | 539           | 554                | 712                 | 1,040                 | 1,250                |
| Edwards       | 356           | 419                | 547                 | 712                   | 840                  |
| Elk           | 395           | 440                | 547                 | 705                   | 767                  |
| Ellis         | 393           | 445                | 585                 | 809                   | 847                  |
| Ellsworth     | 424           | 432                | 547                 | 718                   | 742                  |
| Finney        | 481           | 482                | 622                 | 755                   | 957                  |
| Ford          | 501           | 502                | 604                 | 744                   | 794                  |
| Franklin      | 508           | 509                | 631                 | 804                   | 859                  |
| Geary         | 389           | 461                | 566                 | 750                   | 838                  |
| Gove          | 410           | 416                | 547                 | 700                   | 720                  |
| Graham        | 410           | 416                | 547                 | 700                   | 720                  |
| Grant         | 474           | 478                | 582                 | 708                   | 777                  |
| Gray          | 474           | 478                | 582                 | 708                   | 777                  |
| Greeley       | 474           | 478                | 582                 | 708                   | 777                  |
| Greenwood     | 382           | 417                | 547                 | 696                   | 718                  |
| Hamilton      | 474           | 478                | 582                 | 708                   | 777                  |
| Harper        | 356           | 419                | 547                 | 712                   | 840                  |
| Harvey        | 430           | 481                | 632                 | 808                   | 909                  |
| Haskell       | 474           | 478                | 582                 | 708                   | 777                  |
| Hodgeman      | 474           | 478                | 582                 | 708                   | 777                  |
| Jackson       | 473           | 515                | 630                 | 799                   | 840                  |
| Jefferson     | 473           | 515                | 630                 | 799                   | 840                  |
| Jewell        | 424           | 432                | 547                 | 718                   | 742                  |
| Johnson       | 573           | 689                | 791                 | 1,070                 | 1,126                |
| Kearny        | 474           | 478                | 582                 | 708                   | 777                  |
| Kingman       | 356           | 419                | 547                 | 712                   | 840                  |
| Kiowa         | 356           | 419                | 547                 | 712                   | 840                  |
| Labette       | 356           | 426                | 547                 | 741                   | 763                  |
| Lane          | 474           | 478                | 582                 | 708                   | 777                  |
| Leavenworth   | 573           | 689                | 791                 | 1,070                 | 1,126                |
| Lincoln       | 424           | 432                | 547                 | 718                   | 742                  |
| Linn          | 573           | 689                | 791                 | 1,070                 | 1,126                |
| Logan         | 410           | 416                | 547                 | 700                   | 720                  |
| Lyon          | 356           | 416                | 547                 | 731                   | 865                  |

### Fair Market Rents in Kansas, by County, 2009

| County        | Studio       | One Bedroom  | Two Bedrooms | Three Bedrooms | Four Bedrooms |
|---------------|--------------|--------------|--------------|----------------|---------------|
| McPherson     | \$455        | \$456        | \$547        | \$716          | \$736         |
| Marion        | 382          | 417          | 547          | 696            | 718           |
| Marshall      | 425          | 466          | 573          | 735            | 905           |
| Meade         | 474          | 478          | 582          | 708            | 777           |
| Miami         | 573          | 689          | 791          | 1,070          | 1,126         |
| Mitchell      | 424          | 432          | 547          | 718            | 742           |
| Montgomery    | 392          | 438          | 547          | 673            | 837           |
| Morris        | 425          | 466          | 573          | 735            | 905           |
| Morton        | 474          | 478          | 582          | 708            | 777           |
| Nemaha        | 430          | 479          | 587          | 855            | 1,031         |
| Neosho        | 354          | 426          | 547          | 651            | 957           |
| Ness          | 474          | 478          | 582          | 708            | 777           |
| Norton        | 410          | 416          | 547          | 700            | 720           |
| Osage         | 473          | 515          | 630          | 799            | 840           |
| Osborne       | 410          | 416          | 547          | 700            | 720           |
| Ottawa        | 424          | 432          | 547          | 718            | 742           |
| Pawnee        | 356          | 419          | 547          | 712            | 840           |
| Phillips      | 410          | 416          | 547          | 700            | 720           |
| Pottawatomie  | 370          | 513          | 569          | 724            | 835           |
| Pratt         | 356          | 417          | 547          | 709            | 836           |
| Rawlins       | 410          | 416          | 547          | 700            | 720           |
| Reno          | 390          | 434          | 569          | 780            | 802           |
| Republic      | 424          | 432          | 547          | 718            | 742           |
| Rice          | 396          | 432          | 547          | 725            | 748           |
| Riley         | 447          | 483          | 599          | 872            | 1,051         |
| Rooks         | 410          | 416          | 547          | 700            | 720           |
| Rush          | 356          | 419          | 547          | 712            | 840           |
| Russell       | 410          | 416          | 547          | 700            | 720           |
| Saline        | 453          | 454          | 598          | 797            | 820           |
| Scott         | 474          | 478          | 582          | 708            | 777           |
| Sedgwick      | 430          | 481          | 632          | 808            | 909           |
| Seward        | 410          | 504          | 583          | 716            | 868           |
| Shawnee       | 473          | 515          | 630          | 799            | 840           |
| Sheridan      | 410          | 416          | 547          | 700            | 720           |
| Sherman       | 403          | 416          | 547          | 686            | 708           |
| Smith         | 410          | 416          | 547          | 700            | 720           |
| Stafford      | 356          | 419          | 547          | 712            | 840           |
| Stanton       | 474          | 478          | 582          | 708            | 777           |
| Stevens       | 474          | 478          | 582          | 708            | 777           |
| Sumner        | 354          | 416          | 547          | 736            | 857           |
| Thomas        | 407          | 415          | 547          | 695            | 716           |
| Trego         | 410          | 416          | 547          | 700            | 720           |
| Wabaunsee     | 473          | 515          | 630          | 799            | 840           |
| Wallace       | 410          | 416          | 547          | 700            | 720           |
| Washington    | 424          | 432          | 547          | 718            | 742           |
| Wichita       | 474          | 478          | 582          | 708            | 777           |
| Wilson        | 395          | 439          | 547          | 703            | 765           |
| Woodson       | 395          | 440          | 547          | 705            | 767           |
| Wyandotte     | 573          | 689          | 791          | 1,070          | 1,126         |
| <b>Kansas</b> | <b>\$469</b> | <b>\$529</b> | <b>\$653</b> | <b>\$866</b>   | <b>\$955</b>  |

Source: U.S. Department of Housing and Urban Development, *2009 Fair Market Rents*, <http://www.huduser.org/datasets/fmr.html> (accessed December 10, 2008); National Low Income Housing Coalition, *Out of Reach 2009*, <http://www.nlihc.org/oor/oor2009/> (accessed June 5, 2009).

Fair market rent is the amount that would be needed to pay the gross rent (shelter rent plus utilities) of privately owned, decent, and safe rental housing of a modest (non-luxury) nature with suitable amenities.

**Mean Renter Wage, Housing Wage, and Work Hours Needed  
to Afford Fair Market Rent in Kansas, by County  
2009**

| County     | Mean Renter Wage | Housing Wage |             |              |                |               | Number of Work Hours Needed per Week at Mean Renter Wage to Afford Fair Market Rent |             |              |                |               |
|------------|------------------|--------------|-------------|--------------|----------------|---------------|---|-------------|--------------|----------------|---------------|
|            |                  | Studio       | One Bedroom | Two Bedrooms | Three Bedrooms | Four Bedrooms | Studio  | One Bedroom | Two Bedrooms | Three Bedrooms | Four Bedrooms |
| Allen      | \$8.50           | \$7.92       | \$8.02      | \$10.52      | \$13.94        | \$15.17       | 37  | 38          | 50           | 66             | 71            |
| Anderson   | 8.35             | 7.60         | 8.46        | 10.52        | 13.56          | 14.75         | 36  | 41          | 50           | 65             | 71            |
| Atchison   | 9.73             | 8.27         | 9.21        | 11.29        | 16.44          | 19.83         | 34  | 38          | 46           | 68             | 82            |
| Barber     | 11.83            | 6.85         | 8.06        | 10.52        | 13.69          | 16.15         | 23  | 27          | 36           | 46             | 55            |
| Barton     | 10.37            | 6.83         | 8.23        | 10.52        | 13.98          | 18.10         | 26  | 32          | 41           | 54             | 70            |
| Bourbon    | 8.51             | 7.63         | 8.12        | 10.52        | 15.19          | 17.13         | 36  | 38          | 49           | 71             | 81            |
| Brown      | 10.20            | 8.27         | 9.21        | 11.29        | 16.44          | 19.83         | 32  | 36          | 44           | 64             | 78            |
| Butler     | 8.82             | 8.27         | 9.25        | 12.15        | 15.54          | 17.48         | 38  | 42          | 55           | 70             | 79            |
| Chase      | 8.61             | 7.35         | 8.02        | 10.52        | 13.38          | 13.81         | 34  | 37          | 49           | 62             | 64            |
| Chautauqua | 8.35             | 7.60         | 8.46        | 10.52        | 13.56          | 14.75         | 36  | 41          | 50           | 65             | 71            |
| Cherokee   | 10.03            | 8.77         | 9.10        | 10.52        | 14.73          | 18.08         | 35  | 36          | 42           | 59             | 72            |
| Cheyenne   | 11.76            | 7.88         | 8.00        | 10.52        | 13.46          | 13.85         | 27  | 27          | 36           | 46             | 47            |
| Clark      | 10.82            | 9.12         | 9.19        | 11.19        | 13.62          | 14.94         | 34  | 34          | 41           | 50             | 55            |
| Clay       | 7.03             | 8.17         | 8.96        | 11.02        | 14.13          | 17.40         | 47  | 51          | 63           | 80             | 99            |
| Cloud      | 7.01             | 8.15         | 8.31        | 10.52        | 13.81          | 14.27         | 47  | 47          | 60           | 79             | 81            |
| Coffey     | 15.46            | 7.35         | 8.02        | 10.52        | 13.38          | 13.81         | 19  | 21          | 27           | 35             | 36            |
| Comanche   | 6.79             | 6.85         | 8.06        | 10.52        | 13.69          | 16.15         | 40  | 47          | 62           | 81             | 95            |
| Cowley     | 9.94             | 7.02         | 8.60        | 10.52        | 13.33          | 13.71         | 28  | 35          | 42           | 54             | 55            |
| Crawford   | 8.54             | 7.46         | 8.73        | 11.50        | 15.50          | 17.27         | 35  | 41          | 54           | 73             | 81            |
| Decatur    | 8.79             | 7.88         | 8.00        | 10.52        | 13.46          | 13.85         | 36  | 36          | 48           | 61             | 63            |
| Dickinson  | 8.38             | 6.85         | 7.98        | 10.52        | 12.67          | 15.62         | 33  | 38          | 50           | 60             | 75            |
| Doniphan   | 12.67            | 7.12         | 8.79        | 10.94        | 13.77          | 16.35         | 22  | 28          | 35           | 43             | 52            |
| Douglas    | 8.37             | 10.37        | 10.65       | 13.69        | 20.00          | 24.04         | 50  | 51          | 65           | 96             | 115           |
| Edwards    | 10.05            | 6.85         | 8.06        | 10.52        | 13.69          | 16.15         | 27  | 32          | 42           | 54             | 64            |
| Elk        | 5.83             | 7.60         | 8.46        | 10.52        | 13.56          | 14.75         | 52  | 58          | 72           | 93             | 101           |
| Ellis      | 8.56             | 7.56         | 8.56        | 11.25        | 15.56          | 16.29         | 35  | 40          | 53           | 73             | 76            |
| Ellsworth  | 9.50             | 8.15         | 8.31        | 10.52        | 13.81          | 14.27         | 34  | 35          | 44           | 58             | 60            |
| Finney     | 10.04            | 9.25         | 9.27        | 11.96        | 14.52          | 18.40         | 37  | 37          | 48           | 58             | 73            |
| Ford       | 10.58            | 9.63         | 9.65        | 11.62        | 14.31          | 15.27         | 36  | 36          | 44           | 54             | 58            |
| Franklin   | 9.70             | 9.77         | 9.79        | 12.13        | 15.46          | 16.52         | 40  | 40          | 50           | 64             | 68            |
| Geary      | 10.27            | 7.48         | 8.87        | 10.88        | 14.42          | 16.12         | 29  | 35          | 42           | 56             | 63            |
| Gove       | 9.78             | 7.88         | 8.00        | 10.52        | 13.46          | 13.85         | 32  | 33          | 43           | 55             | 57            |
| Graham     | 10.24            | 7.88         | 8.00        | 10.52        | 13.46          | 13.85         | 31  | 31          | 41           | 53             | 54            |
| Grant      | 12.60            | 9.12         | 9.19        | 11.19        | 13.62          | 14.94         | 29  | 29          | 36           | 43             | 47            |
| Gray       | 11.91            | 9.12         | 9.19        | 11.19        | 13.62          | 14.94         | 31  | 31          | 38           | 46             | 50            |
| Greeley    | 10.68            | 9.12         | 9.19        | 11.19        | 13.62          | 14.94         | 34  | 34          | 42           | 51             | 56            |

**Mean Renter Wage, Housing Wage, and Work Hours Needed  
to Afford Fair Market Rent in Kansas, by County  
2009**

| County      | Mean Renter Wage | Housing Wage |             |              |                |               | Number of Work Hours Needed per Week at Mean Renter Wage to Afford Fair Market Rent |             |              |                |               |
|-------------|------------------|--------------|-------------|--------------|----------------|---------------|---|-------------|--------------|----------------|---------------|
|             |                  | Studio       | One Bedroom | Two Bedrooms | Three Bedrooms | Four Bedrooms | Studio  | One Bedroom | Two Bedrooms | Three Bedrooms | Four Bedrooms |
| Greenwood   | 8.39             | 7.35         | 8.02        | 10.52        | 13.38          | 13.81         | 35  | 38          | 50           | 64             | 66            |
| Hamilton    | 10.03            | 9.12         | 9.19        | 11.19        | 13.62          | 14.94         | 36  | 37          | 45           | 54             | 60            |
| Harper      | 10.75            | 6.85         | 8.06        | 10.52        | 13.69          | 16.15         | 25  | 30          | 39           | 51             | 60            |
| Harvey      | \$9.29           | \$8.27       | \$9.25      | \$12.15      | \$15.54        | \$17.48       | 36  | 40          | 52           | 67             | 75            |
| Haskell     | 12.04            | 9.12         | 9.19        | 11.19        | 13.62          | 14.94         | 30  | 31          | 37           | 45             | 50            |
| Hodgeman    | 10.91            | 9.12         | 9.19        | 11.19        | 13.62          | 14.94         | 33  | 34          | 41           | 50             | 55            |
| Jackson     | 9.15             | 9.10         | 9.90        | 12.12        | 15.37          | 16.15         | 40  | 43          | 53           | 67             | 71            |
| Jefferson   | 10.55            | 9.10         | 9.90        | 12.12        | 15.37          | 16.15         | 34  | 38          | 46           | 58             | 61            |
| Jewell      | 8.43             | 8.15         | 8.31        | 10.52        | 13.81          | 14.27         | 39  | 39          | 50           | 66             | 68            |
| Johnson     | 14.53            | 11.02        | 13.25       | 15.21        | 20.58          | 21.65         | 30  | 36          | 42           | 57             | 60            |
| Kearny      | 11.62            | 9.12         | 9.19        | 11.19        | 13.62          | 14.94         | 31  | 32          | 39           | 47             | 51            |
| Kingman     | 10.61            | 6.85         | 8.06        | 10.52        | 13.69          | 16.15         | 26  | 30          | 40           | 52             | 61            |
| Kiowa       | 9.98             | 6.85         | 8.06        | 10.52        | 13.69          | 16.15         | 27  | 32          | 42           | 55             | 65            |
| Labette     | 8.49             | 6.85         | 8.19        | 10.52        | 14.25          | 14.67         | 32  | 39          | 50           | 67             | 69            |
| Lane        | 11.88            | 9.12         | 9.19        | 11.19        | 13.62          | 14.94         | 31  | 31          | 38           | 46             | 50            |
| Leavenworth | 11.61            | 11.02        | 13.25       | 15.21        | 20.58          | 21.65         | 38  | 46          | 52           | 71             | 75            |
| Lincoln     | 6.89             | 8.15         | 8.31        | 10.52        | 13.81          | 14.27         | 47  | 48          | 61           | 80             | 83            |
| Linn        | 10.87            | 11.02        | 13.25       | 15.21        | 20.58          | 21.65         | 41  | 49          | 56           | 76             | 80            |
| Logan       | 10.94            | 7.88         | 8.00        | 10.52        | 13.46          | 13.85         | 29  | 29          | 38           | 49             | 51            |
| Lyon        | 8.64             | 6.85         | 8.00        | 10.52        | 14.06          | 16.63         | 32  | 37          | 49           | 65             | 77            |
| McPherson   | 9.50             | 8.75         | 8.77        | 10.52        | 13.77          | 14.15         | 37  | 37          | 44           | 58             | 60            |
| Marion      | 7.23             | 7.35         | 8.02        | 10.52        | 13.38          | 13.81         | 41  | 44          | 58           | 74             | 76            |
| Marshall    | 11.43            | 8.17         | 8.96        | 11.02        | 14.13          | 17.40         | 29  | 31          | 39           | 49             | 61            |
| Meade       | 14.31            | 9.12         | 9.19        | 11.19        | 13.62          | 14.94         | 25  | 26          | 31           | 38             | 42            |
| Miami       | 8.70             | 11.02        | 13.25       | 15.21        | 20.58          | 21.65         | 51  | 61          | 70           | 95             | 100           |
| Mitchell    | 9.31             | 8.15         | 8.31        | 10.52        | 13.81          | 14.27         | 35  | 36          | 45           | 59             | 61            |
| Montgomery  | 9.18             | 7.54         | 8.42        | 10.52        | 12.94          | 16.10         | 33  | 37          | 46           | 56             | 70            |
| Morris      | 8.26             | 8.17         | 8.96        | 11.02        | 14.13          | 17.40         | 40  | 43          | 53           | 68             | 84            |
| Morton      | 12.70            | 9.12         | 9.19        | 11.19        | 13.62          | 14.94         | 29  | 29          | 35           | 43             | 47            |
| Nemaha      | 8.59             | 8.27         | 9.21        | 11.29        | 16.44          | 19.83         | 39  | 43          | 53           | 77             | 92            |
| Neosho      | 10.17            | 6.81         | 8.19        | 10.52        | 12.52          | 18.40         | 27  | 32          | 41           | 49             | 72            |
| Ness        | 12.80            | 9.12         | 9.19        | 11.19        | 13.62          | 14.94         | 28  | 29          | 35           | 43             | 47            |
| Norton      | 9.52             | 7.88         | 8.00        | 10.52        | 13.46          | 13.85         | 33  | 34          | 44           | 57             | 58            |
| Osage       | 6.08             | 9.10         | 9.90        | 12.12        | 15.37          | 16.15         | 60  | 65          | 80           | 101            | 106           |
| Osborne     | 7.53             | 7.88         | 8.00        | 10.52        | 13.46          | 13.85         | 42  | 42          | 56           | 72             | 74            |
| Ottawa      | 7.22             | 8.15         | 8.31        | 10.52        | 13.81          | 14.27         | 45  | 46          | 58           | 76             | 79            |

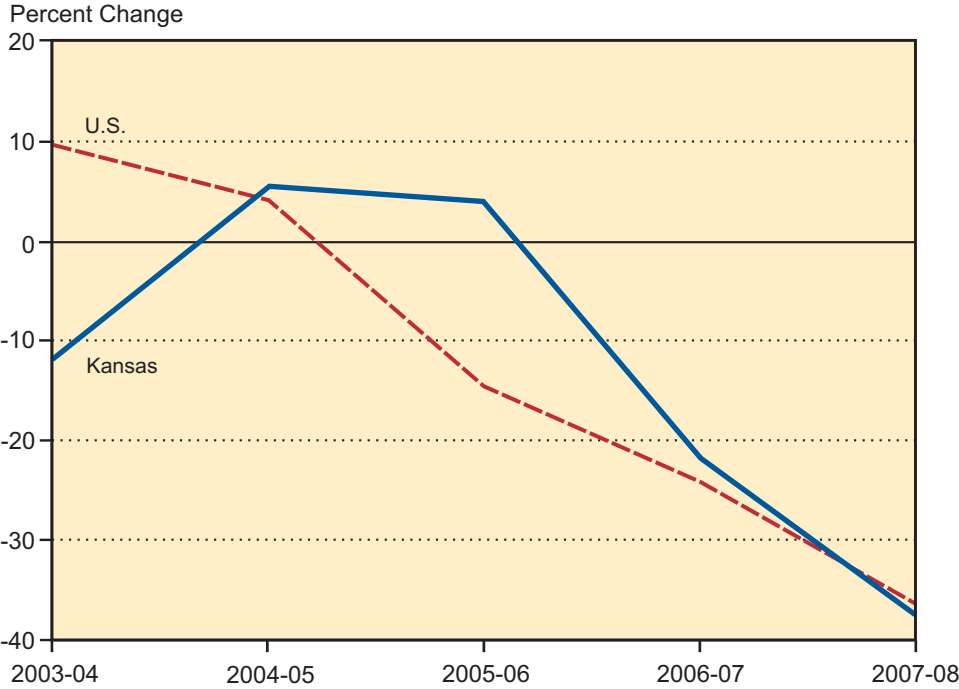
**Mean Renter Wage, Housing Wage, and Work Hours Needed  
to Afford Fair Market Rent in Kansas, by County  
2009**

| County        | Mean Renter Wage | Housing Wage  |                |                |                |                | Number of Work Hours Needed per Week at Mean Renter Wage to Afford Fair Market Rent |             |              |                |               |
|---------------|------------------|---------------|----------------|----------------|----------------|----------------|---|-------------|--------------|----------------|---------------|
|               |                  | Studio        | One Bedroom    | Two Bedrooms   | Three Bedrooms | Four Bedrooms  | Studio  | One Bedroom | Two Bedrooms | Three Bedrooms | Four Bedrooms |
| Pawnee        | 7.89             | 6.85          | 8.06           | 10.52          | 13.69          | 16.15          | 35  | 41          | 53           | 69             | 82            |
| Phillips      | 9.22             | 7.88          | 8.00           | 10.52          | 13.46          | 13.85          | 34  | 35          | 46           | 58             | 60            |
| Pottawatomie  | 10.94            | 7.12          | 9.87           | 10.94          | 13.92          | 16.06          | 26  | 36          | 40           | 51             | 59            |
| Pratt         | 8.94             | 6.85          | 8.02           | 10.52          | 13.63          | 16.08          | 31  | 36          | 47           | 61             | 72            |
| Rawlins       | 8.59             | 7.88          | 8.00           | 10.52          | 13.46          | 13.85          | 37  | 37          | 49           | 63             | 64            |
| Reno          | 9.79             | 7.50          | 8.35           | 10.94          | 15.00          | 15.42          | 31  | 34          | 45           | 61             | 63            |
| Republic      | \$5.95           | \$8.15        | \$8.31         | \$10.52        | \$13.81        | \$14.27        | 55  | 56          | 71           | 93             | 96            |
| Rice          | 10.24            | 7.62          | 8.31           | 10.52          | 13.94          | 14.38          | 30  | 32          | 41           | 54             | 56            |
| Riley         | 7.94             | 8.60          | 9.29           | 11.52          | 16.77          | 20.21          | 43  | 47          | 58           | 85             | 102           |
| Rooks         | 11.80            | 7.88          | 8.00           | 10.52          | 13.46          | 13.85          | 27  | 27          | 36           | 46             | 47            |
| Rush          | 10.53            | 6.85          | 8.06           | 10.52          | 13.69          | 16.15          | 26  | 31          | 40           | 52             | 61            |
| Russell       | 8.18             | 7.88          | 8.00           | 10.52          | 13.46          | 13.85          | 39  | 39          | 51           | 66             | 68            |
| Saline        | 10.56            | 8.71          | 8.73           | 11.50          | 15.33          | 15.77          | 33  | 33          | 44           | 58             | 60            |
| Scott         | 9.67             | 9.12          | 9.19           | 11.19          | 13.62          | 14.94          | 38  | 38          | 46           | 56             | 62            |
| Sedgwick      | 13.37            | 8.27          | 9.25           | 12.15          | 15.54          | 17.48          | 25  | 28          | 36           | 46             | 52            |
| Seward        | 10.26            | 7.88          | 9.69           | 11.21          | 13.77          | 16.69          | 31  | 38          | 44           | 54             | 65            |
| Shawnee       | 11.30            | 9.10          | 9.90           | 12.12          | 15.37          | 16.15          | 32  | 35          | 43           | 54             | 57            |
| Sheridan      | 10.33            | 7.88          | 8.00           | 10.52          | 13.46          | 13.85          | 31  | 31          | 41           | 52             | 54            |
| Sherman       | 7.95             | 7.75          | 8.00           | 10.52          | 13.19          | 13.62          | 39  | 40          | 53           | 66             | 68            |
| Smith         | 8.12             | 7.88          | 8.00           | 10.52          | 13.46          | 13.85          | 39  | 39          | 52           | 66             | 68            |
| Stafford      | 9.75             | 6.85          | 8.06           | 10.52          | 13.69          | 16.15          | 28  | 33          | 43           | 56             | 66            |
| Stanton       | 12.07            | 9.12          | 9.19           | 11.19          | 13.62          | 14.94          | 30  | 30          | 37           | 45             | 50            |
| Stevens       | 10.87            | 9.12          | 9.19           | 11.19          | 13.62          | 14.94          | 34  | 34          | 41           | 50             | 55            |
| Sumner        | 7.79             | 6.81          | 8.00           | 10.52          | 14.15          | 16.48          | 35  | 41          | 54           | 73             | 85            |
| Thomas        | 7.62             | 7.83          | 7.98           | 10.52          | 13.37          | 13.77          | 41  | 42          | 55           | 70             | 72            |
| Trego         | 10.40            | 7.88          | 8.00           | 10.52          | 13.46          | 13.85          | 30  | 31          | 40           | 52             | 53            |
| Wabaunsee     | 9.68             | 9.10          | 9.90           | 12.12          | 15.37          | 16.15          | 38  | 41          | 50           | 64             | 67            |
| Wallace       | 8.23             | 7.88          | 8.00           | 10.52          | 13.46          | 13.85          | 38  | 39          | 51           | 65             | 67            |
| Washington    | 8.82             | 8.15          | 8.31           | 10.52          | 13.81          | 14.27          | 37  | 38          | 48           | 63             | 65            |
| Wichita       | 12.69            | 9.12          | 9.19           | 11.19          | 13.62          | 14.94          | 29  | 29          | 35           | 43             | 47            |
| Wilson        | 9.07             | 7.60          | 8.44           | 10.52          | 13.52          | 14.71          | 34  | 37          | 46           | 60             | 65            |
| Woodson       | 7.63             | 7.60          | 8.46           | 10.52          | 13.56          | 14.75          | 40  | 44          | 55           | 71             | 77            |
| Wyandotte     | 14.34            | 11.02         | 13.25          | 15.21          | 20.58          | 21.65          | 31  | 37          | 42           | 57             | 60            |
| <b>Kansas</b> | <b>\$12.02</b>   | <b>\$9.02</b> | <b>\$10.18</b> | <b>\$12.55</b> | <b>\$16.65</b> | <b>\$18.36</b> | <b>30</b>   | <b>34</b>   | <b>42</b>    | <b>55</b>      | <b>61</b>     |

Source: National Low Income Housing Coalition, *Out of Reach 2009*, <http://www.nlihc.org/oor/oor2009/> (accessed May 20, 2009).

Housing wage is the per hour wage needed to afford a rental unit at fair market rent. Fair market rent is the amount that would be needed to pay the gross rent (shelter rent plus utilities) of privately owned, decent, and safe rental housing of a modest (non-luxury) nature with suitable amenities.

**Annual Percent Change of New Privately-Owned Housing Units  
Authorized by Building Permits, Kansas and the U.S.  
2003-2008**



Source: Institute for Policy & Social Research; data from the U.S. Census Bureau.

**New Privately-Owned Housing Units Authorized by Building Permits  
Kansas and the U.S., 2006-2008**

| Housing Structure Type                   | 2006               |                      | 2007               |                      | 2008               |                      |
|--|--------------------|----------------------|--------------------|----------------------|--------------------|----------------------|
|  | Kansas             | United States        | Kansas             | United States        | Kansas             | United States        |
| Housing Units in Structures with:        |                    |                      |                    |                      |                    |                      |
| 1 Unit                                   | 11,133             | 1,378,220            | 8,137              | 979,889              | 4,545              | 569,873              |
| 2 Units                                  | 350                | 35,256               | 448                | 28,098               | 210                | 15,824               |
| 3-4 Units                                | 186                | 41,348               | 462                | 31,464               | 102                | 16,541               |
| 5 or More Units                          | 2,950              | 384,079              | 2,426              | 358,964              | 2,338              | 290,533              |
| No. of Structures with 5 Units or More   | 174                | 19,220               | 143                | 17,284               | 147                | 13,525               |
| <b>Total</b>                             | <b>14,619</b>      | <b>1,838,903</b>     | <b>11,473</b>      | <b>1,398,415</b>     | <b>7,195</b>       | <b>892,771</b>       |
| Valuation (\$1,000s) in Structures with: |                    |                      |                    |                      |                    |                      |
| 1 Unit                                   | \$1,767,847        | \$245,687,007        | \$1,505,693        | \$183,679,171        | \$840,800          | \$109,549,238        |
| 2 Units                                  | 31,036             | 3,493,762            | 44,452             | 2,867,758            | 21,239             | 1,701,233            |
| 3-4 Units                                | 17,436             | 3,986,387            | 25,188             | 3,012,658            | 12,137             | 1,622,380            |
| 5 or More Units                          | 179,173            | 38,147,336           | 165,678            | 35,676,964           | 187,850            | 26,765,869           |
| <b>Total</b>                             | <b>\$1,995,492</b> | <b>\$291,314,492</b> | <b>\$1,741,011</b> | <b>\$225,236,551</b> | <b>\$1,062,026</b> | <b>\$139,638,720</b> |

Source: U.S. Census Bureau, Housing Units Authorized by Building Permits, Annual Data, <http://www.census.gov/const/www/C40/table2.html> (accessed April 1, 2009).

**New Privately-Owned Residential Housing Units Authorized by Building Permits in Kansas, by County, 2004-2007**

| County     | 2004        |             | 2005        |             | 2006        |             | 2007        |             |
|------------|-------------|-------------|-------------|-------------|-------------|-------------|-------------|-------------|
|            | Total Units | Total Cost  | Total Units | Total Cost  | Total Units | Total Cost  | Total Units | Total Cost  |
| Allen      | 6           | \$564,000   | 14          | \$2,244,366 | 24          | \$2,512,726 | 31          | \$3,357,070 |
| Anderson   | 33          | 3,960,000   | 24          | 3,795,000   | 28          | 3,415,000   | 23          | 3,535,000   |
| Atchison   | 27          | 3,400,684   | 25          | 3,403,466   | 33          | 6,432,512   | 9           | 1,309,021   |
| Barber     | 8           | 1,060,000   | 1           | 75,000      | 3           | 220,000     | 1           | 80,000      |
| Barton     | 35          | 2,779,560   | 50          | 5,635,500   | 18          | 2,677,948   | 33          | 3,431,346   |
| Bourbon    | 3           | 190,000     | 11          | 855,000     | 7           | 435,000     | 0           | 0           |
| Brown      | 3           | 220,000     | 5           | 680,000     | 4           | 578,000     | 2           | 233,000     |
| Butler     | 382         | 56,861,518  | 294         | 49,763,714  | 341         | 50,840,122  | 341         | 85,437,407  |
| Chase      | 0           | 0           | 0           | 0           | 0           | 0           | 0           | 0           |
| Chautauqua | 0           | 0           | 1           | 98,000      | 0           | 0           | 0           | 0           |
| Cherokee   | 3           | 527,000     | 3           | 396,000     | 7           | 425,000     | 0           | 0           |
| Cheyenne   | 0           | 0           | 0           | 0           | 0           | 0           | 0           | 0           |
| Clark      | 2           | 290,000     | 1           | 127,000     | 2           | 375,000     | 4           | 584,000     |
| Clay       | 10          | 995,000     | 13          | 1,408,000   | 14          | 2,150,971   | 4           | 1,018,000   |
| Cloud      | 2           | 180,000     | 0           | 0           | 1           | 178,000     | 0           | 0           |
| Coffey     | 28          | 3,096,080   | 23          | 2,877,653   | 22          | 3,555,000   | 60          | 6,668,500   |
| Comanche   | 0           | 0           | 0           | 0           | 1           | 250,000     | 1           | 300,000     |
| Cowley     | 81          | 11,204,337  | 79          | 11,864,276  | 81          | 11,351,861  | 93          | 12,322,653  |
| Crawford   | 107         | 14,054,943  | 141         | 17,742,005  | 158         | 18,566,568  | 231         | 24,406,889  |
| Decatur    | 0           | 0           | 0           | 0           | 0           | 0           | 0           | 0           |
| Dickinson  | 39          | 3,386,433   | 19          | 2,145,177   | 35          | 4,936,000   | 52          | 7,849,640   |
| Doniphan   | 24          | 2,189,796   | 15          | 2,059,465   | 14          | 1,368,883   | 5           | 676,565     |
| Douglas    | 834         | 102,343,329 | 599         | 82,993,238  | 514         | 76,502,587  | 343         | 36,989,724  |
| Edwards    | 1           | 180,000     | 0           | 0           | 0           | 0           | 0           | 0           |
| Elk        | -           | -           | -           | -           | -           | -           | -           | -           |
| Ellis      | 45          | 6,790,230   | 55          | 6,594,162   | 54          | 7,450,987   | 67          | 11,761,873  |
| Ellsworth  | 19          | 2,243,372   | 4           | 290,000     | 4           | 512,000     | 4           | 752,000     |
| Finney     | 30          | 3,029,757   | 13          | 1,984,000   | 12          | 1,834,357   | 8           | 1,433,916   |
| Ford       | 68          | 8,244,200   | 30          | 3,457,000   | 41          | 5,943,300   | 30          | 3,517,600   |
| Franklin   | 137         | 18,518,107  | 218         | 30,083,059  | 130         | 19,423,245  | 105         | 20,141,385  |
| Geary      | 64          | 8,308,872   | 0           | 0           | 1,686       | 138,015,507 | 1,114       | 87,447,938  |
| Gove       | 0           | 0           | 0           | 0           | 0           | 0           | 0           | 0           |
| Graham     | 0           | 0           | 10          | 500,000     | 0           | 0           | 0           | 0           |
| Grant      | 10          | 576,227     | 2           | 269,900     | 2           | 93,574      | 0           | 0           |
| Gray       | 7           | 915,000     | 7           | 801,496     | 10          | 1,725,704   | 9           | 2,556,140   |
| Greeley    | 1           | 145,000     | 0           | 0           | 0           | 0           | 0           | 0           |
| Greenwood  | 1           | 125,000     | 1           | 37,000      | 2           | 172,000     | 1           | 92,000      |

**New Privately-Owned Residential Housing Units Authorized by Building Permits in Kansas, by County, 2004-2007**

| County      | 2004        |             | 2005        |             | 2006        |             | 2007        |             |
|-------------|-------------|-------------|-------------|-------------|-------------|-------------|-------------|-------------|
|             | Total Units | Total Cost  | Total Units | Total Cost  | Total Units | Total Cost  | Total Units | Total Cost  |
| Hamilton    | 3           | \$325,000   | 1           | \$90,000    | 3           | \$485,000   | 0           | \$0         |
| Harper      | 1           | 18,200      | 10          | 1,501,580   | 1           | 15,000      | 15          | 2,204,220   |
| Harvey      | 101         | 12,341,072  | 133         | 17,352,329  | 136         | 21,516,309  | 104         | 16,204,653  |
| Haskell     | 0           | 0           | 0           | 0           | 0           | 0           | 0           | 0           |
| Hodgeman    | -           | -           | -           | -           | -           | -           | -           | -           |
| Jackson     | 74          | 9,085,000   | 7           | 690,000     | 56          | 7,274,600   | 47          | 5,917,597   |
| Jefferson   | 110         | 14,634,500  | 132         | 16,236,850  | 105         | 13,961,300  | 83          | 11,209,379  |
| Jewell      | 0           | 0           | 1           | 100,000     | 0           | 0           | 1           | 290,000     |
| Johnson     | 4,398       | 807,383,642 | 4,399       | 781,145,368 | 3,744       | 681,689,578 | 2,573       | 567,235,447 |
| Kearny      | 10          | 605,511     | 4           | 415,000     | 3           | 581,000     | 1           | 112,000     |
| Kingman     | 6           | 792,000     | 1           | 193,800     | 3           | 555,000     | 28          | 2,530,000   |
| Kiowa       | 0           | 0           | 0           | 0           | 0           | 0           | 152         | 18,597,365  |
| Labette     | 9           | 657,585     | 22          | 2,517,083   | 18          | 1,891,369   | 17          | 1,559,268   |
| Lane        | 0           | 0           | 0           | 0           | 0           | 0           | 0           | 0           |
| Leavenworth | 590         | 77,105,739  | 675         | 93,771,837  | 479         | 70,966,974  | 478         | 75,530,353  |
| Lincoln     | 1           | 85,000      | 0           | 0           | 3           | 530,000     | 0           | 0           |
| Linn        | 88          | 12,039,989  | 57          | 9,444,125   | 47          | 7,874,371   | 47          | 6,450,201   |
| Logan       | 8           | 681,332     | 2           | 276,106     | 0           | 0           | 0           | 0           |
| Lyon        | 173         | 14,082,276  | 172         | 14,641,865  | 83          | 8,693,730   | 96          | 9,253,327   |
| McPherson   | 128         | 19,266,780  | 88          | 13,204,400  | 59          | 9,444,575   | 86          | 12,236,500  |
| Marion      | 64          | 4,655,825   | 28          | 970,300     | 70          | 5,707,500   | 26          | 2,559,028   |
| Marshall    | 11          | 1,468,000   | 9           | 1,575,000   | 13          | 1,449,000   | 24          | 2,245,000   |
| Meade       | 0           | 0           | 0           | 0           | 1           | 85,000      | 1           | 150,000     |
| Miami       | 282         | 43,000,278  | 248         | 42,994,993  | 214         | 40,225,653  | 175         | 26,413,379  |
| Mitchell    | 8           | 1,406,000   | 2           | 235,000     | 4           | 622,942     | 6           | 926,000     |
| Montgomery  | 11          | 1,160,268   | 14          | 1,218,671   | 22          | 2,324,748   | 37          | 5,049,774   |
| Morris      | 7           | 688,650     | 10          | 1,533,000   | 14          | 1,622,884   | 17          | 2,175,890   |
| Morton      | 0           | 0           | 1           | 200,000     | 5           | 355,050     | 1           | 200,000     |
| Nemaha      | 8           | 1,455,000   | 25          | 3,577,610   | 8           | 1,237,000   | 13          | 2,266,000   |
| Neosho      | 7           | 699,000     | 12          | 1,196,219   | 6           | 554,000     | 12          | 1,153,161   |
| Ness        | 1           | 145,000     | 0           | 0           | 0           | 0           | 0           | 0           |
| Norton      | 1           | 65,000      | 0           | 0           | 12          | 1,200,000   | 1           | 125,000     |
| Osage       | 80          | 2,631,435   | 58          | 7,837,381   | 70          | 2,234,265   | 53          | 9,046,000   |
| Osborne     | 0           | 0           | 0           | 0           | 1           | 250,000     | 1           | 329,800     |
| Ottawa      | 6           | 539,000     | 15          | 1,975,000   | 5           | 891,000     | 31          | 4,576,994   |
| Pawnee      | 3           | 429,355     | 6           | 696,500     | 1           | 80,000      | 10          | 1,000,000   |

**New Privately-Owned Residential Housing Units Authorized by Building Permits in Kansas, by County, 2004-2007**

| County        | 2004          |                        | 2005          |                        | 2006          |                        | 2007          |                        |
|---------------|---------------|------------------------|---------------|------------------------|---------------|------------------------|---------------|------------------------|
|               | Total Units   | Total Cost             | Total Units   | Total Cost             | Total Units   | Total Cost             | Total Units   | Total Cost             |
| Phillips      | 1             | \$375,000              | 0             | \$0                    | 2             | \$205,000              | 2             | \$250,000              |
| Pottawatomie  | 131           | 23,105,061             | 256           | 36,608,191             | 266           | 52,515,490             | 144           | 28,022,750             |
| Pratt         | 16            | 2,389,200              | 4             | 580,000                | 5             | 761,000                | 7             | 1,103,000              |
| Rawlins       | 0             | 0                      | 0             | 0                      | 0             | 0                      | 0             | 0                      |
| Reno          | 99            | 13,614,768             | 186           | 18,848,689             | 158           | 22,897,765             | 140           | 18,168,920             |
| Republic      | 0             | 0                      | 39            | 4,627,120              | 0             | 0                      | 1             | 100,000                |
| Rice          | 8             | 917,355                | 8             | 847,800                | 12            | 1,767,045              | 14            | 1,992,659              |
| Riley         | 438           | 45,328,328             | 407           | 54,105,682             | 856           | 105,499,206            | 376           | 52,047,071             |
| Rooks         | 1             | 105,000                | 2             | 115,000                | 5             | 565,000                | 12            | 1,431,500              |
| Rush          | 0             | 0                      | 1             | 125,000                | 5             | 744,854                | 2             | 305,665                |
| Russell       | 4             | 825,000                | 11            | 1,619,047              | 3             | 288,219                | 5             | 1,474,000              |
| Saline        | 155           | 16,752,552             | 136           | 14,788,192             | 147           | 19,457,384             | 130           | 18,673,730             |
| Scott         | 9             | 1,112,000              | 1             | 317,000                | 1             | 250,000                | 1             | 95,000                 |
| Sedgwick      | 2,474         | 291,720,615            | 2,766         | 322,377,460            | 3,068         | 311,032,360            | 2,197         | 280,542,083            |
| Seward        | 26            | 2,498,000              | 31            | 3,191,666              | 48            | 4,135,000              | 63            | 5,906,000              |
| Shawnee       | 861           | 145,229,849            | 897           | 144,153,839            | 661           | 110,343,062            | 807           | 112,000,837            |
| Sheridan      | -             | -                      | -             | -                      | -             | -                      | -             | -                      |
| Sherman       | 15            | 712,268                | 2             | 274,119                | 6             | 560,029                | 3             | 452,559                |
| Smith         | 0             | 0                      | 0             | 0                      | 11            | 1,151,934              | 0             | 0                      |
| Stafford      | 1             | 175,000                | 0             | 0                      | 0             | 0                      | 2             | 193,000                |
| Stanton       | 0             | 0                      | 1             | 347,000                | 3             | 610,000                | 0             | 0                      |
| Stevens       | 4             | 584,000                | 0             | 0                      | 8             | 879,493                | 4             | 870,000                |
| Sumner        | 54            | 6,023,000              | 48            | 5,874,100              | 37            | 5,288,100              | 44            | 6,335,375              |
| Thomas        | 3             | 700,000                | 3             | 520,000                | 2             | 350,000                | 1             | 435,000                |
| Trego         | 25            | 1,962,000              | 1             | 75,000                 | 0             | 0                      | 0             | 0                      |
| Wabaunsee     | 26            | 3,609,880              | 31            | 5,053,157              | 21            | 3,543,267              | 23            | 4,107,225              |
| Wallace       | 0             | 0                      | 0             | 0                      | 2             | 65,000                 | 0             | 0                      |
| Washington    | 2             | 259,118                | 0             | 0                      | 1             | 75,000                 | 3             | 405,665                |
| Wichita       | 1             | 100,000                | 0             | 0                      | 1             | 68,000                 | 0             | 0                      |
| Wilson        | 2             | 65,000                 | 3             | 350,000                | 5             | 295,000                | 8             | 290,000                |
| Woodson       | 7             | 702,000                | 2             | 45,000                 | 2             | 50,000                 | 0             | 0                      |
| Wyandotte     | 239           | 26,157,265             | 777           | 99,088,113             | 563           | 70,153,621             | 445           | 55,743,661             |
| <b>Kansas</b> | <b>12,801</b> | <b>\$1,868,847,141</b> | <b>13,403</b> | <b>\$1,961,700,669</b> | <b>14,333</b> | <b>\$1,959,810,529</b> | <b>11,141</b> | <b>\$1,694,393,703</b> |

Source: U.S. Census Bureau, Manufacturing and Construction Division, Building Permits Branch, *Housing Units Authorized by Building Permits*, 2004, 2005, 2006, and 2007, <http://censtats.census.gov/bldg/bldgprmt.shtml> (accessed October 16, 2008).

Single dash (-) indicates not a permit issuing place.

**Value of Construction Permits Issued in Selected Kansas Cities  
2003-2008  
(thousands of dollars)**

| City            | 2003     | 2004     | 2005     | 2006     | 2007     | 2008     | Percent Change<br>2007-2008 |
|-----------------|----------|----------|----------|----------|----------|----------|-----------------------------|
| Andover         | \$30,046 | \$33,924 | \$47,009 | \$35,239 | \$78,485 | \$44,467 | -43.3                       |
| Arkansas City   | 4,797    | 15,036   | 4,267    | 14,778   | 6,318    | 3,913    | -38.1                       |
| Atchison        | 5,274    | 6,818    | 7,223    | 5,422    | 4,331    | 36,353   | 739.4                       |
| Augusta         | 2,261    | 7,470    | 12,770   | 5,620    | 9,745    | 5,521    | -43.3                       |
| Bonner Springs  | 12,497   | 7,250    | 23,544   | 18,579   | 13,478   | 32,385   | 140.3                       |
| Coffeyville     | 36,363   | 2,801    | 6,283    | 9,246    | 8,137    | 22,220   | 173.1                       |
| Derby           | 37,293   | 31,584   | 38,816   | 38,922   | 34,896   | 58,883   | 68.7                        |
| Dodge City      | 19,782   | 16,763   | 9,308    | 33,154   | 24,570   | 18,380   | -25.2                       |
| El Dorado       | 14,723   | 16,277   | 6,335    | 29,574   | 15,416   | 7,612    | -50.6                       |
| Emporia         | 21,017   | 21,054   | 21,675   | 22,160   | 25,469   | 27,046   | 6.2                         |
| Fort Scott      | 2,862    | 2,591    | 2,238    | 6,827    | 4,247    | 9,846    | 131.8                       |
| Garden City     | 19,303   | 14,000   | 11,264   | 10,068   | 14,678   | 39,611   | 169.9                       |
| Gardner         | 62,266   | 59,559   | 98,432   | 61,255   | 38,345   | 13,402   | -65.0                       |
| Great Bend      | 22,539   | 8,166    | 15,078   | 9,457    | 12,435   | 21,525   | 73.1                        |
| Hays            | 8,547    | 24,739   | 18,245   | 23,337   | 25,805   | 24,721   | -4.2                        |
| Hutchinson      | 22,500   | 51,604   | 36,148   | 76,550   | 54,860   | 116,089  | 111.6                       |
| Independence    | 6,667    | 19,709   | 3,405    | 5,512    | 3,092    | 7,811    | 152.6                       |
| Junction City   | 22,387   | 19,113   | 32,728   | 186,996  | 117,034  | 38,874   | -66.8                       |
| Kansas City     | 110,647  | 143,592  | 198,743  | 138,794  | 153,240  | 140,725  | -8.2                        |
| Lawrence        | 217,140  | 101,344  | 131,410  | 171,998  | 104,458  | 146,504  | 40.3                        |
| Leavenworth     | 34,701   | 43,149   | 30,789   | 32,672   | 32,509   | 33,329   | 2.5                         |
| Leawood         | 160,900  | 157,000  | 210,740  | 148,734  | 170,751  | 123,957  | -27.4                       |
| Lenexa          | 141,010  | 197,099  | 174,700  | 195,005  | 282,411  | 203,518  | -27.9                       |
| Liberal         | -        | 13,180   | 11,117   | 9,450    | 14,886   | 6,554    | -56.0                       |
| McPherson       | 25,472   | 13,409   | 15,629   | 24,900   | 13,215   | 27,461   | 107.8                       |
| Manhattan       | 82,192   | 66,077   | 76,229   | 147,189  | 91,299   | 104,696  | 14.7                        |
| Merriam         | 11,084   | 21,474   | 26,968   | 29,949   | 57,415   | 33,215   | -42.1                       |
| Mulvane         | 8,320    | 8,977    | 22,767   | 11,611   | 2,436    | 1,393    | -42.8                       |
| Newton          | 15,009   | 20,994   | 17,775   | 36,783   | 23,183   | 26,574   | 14.6                        |
| Olathe          | 464,390  | 266,086  | 345,916  | 403,271  | 353,449  | 318,327  | -9.9                        |
| Ottawa          | 25,711   | 18,065   | 39,796   | 57,004   | 32,551   | 26,794   | -17.7                       |
| Overland Park   | 388,266  | 341,579  | 565,869  | 409,793  | 448,058  | 335,153  | -25.2                       |
| Park City       | 16,417   | 17,841   | 13,420   | 24,735   | 19,145   | 30,583   | 59.7                        |
| Parsons         | 4,578    | 6,616    | 16,077   | 19,072   | 19,603   | 10,890   | -44.4                       |
| Pittsburg       | 29,537   | 16,146   | 36,405   | 21,359   | 36,875   | 18,780   | -49.1                       |
| Prairie Village | 11,010   | 12,569   | 20,487   | 19,850   | 22,113   | 41,372   | 87.1                        |
| Salina          | 46,213   | 34,582   | 49,114   | 69,328   | 56,366   | 35,818   | -36.5                       |
| Shawnee         | 185,308  | 181,654  | 159,506  | 105,985  | 83,634   | 91,063   | 8.9                         |
| Topeka          | 151,648  | 186,122  | 163,405  | 159,002  | 151,431  | 118,057  | -22.0                       |
| Wellington      | 3,951    | 3,368    | 15,940   | 13,549   | 6,035    | 4,220    | -30.1                       |
| Wichita         | 489,707  | 546,941  | 485,565  | 427,440  | 528,407  | 514,553  | -2.6                        |
| Winfield        | 7,891    | 27,423   | 15,994   | 30,802   | 8,365    | 24,909   | 197.8                       |

Source: Wichita State University, W. Frank Barton School of Business, Center for Economic Development and Business Research.  
Single dash (-) indicates not available.