

# Employment and Earnings

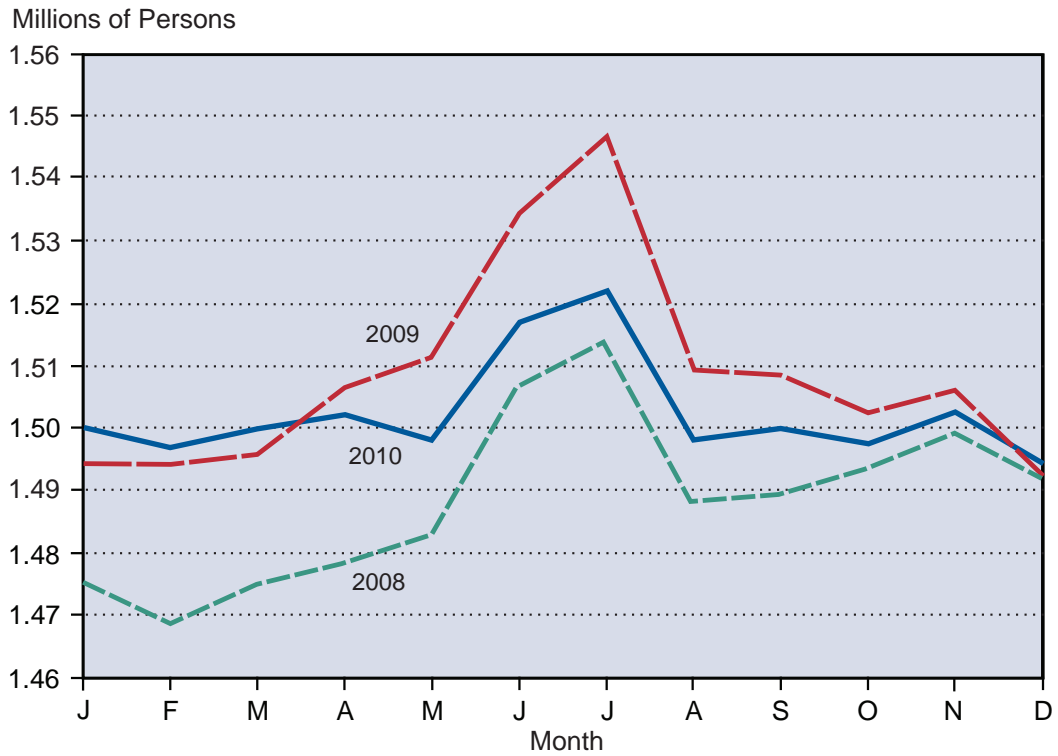
Employment  
and Earnings

**Civilian Labor Force Estimates for the U.S., by State  
2010 Annual Averages**

<b>County</b>	<b>Labor Force</b>	<b>Employed</b>	<b>Unemployed</b>	<b>Unemployment Rate</b>
Alabama	2,127,211	1,925,064	202,147	9.5
Alaska	361,331	332,403	28,928	8.0
Arizona	3,176,155	2,859,967	316,188	10.0
Arkansas	1,353,193	1,246,647	106,546	7.9
California	18,176,230	15,916,288	2,259,942	12.4
Colorado	2,687,396	2,447,712	239,684	8.9
Connecticut	1,897,433	1,724,024	173,409	9.1
Delaware	425,685	389,583	36,102	8.5
District of Columbia	333,626	300,663	32,963	9.9
Florida	9,223,834	8,159,147	1,064,687	11.5
Georgia	4,693,711	4,213,719	479,992	10.2
Hawaii	629,030	587,407	41,623	6.6
Idaho	757,939	687,321	70,618	9.3
Illinois	6,646,171	5,964,868	681,303	10.3
Indiana	3,142,265	2,822,693	319,572	10.2
Iowa	1,670,621	1,568,012	102,609	6.1
<b>Kansas</b>	<b>1,502,313</b>	<b>1,396,558</b>	<b>105,755</b>	<b>7.0</b>
Kentucky	2,083,958	1,865,961	217,997	10.5
Louisiana	2,081,675	1,926,492	155,183	7.5
Maine	697,251	641,978	55,273	7.9
Maryland	2,980,772	2,758,219	222,553	7.5
Massachusetts	3,494,271	3,197,210	297,061	8.5
Michigan	4,789,652	4,192,819	596,833	12.5
Minnesota	2,963,402	2,746,492	216,910	7.3
Mississippi	1,313,441	1,176,340	137,101	10.4
Missouri	3,014,310	2,725,527	288,783	9.6
Montana	497,395	461,337	36,058	7.2
Nebraska	976,858	931,414	45,444	4.7
Nevada	1,350,309	1,149,537	200,772	14.9
New Hampshire	743,955	698,859	45,096	6.1
New Jersey	4,502,449	4,076,713	425,736	9.5
New Mexico	953,314	873,112	80,202	8.4
New York	9,630,854	8,806,778	824,076	8.6
North Carolina	4,512,770	4,036,343	476,427	10.6
North Dakota	370,224	355,615	14,609	3.9
Ohio	5,897,559	5,303,019	594,540	10.1
Oklahoma	1,754,690	1,630,925	123,765	7.1
Oregon	1,984,549	1,769,599	214,950	10.8
Pennsylvania	6,340,034	5,791,061	548,973	8.7
Rhode Island	576,028	509,073	66,955	11.6
South Carolina	2,164,612	1,922,815	241,797	11.2
South Dakota	444,061	422,562	21,499	4.8
Tennessee	3,056,701	2,759,243	297,458	9.7
Texas	12,136,384	11,141,903	994,481	8.2
Utah	1,368,048	1,262,083	105,965	7.7
Vermont	360,765	338,295	22,470	6.2
Virginia	4,185,321	3,896,167	289,154	6.9
Washington	3,531,626	3,192,117	339,509	9.6
West Virginia	782,340	711,068	71,272	9.1
Wisconsin	3,062,636	2,807,301	255,335	8.3
Wyoming	293,769	273,313	20,456	7.0
<b>United States</b>	<b>153,700,127</b>	<b>138,893,366</b>	<b>14,806,761</b>	<b>9.6</b>

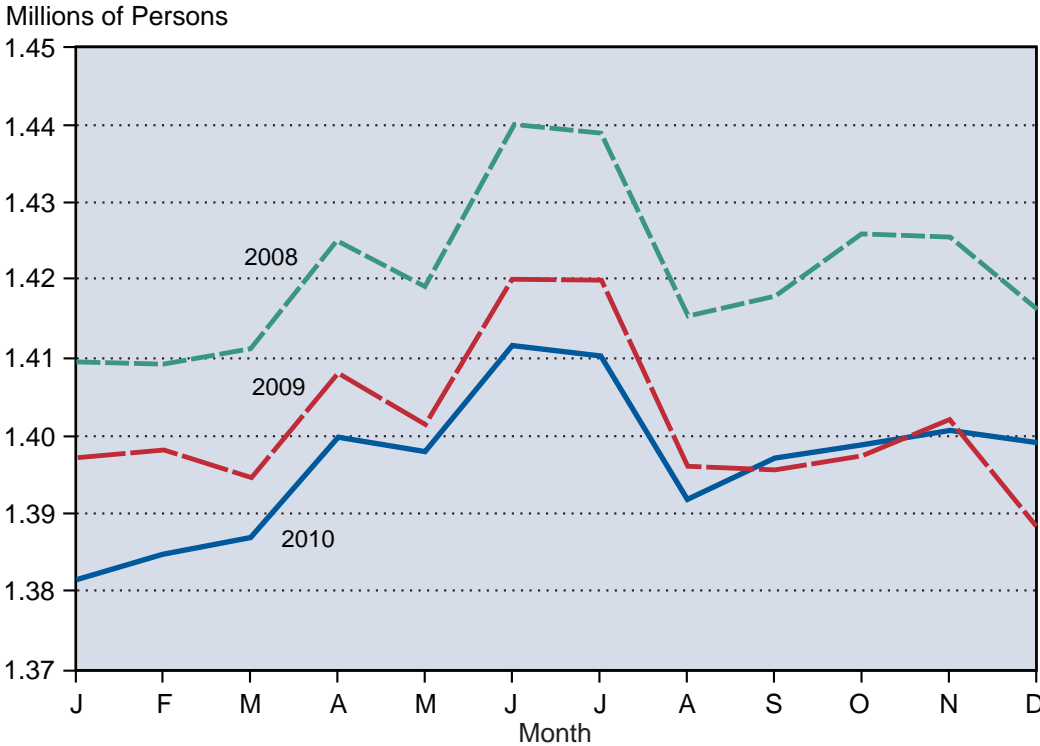
Source: U.S. Department of Labor, Bureau of Labor Statistics, <http://www.bls.gov/lau/home.htm> (accessed March 18, 2011).

## Total Civilian Labor Force Estimates for Kansas 2008-2010



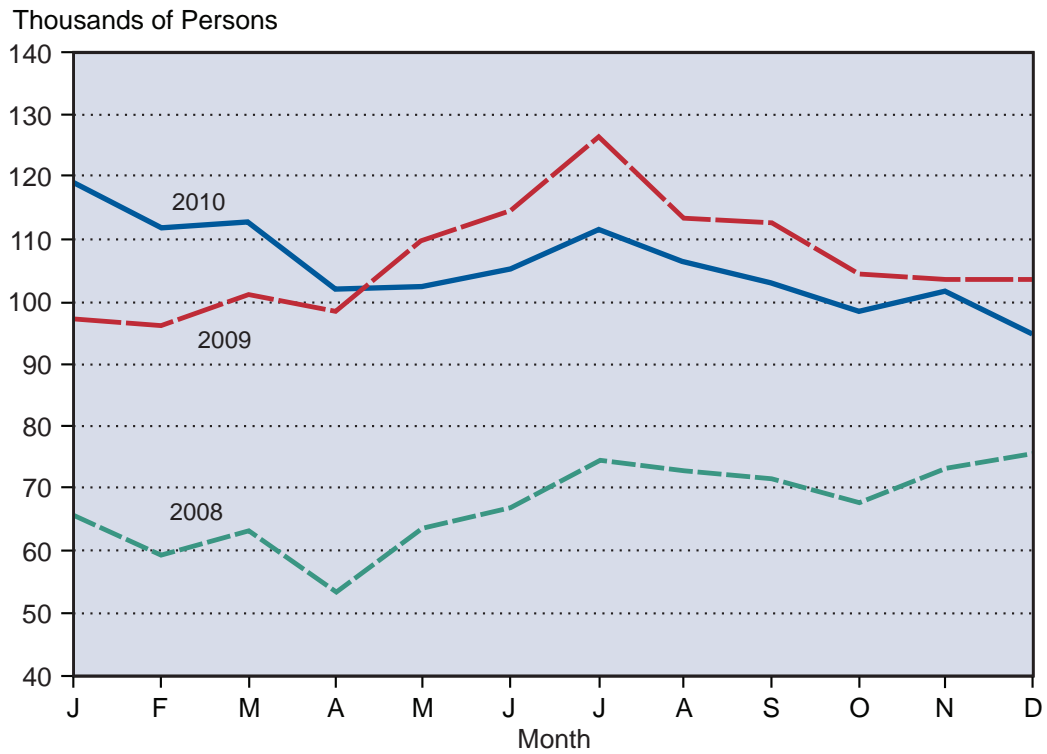
Source: Institute for Policy & Social Research; data from the U.S. Bureau of Labor Statistics.  
Data revised annually.

## Employed Civilian Labor Force Estimates for Kansas 2008-1010



Source: Institute for Policy & Social Research; data from the U.S. Bureau of Labor Statistics.  
Data revised annually.

## Unemployed Civilian Labor Force Estimates for Kansas 2008-2010



Source: Institute for Policy & Social Research; data from U.S. Bureau of Labor Statistics.  
Data revised annually.

**Civilian Labor Force in Kansas  
1957-2010  
(Place of Residence)**

<b>Year</b>	<b>Labor Force</b>	<b>Number Employed</b>	<b>Number Unemployed</b>	<b>Unemployment Rate</b>
1957	806,400	780,800	25,600	3.2
1958	817,500	781,400	36,100	4.4
1959	798,500	770,000	28,500	3.6
1960	862,800	827,900	34,900	4.0
1961	864,600	824,100	40,500	4.7
1962	863,000	830,700	32,300	3.7
1963	849,400	815,600	33,800	4.0
1964	857,900	826,500	31,400	3.7
1965	874,100	843,800	30,300	3.5
1966	882,000	858,700	23,300	2.6
1967	896,400	872,100	24,300	2.7
1968	911,100	887,400	23,700	2.6
1969	933,000	906,000	27,000	2.9
1970	929,600	885,000	44,600	4.8
1971	935,400	883,700	51,700	5.5
1972	968,600	930,500	38,100	3.9
1973	1,014,100	982,600	31,500	3.1
1974	1,043,900	1,007,500	36,400	3.5
1975*	1,067,900	1,017,000	50,900	4.8
1976	1,075,390	1,030,125	45,265	4.2
1977	1,110,790	1,066,860	43,930	4.0
1978	1,139,240	1,103,688	35,552	3.1
1979	1,166,800	1,130,384	36,416	3.1
1980	1,190,359	1,136,602	53,757	4.5
1981	1,192,887	1,142,125	50,762	4.3
1982	1,179,169	1,102,454	76,715	6.5
1983	1,185,928	1,114,583	71,345	6.0
1984	1,198,398	1,138,700	59,698	5.0
1985	1,223,802	1,160,675	63,127	5.2
1986	1,243,442	1,176,462	66,980	5.4
1987	1,259,792	1,197,875	61,917	4.9
1988	1,273,147	1,215,080	58,067	4.6
1989	1,281,884	1,227,940	53,944	4.2
1990	1,270,352	1,215,102	55,250	4.3
1991	1,283,125	1,225,007	58,118	4.5
1992	1,304,907	1,244,438	60,469	4.6
1993	1,325,075	1,257,847	67,228	5.1
1994	1,344,443	1,279,098	65,345	4.9
1995	1,355,850	1,296,202	59,648	4.4
1996	1,371,948	1,311,843	60,105	4.4
1997	1,383,486	1,329,797	53,689	3.9
1998	1,401,588	1,348,793	52,795	3.8
1999	1,409,556	1,359,908	49,648	3.5
2000	1,405,104	1,351,988	53,116	3.8
2001	1,408,103	1,347,715	60,388	4.3
2002	1,424,054	1,350,960	73,094	5.1
2003	1,445,385	1,364,787	80,598	5.6
2004	1,462,277	1,381,343	80,934	5.5
2005*	1,465,098	1,390,292	74,806	5.1
2006	1,468,402	1,403,938	64,464	4.4
2007	1,477,051	1,415,942	61,109	4.1
2008	1,488,421	1,421,107	67,314	4.5
2009	1,508,422	1,401,609	106,813	7.1
2010	1,502,313	1,396,558	105,755	7.0

Source: Kansas Department of Labor, Labor Market Information Services in conjunction with U.S. Department of Labor, Bureau of Labor Statistics.

Data from 1976 to 2009 revised.

\* Data forward not comparable to prior years due to revised model.

**Civilian Labor Force Estimates for Kansas, by County  
2009 and 2010**

County	2009r				2010			
	Labor Force	Employed	Unemployed	Unemployment Rate	Labor Force	Employed	Unemployed	Unemployment Rate
Allen	7,490	6,886	604	8.1	7,593	7,019	574	7.6
Anderson	4,454	4,104	350	7.9	4,487	4,137	350	7.8
Atchison	8,810	7,975	835	9.5	8,504	7,743	761	8.9
Barber	2,900	2,767	133	4.6	2,809	2,689	120	4.3
Barton	15,937	15,012	925	5.8	15,973	15,078	895	5.6
Bourbon	8,737	8,110	627	7.2	8,633	7,987	646	7.5
Brown	5,874	5,533	341	5.8	5,690	5,346	344	6.0
Butler	32,510	30,048	2,462	7.6	32,160	29,478	2,682	8.3
Chase	1,536	1,452	84	5.5	1,524	1,442	82	5.4
Chautauqua	1,857	1,689	168	9.0	1,875	1,715	160	8.5
Cherokee	11,537	10,538	999	8.7	11,420	10,439	981	8.6
Cheyenne	1,518	1,463	55	3.6	1,592	1,535	57	3.6
Clark	1,269	1,221	48	3.8	1,259	1,207	52	4.1
Clay	5,250	5,009	241	4.6	5,421	5,166	255	4.7
Cloud	5,775	5,511	264	4.6	5,852	5,593	259	4.4
Coffey	5,539	5,208	331	6.0	5,594	5,226	368	6.6
Comanche	1,097	1,057	40	3.6	1,074	1,029	45	4.2
Cowley	18,467	17,145	1,322	7.2	18,501	17,168	1,333	7.2
Crawford	20,107	18,337	1,770	8.8	20,327	18,651	1,676	8.2
Decatur	1,801	1,733	68	3.8	1,706	1,632	74	4.3
Dickinson	10,842	10,260	582	5.4	10,961	10,295	666	6.1
Doniphan	4,609	4,116	493	10.7	4,474	4,060	414	9.3
Douglas	62,760	59,062	3,698	5.9	63,316	59,394	3,922	6.2
Edwards	1,791	1,713	78	4.4	1,771	1,682	89	5.0
Elk	1,518	1,390	128	8.4	1,571	1,450	121	7.7
Ellis	17,956	17,237	719	4.0	18,784	18,090	694	3.7
Ellsworth	3,846	3,680	166	4.3	3,910	3,739	171	4.4
Finney	19,598	18,711	887	4.5	20,056	19,074	982	4.9
Ford	18,782	18,105	677	3.6	19,686	18,946	740	3.8
Franklin	13,579	12,299	1,280	9.4	13,418	12,217	1,201	9.0
Geary	14,028	12,963	1,065	7.6	14,545	13,371	1,174	8.1
Gove	1,610	1,561	49	3.0	1,635	1,586	49	3.0
Graham	1,474	1,407	67	4.5	1,465	1,401	64	4.4
Grant	4,125	3,959	166	4.0	4,191	4,018	173	4.1
Gray	3,450	3,342	108	3.1	3,511	3,401	110	3.1
Greeley	727	699	28	3.9	737	709	28	3.8
Greenwood	3,556	3,312	244	6.9	3,433	3,172	261	7.6

**Civilian Labor Force Estimates for Kansas, by County  
2009 and 2010**

County	2009r				2010			
	Labor Force	Employed	Unemployed	Unemployment Rate	Labor Force	Employed	Unemployed	Unemployment Rate
Hamilton	1,334	1,280	54	4.0	1,302	1,247	55	4.2
Harper	3,444	3,264	180	5.2	3,462	3,280	182	5.3
Harvey	18,144	16,828	1,316	7.3	17,829	16,510	1,319	7.4
Haskell	2,282	2,203	79	3.5	2,349	2,265	84	3.6
Hodgeman	947	908	39	4.1	994	954	40	4.0
Jackson	6,993	6,491	502	7.2	7,009	6,550	459	6.5
Jefferson	9,662	8,908	754	7.8	9,791	8,990	801	8.2
Jewell	1,981	1,895	86	4.3	1,921	1,835	86	4.5
Johnson	297,731	277,703	20,028	6.7	295,026	275,853	19,173	6.5
Kearny	2,159	2,060	99	4.6	2,227	2,128	99	4.4
Kingman	4,601	4,335	266	5.8	4,547	4,284	263	5.8
Kiowa	1,567	1,511	56	3.6	1,595	1,527	68	4.3
Labette	11,590	10,566	1,024	8.8	11,214	10,135	1,079	9.6
Lane	1,133	1,095	38	3.4	1,164	1,124	40	3.4
Leavenworth	32,525	29,839	2,686	8.3	32,353	29,640	2,713	8.4
Lincoln	2,007	1,894	113	5.6	1,962	1,851	111	5.7
Linn	4,510	3,991	519	11.5	4,433	3,965	468	10.6
Logan	1,717	1,659	58	3.4	1,705	1,646	59	3.5
Lyon	18,520	17,350	1,170	6.3	18,410	17,228	1,182	6.4
McPherson	16,818	15,961	857	5.1	16,619	15,759	860	5.2
Marion	6,975	6,578	397	5.7	6,804	6,411	393	5.8
Marshall	6,118	5,766	352	5.8	6,135	5,830	305	5.0
Meade	2,539	2,439	100	3.9	2,593	2,488	105	4.0
Miami	16,047	14,692	1,355	8.4	15,838	14,594	1,244	7.9
Mitchell	3,786	3,605	181	4.8	3,642	3,453	189	5.2
Montgomery	18,629	16,743	1,886	10.1	18,364	16,459	1,905	10.4
Morris	3,065	2,845	220	7.2	3,083	2,858	225	7.3
Morton	1,771	1,695	76	4.3	1,728	1,655	73	4.2
Nemaha	5,878	5,630	248	4.2	6,042	5,796	246	4.1
Neosho	8,680	7,927	753	8.7	8,683	7,938	745	8.6
Ness	1,850	1,775	75	4.1	1,840	1,779	61	3.3
Norton	2,877	2,747	130	4.5	2,823	2,697	126	4.5
Osage	8,485	7,807	678	8.0	8,592	7,878	714	8.3
Osborne	2,281	2,177	104	4.6	2,340	2,231	109	4.7
Ottawa	3,395	3,200	195	5.7	3,296	3,108	188	5.7
Pawnee	3,929	3,774	155	3.9	3,894	3,726	168	4.3
Phillips	3,176	2,974	202	6.4	3,112	2,962	150	4.8

**Civilian Labor Force Estimates for Kansas, by County  
2009 and 2010**

County	2009r				2010			
	Labor Force	Employed	Unemployed	Unemployment Rate	Labor Force	Employed	Unemployed	Unemployment Rate
Pottawatomie	11,026	10,380	646	5.9	11,301	10,707	594	5.3
Pratt	5,943	5,639	304	5.1	5,966	5,674	292	4.9
Rawlins	1,309	1,256	53	4.0	1,330	1,277	53	4.0
Reno	34,873	32,778	2,095	6.0	34,751	32,640	2,111	6.1
Republic	2,880	2,755	125	4.3	2,859	2,741	118	4.1
Rice	6,007	5,697	310	5.2	5,917	5,628	289	4.9
Riley	37,286	35,576	1,710	4.6	38,620	36,697	1,923	5.0
Rooks	2,787	2,595	192	6.9	2,711	2,541	170	6.3
Rush	1,693	1,594	99	5.8	1,730	1,635	95	5.5
Russell	3,580	3,398	182	5.1	3,575	3,389	186	5.2
Saline	31,646	29,852	1,794	5.7	30,896	28,998	1,898	6.1
Scott	2,866	2,777	89	3.1	2,903	2,802	101	3.5
Sedgwick	257,857	235,524	22,333	8.7	253,045	231,064	21,981	8.7
Seward	11,079	10,521	558	5.0	11,017	10,498	519	4.7
Shawnee	93,991	87,655	6,336	6.7	95,017	88,457	6,560	6.9
Sheridan	1,591	1,545	46	2.9	1,652	1,603	49	3.0
Sherman	3,770	3,615	155	4.1	3,857	3,706	151	3.9
Smith	2,236	2,127	109	4.9	2,264	2,166	98	4.3
Stafford	2,259	2,138	121	5.4	2,268	2,153	115	5.1
Stanton	1,176	1,136	40	3.4	1,224	1,181	43	3.5
Stevens	2,361	2,245	116	4.9	2,368	2,258	110	4.6
Sumner	11,601	10,564	1,037	8.9	11,382	10,364	1,018	8.9
Thomas	4,278	4,114	164	3.8	4,243	4,070	173	4.1
Trego	1,880	1,808	72	3.8	1,897	1,827	70	3.7
Wabaunsee	3,743	3,464	279	7.5	3,738	3,496	242	6.5
Wallace	914	857	57	6.2	927	877	50	5.4
Washington	3,449	3,277	172	5.0	3,401	3,242	159	4.7
Wichita	1,271	1,227	44	3.5	1,227	1,183	44	3.6
Wilson	5,276	4,691	585	11.1	5,052	4,522	530	10.5
Woodson	1,781	1,625	156	8.8	1,748	1,609	139	8.0
Wyandotte	70,156	62,452	7,704	11.0	69,259	62,036	7,223	10.4
<b>Kansas</b>	<b>1,508,422</b>	<b>1,401,609</b>	<b>106,813</b>	<b>7.1</b>	<b>1,502,313</b>	<b>1,396,558</b>	<b>105,755</b>	<b>7.0</b>

Source: U.S. Department of Labor, Bureau of Labor Statistics, <http://www.bls.gov/lau/home.htm> (accessed April 27, 2011).

The Bureau of Labor Statistics (BLS) has revised the methods for calculating employment and unemployment estimates; therefore these data are not comparable to data published prior to 2003.

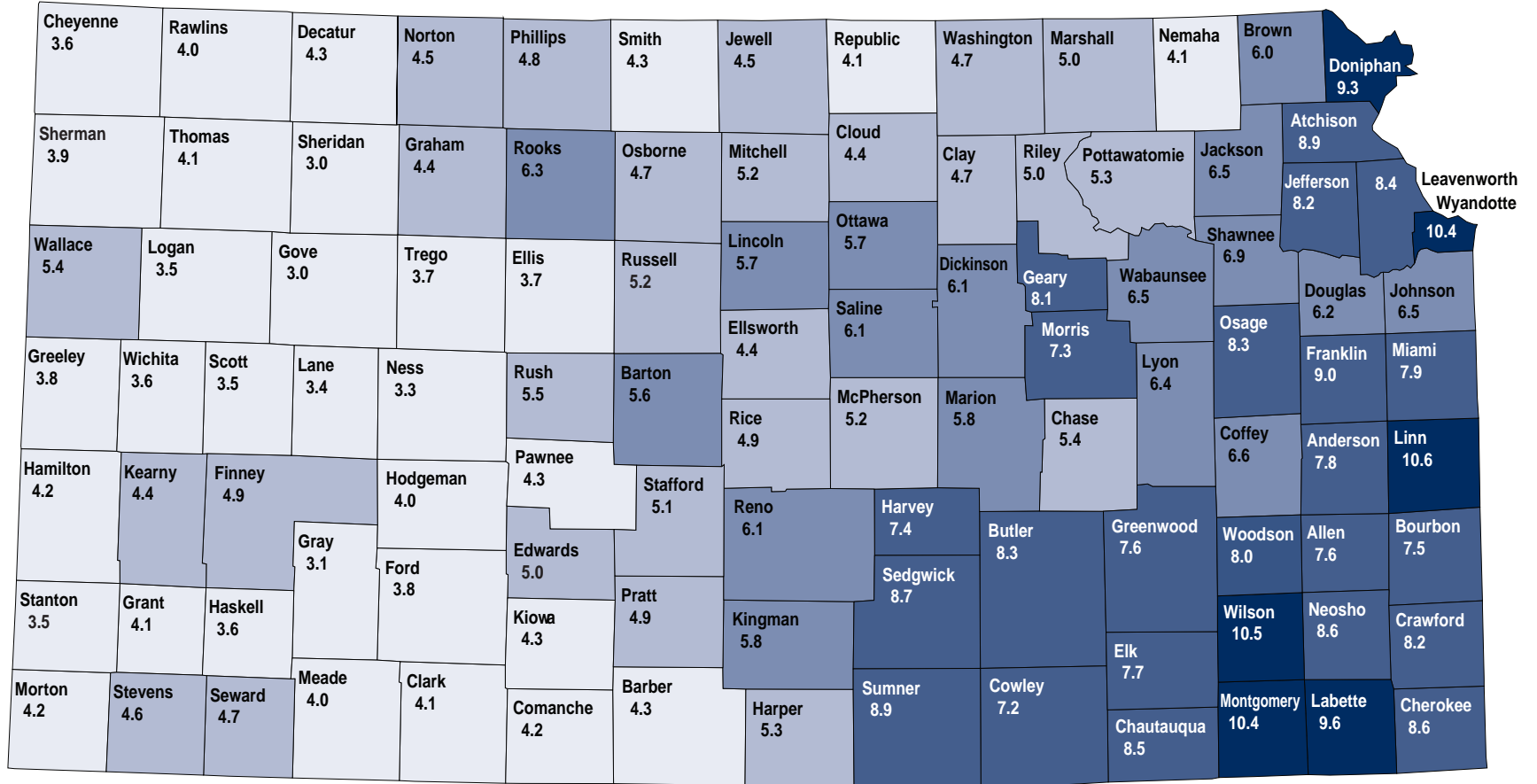
r - revised

**Civilian Labor Force Estimates for Kansas, by Metropolitan Statistical Area,  
Micropolitan Area, and City, 2010**

<b>Area</b>	<b>Labor Force</b>	<b>Employed</b>	<b>Unemployed</b>	<b>Unemployment Rate</b>
<b>Metropolitan Statistical Area</b>				
Kansas City, Kansas MSA (Franklin, Johnson, Leavenworth, Linn, Miami, and Wyandotte Counties)	430,326	398,305	32,021	7.4
Lawrence MSA (Douglas County)	63,316	59,394	3,922	6.2
Manhattan Micropolitan (Geary, Pottawatomie, and Riley Counties)	64,468	60,776	3,692	5.7
Topeka MSA (Jackson, Jefferson, Osage, Shawnee, and Wabaunsee Counties)	124,147	115,371	8,776	7.1
Wichita MSA (Butler, Harvey, Sedgwick, and Sumner Counties)	314,416	287,416	27,000	8.6
<b>Micropolitan Area</b>				
Atchison Micropolitan (Atchison County)	8,504	7,743	761	8.9
Coffeyville Micropolitan (Montgomery County)	18,364	16,459	1,905	10.4
Dodge City Micropolitan (Ford County)	19,686	18,946	740	3.8
Emporia Micropolitan (Chase and Lyon Counties)	19,933	18,669	1,264	6.3
Garden City Micropolitan (Finney County)	20,056	19,074	982	4.9
Great Bend Micropolitan (Barton County)	15,973	15,078	895	5.6
Hays Micropolitan (Ellis County)	18,784	18,090	694	3.7
Hutchinson Micropolitan (Reno County)	34,751	32,640	2,111	6.1
Liberal Micropolitan (Seward County)	11,017	10,498	519	4.7
McPherson Micropolitan (McPherson County)	16,619	15,759	860	5.2
Parsons Micropolitan (Labette County)	11,214	10,135	1,079	9.6
Pittsburg Micropolitan (Crawford County)	20,327	18,651	1,676	8.2
Salina Micropolitan (Ottawa and Saline Counties)	34,193	32,107	2,086	6.1
Winfield Micropolitan (Cowley County)	18,501	17,168	1,333	7.2
<b>City</b>				
Dodge City	15,171	14,524	647	4.3
Emporia	13,426	12,408	1,028	7.7
Garden City	14,059	13,312	747	5.3
Hutchinson	21,122	19,554	1,568	7.4
Kansas City	64,251	57,344	6,907	10.8
Lawrence	51,156	47,779	3,377	6.6
Leavenworth	14,736	13,132	1,604	10.9
Leawood	15,602	14,876	726	4.7
Lenexa	28,054	26,016	2,038	7.3
Manhattan	30,000	28,551	1,449	4.8
Olathe	61,568	57,457	4,111	6.7
Overland Park	96,789	90,363	6,426	6.6
Salina	26,155	24,473	1,682	6.4
Shawnee	32,185	30,423	1,762	5.5
Topeka	67,111	61,654	5,457	8.1
Wichita	192,988	174,902	18,086	9.4

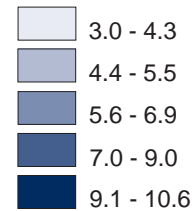
Source: U.S. Department of Labor, Bureau of Labor Statistics, Local Area Unemployment Statistics, <http://www.bls.gov/lau/> (accessed June 7, 2011).

## Average Unemployment Rate in Kansas, by County 2010



Source: Institute for Policy & Social Research; data from the U.S. Department of Labor, Bureau of Labor Statistics.

### Unemployment Rate



**Kansas: 7.0**

**Unemployment Rates in Kansas, by County  
2005-2010, Annual Averages**

<b>County</b>	<b>2005</b>	<b>2006</b>	<b>2007</b>	<b>2008</b>	<b>2009</b>	<b>2010</b>
Allen	5.4	4.2	4.0	4.5	8.1	7.6
Anderson	6.0	4.8	4.6	4.7	7.9	7.8
Atchison	5.6	4.8	4.5	4.5	9.5	8.9
Barber	3.7	3.3	3.1	3.2	4.6	4.3
Barton	4.1	3.5	3.4	3.3	5.8	5.6
Bourbon	5.1	3.9	4.3	4.8	7.2	7.5
Brown	4.9	3.9	4.0	4.3	5.8	6.0
Butler	5.6	4.6	4.0	4.3	7.6	8.3
Chase	4.2	4.0	3.9	4.1	5.5	5.4
Chautauqua	5.3	5.1	4.6	4.5	9.0	8.5
Cherokee	6.5	5.1	4.8	5.1	8.7	8.6
Cheyenne	4.6	3.5	3.4	3.1	3.6	3.6
Clark	3.6	3.2	2.9	3.1	3.8	4.1
Clay	4.1	3.4	3.3	3.4	4.6	4.7
Cloud	3.8	3.4	3.5	3.6	4.6	4.4
Coffey	5.7	4.9	4.4	4.7	6.0	6.6
Comanche	3.0	2.8	3.0	3.2	3.6	4.2
Cowley	5.6	4.3	3.9	4.4	7.2	7.2
Crawford	5.8	5.1	4.8	5.2	8.8	8.2
Decatur	3.4	3.3	3.0	3.0	3.8	4.3
Dickinson	4.6	4.0	3.8	3.9	5.4	6.1
Doniphan	6.4	5.0	4.7	5.5	10.7	9.3
Douglas	4.0	3.8	3.8	4.1	5.9	6.2
Edwards	3.4	3.0	3.4	2.8	4.4	5.0
Elk	5.6	4.8	5.6	5.6	8.4	7.7
Ellis	3.4	2.8	2.7	3.0	4.0	3.7
Ellsworth	4.0	3.3	3.3	3.3	4.3	4.4
Finney	4.2	3.5	3.3	3.5	4.5	4.9
Ford	3.6	3.2	3.1	3.0	3.6	3.8
Franklin	5.8	5.2	5.0	5.5	9.4	9.0
Geary	6.0	5.3	4.3	4.6	7.6	8.1
Gove	3.1	2.8	2.9	2.7	3.0	3.0
Graham	3.6	3.2	3.0	3.3	4.5	4.4
Grant	3.6	2.9	2.7	2.8	4.0	4.1
Gray	3.0	2.9	2.6	2.5	3.1	3.1
Greeley	4.2	3.1	3.2	3.7	3.9	3.8
Greenwood	5.4	4.6	4.5	5.2	6.9	7.6
Hamilton	3.4	3.2	3.4	3.4	4.0	4.2
Harper	3.7	3.2	3.0	3.1	5.2	5.3
Harvey	4.6	4.4	3.6	3.9	7.3	7.4
Haskell	3.2	2.9	2.8	2.7	3.5	3.6
Hodgeman	4.0	3.5	3.9	3.3	4.1	4.0
Jackson	5.9	5.4	5.4	5.7	7.2	6.5
Jefferson	5.2	4.8	4.9	5.2	7.8	8.2
Jewell	3.2	3.1	2.8	3.1	4.3	4.5
Johnson	4.6	4.1	4.0	4.5	6.7	6.5
Kearny	4.3	3.8	3.2	3.3	4.6	4.4
Kingman	4.3	3.7	3.3	3.3	5.8	5.8
Kiowa	3.5	2.9	4.6	3.4	3.6	4.3
Labette	6.6	5.3	4.8	5.2	8.8	9.6
Lane	3.6	3.5	3.5	3.7	3.4	3.4
Leavenworth	6.2	5.6	5.3	5.7	8.3	8.4
Lincoln	4.3	3.5	3.8	3.6	5.6	5.7
Linn	7.4	6.2	6.3	6.6	11.5	10.6
Logan	3.6	3.1	2.8	2.7	3.4	3.5
Lyon	4.6	4.2	4.0	5.8	6.3	6.4

**Unemployment Rates in Kansas, by County  
2005-2010, Annual Averages**

<b>County</b>	<b>2005</b>	<b>2006</b>	<b>2007</b>	<b>2008</b>	<b>2009</b>	<b>2010</b>
McPherson	3.8	3.4	3.4	3.5	5.1	5.2
Marion	4.3	3.9	3.6	3.6	5.7	5.8
Marshall	3.8	3.5	3.1	3.7	5.8	5.0
Meade	3.7	3.1	2.8	2.9	3.9	4.0
Miami	5.2	4.6	4.6	5.0	8.4	7.9
Mitchell	3.8	3.5	3.4	3.2	4.8	5.2
Montgomery	5.9	4.6	4.8	5.5	10.1	10.4
Morris	5.1	4.4	4.7	4.8	7.2	7.3
Morton	3.5	2.8	2.7	2.7	4.3	4.2
Nemaha	3.7	3.3	3.0	3.1	4.2	4.1
Neosho	5.1	3.9	4.0	4.9	8.7	8.6
Ness	3.3	2.8	2.9	3.0	4.1	3.3
Norton	3.7	3.3	3.2	3.2	4.5	4.5
Osage	6.3	5.5	5.3	5.9	8.0	8.3
Osborne	3.9	3.5	3.7	3.4	4.6	4.7
Ottawa	4.6	3.5	3.7	3.6	5.7	5.7
Pawnee	3.8	3.3	3.0	3.1	3.9	4.3
Phillips	3.7	3.1	2.9	4.2	6.4	4.8
Pottawatomie	4.1	3.3	3.2	3.5	5.9	5.3
Pratt	3.6	3.0	3.0	3.4	5.1	4.9
Rawlins	4.0	3.3	3.5	3.4	4.0	4.0
Reno	5.0	4.5	4.1	4.0	6.0	6.1
Republic	4.1	3.6	3.1	3.1	4.3	4.1
Rice	4.7	4.1	3.7	3.7	5.2	4.9
Riley	3.8	3.3	3.0	3.4	4.6	5.0
Rooks	4.3	3.7	3.6	4.5	6.9	6.3
Rush	4.1	3.6	3.6	3.8	5.8	5.5
Russell	4.7	3.8	3.5	3.7	5.1	5.2
Saline	4.5	3.8	3.5	3.8	5.7	6.1
Scott	3.4	2.8	2.7	2.6	3.1	3.5
Sedgwick	5.5	4.6	4.1	4.4	8.7	8.7
Seward	4.0	3.3	3.3	3.1	5.0	4.7
Shawnee	5.5	4.8	4.5	4.9	6.7	6.9
Sheridan	2.9	2.9	2.7	2.6	2.9	3.0
Sherman	3.4	2.9	2.8	3.1	4.1	3.9
Smith	3.7	3.3	3.1	3.9	4.9	4.3
Stafford	4.0	3.6	3.6	3.6	5.4	5.1
Stanton	3.0	2.8	2.9	3.2	3.4	3.5
Stevens	4.1	3.4	3.2	3.3	4.9	4.6
Sumner	6.0	4.7	4.3	4.5	8.9	8.9
Thomas	3.2	2.9	2.9	3.0	3.8	4.1
Trego	3.4	3.0	3.2	3.0	3.8	3.7
Wabaunsee	4.6	3.8	3.9	4.4	7.5	6.5
Wallace	3.0	3.1	2.8	4.7	6.2	5.4
Washington	3.9	3.5	3.3	3.6	5.0	4.7
Wichita	3.6	3.0	2.9	3.1	3.5	3.6
Wilson	4.5	3.7	3.6	5.5	11.1	10.5
Woodson	6.4	5.0	5.1	5.5	8.8	8.0
Wyandotte	8.8	7.6	7.4	7.9	11.0	10.4
<b>Kansas</b>	<b>5.1</b>	<b>4.4</b>	<b>4.1</b>	<b>4.5</b>	<b>7.1</b>	<b>7.0</b>

Source: Kansas Department of Labor, Kansas Labor Market Information Services in conjunction with U.S. Department of Labor, Bureau of Labor Statistics.

Data revised annually.

**Unemployment Rates in Kansas, by Metropolitan Statistical Area and City  
2005-2010, Annual Averages**

<b>Area</b>	<b>2005</b>	<b>2006</b>	<b>2007</b>	<b>2008</b>	<b>2009</b>	<b>2010</b>
<b>Metropolitan Statistical Area</b>						
Kansas City, Kansas MSA (Franklin, Johnson, Leavenworth, Linn, Miami, and Wyandotte Counties)	5.6	4.9	4.7	5.2	7.7	7.4
Lawrence MSA (Douglas County)	4.0	3.8	3.8	4.1	5.9	6.2
Manhattan MSA (Geary, Pottawatomie, and Riley Counties)	4.3	3.7	3.3	3.7	5.5	5.7
Topeka MSA (Jackson, Jefferson, Osage, Shawnee, and Wabaunsee Counties)	5.6	4.8	4.6	5.1	7.0	7.1
Wichita MSA (Butler, Harvey, Sedgwick, and Sumner Counties)	5.5	4.6	4.1	4.4	8.5	8.6
<b>City</b>						
Dodge City	4.1	3.6	3.5	3.4	4.1	4.3
Emporia	5.5	5.0	4.8	6.9	7.5	7.7
Garden City	4.6	3.8	3.6	3.8	4.9	5.3
Hutchinson	6.2	5.5	5.1	5.0	7.3	7.4
Kansas City	9.1	7.9	7.6	8.2	11.3	10.8
Lawrence	4.3	4.1	4.0	4.4	6.3	6.6
Leavenworth	8.2	7.4	6.9	7.5	10.7	10.9
Leawood	3.3	2.9	2.8	3.2	4.8	4.7
Lenexa	5.2	4.6	4.4	5.1	7.5	7.3
Manhattan	3.7	3.2	3.0	3.3	4.4	4.8
Olathe	4.8	4.2	4.1	4.7	6.9	6.7
Overland Park	4.7	4.2	4.0	4.6	6.9	6.6
Salina	4.7	4.0	3.6	4.0	5.9	6.4
Shawnee	3.9	3.5	3.3	3.8	5.7	5.5
Topeka	6.5	5.7	5.3	5.8	7.9	8.1
Wichita	6.0	5.0	4.5	4.8	9.3	9.4

Source: Kansas Department of Labor, Kansas Labor Market Information Services in conjunction with U.S. Department of Labor, Bureau of Labor Statistics.

Data revised annually.

**Kansas Labor Market Summary  
2009 and 2010**

<b>Labor Market Category</b>	<b>2009 Average (1,000s)</b>	<b>2010 Average (1,000s)</b>	<b>Percent Change 2009-2010</b>
<b>Place of Residence Data</b>			
Civilian Labor Force	1,508.4	1,502.3	-0.4
Employment	1,401.6	1,396.6	-0.4
Unemployment	106.8	105.8	-1.0
Unemployment Rate	7.1	7.0	-1.4
<b>Place of Work Data by Industry</b>			
Total Nonfarm	1,343.1	1,323.0	-1.5
Total Private	1,081.8	1,061.1	-1.9
Goods Producing	232.8	221.4	-4.9
Natural Resources and Mining	8.1	8.3	2.5
Construction	57.5	53.5	-7.0
Manufacturing	167.2	159.6	-4.5
Durable Goods	104.1	97.0	-6.8
Machinery Manufacturing	16.2	15.7	-3.1
Electrical Equipment Manufacturing	3.5	3.2	-8.6
Transportation Equipment Manufacturing	44.9	41.0	-8.7
Aerospace Product and Parts Manufacturing	37.5	32.7	-12.8
Non-Durable Goods	63.1	62.6	-0.8
Food Manufacturing	30.5	30.4	-0.3
Animal Slaughtering and Processing	17.9	17.7	-1.1
Service-Providing	1,110.3	1,101.7	-0.8
Private Service-Providing	849.0	839.7	-1.1
Trade, Transportation, and Utilities	255.0	251.0	-1.6
Wholesale Trade	59.9	58.2	-2.8
Retail Trade	142.1	140.4	-1.2
Motor Vehicle and Parts Dealers	17.1	17.1	0.0
Grocery Stores	22.6	21.9	-3.1
General Merchandise Stores	32.3	32.0	-0.9
Transport, Warehouse, Utilities	53.0	52.4	-1.1
Utilities	7.7	7.8	1.3
Elec. Pwr. Gen. Transmission and Distribution	5.7	5.7	0.0
Transport and Warehousing	45.3	44.6	-1.5
Truck Transportation	15.9	15.4	-3.1
Information	35.1	31.2	-11.1
Telecommunications	21.3	18.3	-14.1
Financial Activities	71.6	70.8	-1.1
Finance and Insurance	57.3	56.8	-0.9
Credit Intermediation and Related Activities	27.0	26.3	-2.6
Insurance Carriers	24.8	25.2	1.6
Real Estate and Rental and Leasing	14.3	14.1	-1.4

**Kansas Labor Market Summary  
2009 and 2010**

<b>Labor Market Category</b>	<b>2009 Average (1,000s)</b>	<b>2010 Average (1,000s)</b>	<b>Percent Change 2009-2010</b>
Professional and Business Services	140.8	141.8	0.7
Professional, Scientific, and Technical Services	60.4	59.9	-0.8
Management of Companies and Enterprises	13.2	13.5	2.3
Administrative and Waste Services	67.1	68.4	1.9
Educational and Health Services	180.1	180.4	0.2
Health Care and Social Assistance	161.9	161.6	-0.2
Hospitals	44.4	44.3	-0.2
Leisure and Hospitality	114.1	113.1	-0.9
Arts, Entertainment, and Recreation	13.1	13.1	0.0
Amusement, Gambling, and Recreation	10.4	10.4	0.0
Accommodation and Food Services	101.0	100.0	-1.0
Food Services and Drinking Places	91.2	90.3	-1.0
Other Services	52.4	51.5	-1.7
Government	261.3	262.0	0.3
Federal Government	25.9	28.0	8.1
State Government	53.2	53.2	0.0
Local Government	182.2	180.8	-0.8

Source: Kansas Department of Labor, Labor Market Information Services in conjunction with U.S. Department of Labor, Bureau of Labor Statistics.

Employment estimates by industry based on the North American Industry Classification System.

Average employment statistics are actual, not seasonally adjusted.

Data revised annually.

**Kansas Labor Market Summary, by Metropolitan Area  
2009 and 2010**

<b>Metropolitan Area and Labor Market Category</b>	<b>2009 Average</b>	<b>2010 Average</b>	<b>Percent Change 2009-2010</b>
<b>Kansas City MSA</b>			
<b>Civilian Labor Force - Place of Work Data</b>			
Civilian Labor Force	443,483	430,326	-3.0
Employment	411,456	398,305	-3.2
Unemployment	32,027	32,021	0.0
Unemployment Rate	7.2	7.4	2.8
<b>Nonfarm Employment by Industry</b>			
Total Nonfarm	430,100	424,200	-1.4
Total Private	371,000	364,900	-1.6
Goods Producing	51,700	50,300	-2.7
Natural Resources and Construction	18,000	16,200	-10.0
Manufacturing	33,700	34,100	1.2
Durable Goods	20,100	20,600	2.5
Non-Durable Goods	13,700	13,500	-1.5
Service-Providing	378,400	373,900	-1.2
Private Service-Providing	319,200	314,600	-1.4
Trade, Transportation, and Utilities	92,100	90,800	-1.4
Wholesale Trade	24,300	23,400	-3.7
Retail Trade	45,300	45,100	-0.4
Transportation, Warehouse, Utilities	22,500	22,300	-0.9
Information	19,800	16,800	-15.2
Financial Activities	32,000	31,300	-2.2
Professional and Business Services	67,800	68,000	0.3
Educational and Health Services	56,500	57,500	1.8
Leisure and Hospitality	34,900	34,400	-1.4
Other Services	16,200	15,900	-1.9
Government	59,200	59,300	0.2
<b>Lawrence MSA</b>			
<b>Civilian Labor Force - Place of Work Data</b>			
Civilian Labor Force	62,827	63,316	0.8
Employment	59,344	59,394	0.1
Unemployment	3,483	3,922	12.6
Unemployment Rate	5.5	6.2	12.7
<b>Nonfarm Employment by Industry</b>			
Total Nonfarm	50,700	50,500	-0.4
Total Private	35,800	34,900	-2.5
Goods Producing	5,600	5,300	-5.4
Service-Providing	45,100	45,200	0.2
Private Service-Providing	30,200	29,600	-2.0
Trade, Transportation, and Utilities	7,900	7,800	-1.3
Retail Trade	5,700	5,700	0.0
Professional and Business Services	4,800	4,800	0.0
Educational and Health Services	5,500	5,400	-1.8
Leisure and Hospitality	6,200	6,100	-1.6
Government	14,900	15,600	4.7

**Kansas Labor Market Summary, by Metropolitan Area  
2009 and 2010**

<b>Metropolitan Area and Labor Market Category</b>	<b>2009 Average</b>	<b>2010 Average</b>	<b>Percent Change 2009-2010</b>
<b>Manhattan MSA</b>			
<b>Civilian Labor Force - Place of Work Data</b>			
Civilian Labor Force	62,813	64,468	2.6
Employment	59,606	60,776	2.0
Unemployment	3,207	3,692	15.1
Unemployment Rate	5.1	5.7	11.8
<b>Nonfarm Employment by Industry</b>			
Total Nonfarm	55,100	56,200	2.0
Total Private	36,500	36,700	0.5
Goods Producing	5,700	6,100	7.0
Service-Providing	49,400	50,100	1.4
Private Service-Providing	30,800	30,600	-0.6
Government	18,600	19,500	4.8
<b>Topeka MSA</b>			
<b>Civilian Labor Force - Place of Work Data</b>			
Civilian Labor Force	122,717	124,147	1.2
Employment	114,550	115,371	0.7
Unemployment	8,167	8,776	7.5
Unemployment Rate	6.7	7.1	6.0
<b>Nonfarm Employment by Industry</b>			
Total Nonfarm	109,000	108,700	-0.3
Total Private	80,700	80,000	-0.9
Goods Producing	12,500	12,000	-4.0
Natural Resources and Construction	5,400	5,000	-7.4
Manufacturing	7,100	7,000	-1.4
Non-Durable Goods	5,400	5,400	0.0
Service-Providing	96,500	96,800	0.3
Private Service-Providing	68,200	68,100	-0.1
Trade, Transportation, and Utilities	18,300	18,000	-1.6
Wholesale Trade	3,400	3,300	-2.9
Retail Trade	10,500	10,400	-1.0
Transportation, Warehouse, Utilities	4,400	4,300	-2.3
Information	2,000	1,900	-5.0
Financial Activities	7,100	7,000	-1.4
Professional and Business Services	9,300	9,800	5.4
Educational and Health Services	17,500	17,500	0.0
Leisure and Hospitality	9,000	9,000	0.0
Other Services	4,900	4,900	0.0
Government	28,300	28,700	1.4

**Kansas Labor Market Summary, by Metropolitan Area  
2009 and 2010**

Metropolitan Area and Labor Market Category	2009 Average	2010 Average	Percent Change 2009-2010
<b>Wichita MSA</b>			
<b>Civilian Labor Force - Place of Work Data</b>			
Civilian Labor Force	319,676	314,416	-1.6
Employment	293,880	287,416	-2.2
Unemployment	25,796	27,000	4.7
Unemployment Rate	8.1	8.6	6.2
<b>Nonfarm Employment by Industry</b>			
Total Nonfarm	292,400	283,600	-3.0
Total Private	250,800	241,800	-3.6
Goods Producing	73,000	66,900	-8.4
Natural Resources and Construction	15,200	14,500	-4.6
Manufacturing	57,900	52,300	-9.7
Durable Goods	50,500	45,100	-10.7
Service-Providing	219,300	216,800	-1.1
Private Service-Providing	177,800	174,900	-1.6
Trade, Transportation, and Utilities	50,300	49,100	-2.4
Wholesale Trade	10,900	10,800	-0.9
Retail Trade	31,100	30,300	-2.6
Transportation, Warehouse, Utilities	8,300	8,000	-3.6
Information	5,200	4,700	-9.6
Financial Activities	11,300	10,900	-3.5
Professional and Business Services	28,700	29,000	1.0
Educational and Health Services	43,900	43,400	-1.1
Leisure and Hospitality	27,700	27,100	-2.2
Other Services	10,700	10,700	0.0
Government	41,500	41,800	0.7

Source: Kansas Department of Labor, Labor Market Information Services in conjunction with U.S. Department of Labor, Bureau of Labor Statistics.

Employment estimates by industry based on the North American Industry Classification System.

Average employment statistics are actual, not seasonally adjusted.

Data revised annually.

**Mid-March Employment in Kansas, by Industry and County, 2008**

<b>County</b>	<b>Total</b>	<b>FFHAS</b>	<b>Mining</b>	<b>Utilities</b>	<b>Construction</b>	<b>Manufacturing</b>	<b>Wholesale Trade</b>	<b>Retail Trade</b>	<b>Transportation</b>	<b>Information</b>	<b>Finance and Insurance</b>
Allen	4,708	a	c	16	161	1,956	c	619	65	85	103
Anderson	1,708	-	23	-	89	275	71	432	63	a	b
Atchison	6,878	-	30	b	281	2,083	390	815	b	b	c
Barber	1,452	2	193	13	b	c	b	254	b	b	75
Barton	11,508	8	696	c	g	1,774	599	1,513	258	179	470
Bourbon	5,516	-	a	a	228	1,182	489	755	b	b	680
Brown	3,665	-	-	b	92	477	122	368	121	b	161
Butler	13,925	16	97	77	1,306	1,642	411	2,176	443	b	496
Chase	420	a	b	-	a	b	a	b	b	a	23
Chautauqua	551	a	68	a	20	b	a	100	a	a	26
Cherokee	5,590	-	b	b	875	2,150	170	517	116	a	133
Cheyenne	556	a	a	a	a	b	c	80	a	-	b
Clark	758	-	a	-	a	b	a	47	a	-	b
Clay	2,516	a	-	a	220	e	169	419	99	45	98
Cloud	3,101	a	a	a	125	e	255	538	51	110	c
Coffey	h	a	b	g	66	c	b	374	100	a	115
Comanche	461	a	8	-	b	67	a	55	a	a	36
Cowley	11,924	b	61	b	334	3,585	269	1,621	120	170	406
Crawford	15,034	a	35	75	496	2,982	643	2,020	c	559	355
Decatur	725	a	a	a	b	b	106	123	a	b	37
Dickinson	5,338	26	a	68	251	1,120	268	823	357	b	173
Doniphan	1,457	-	-	a	b	761	148	b	68	a	65
Douglas	38,825	a	b	c	2,272	3,715	791	6,313	1,229	3,318	110
Edwards	675	a	a	a	a	181	83	b	a	a	b
Elk	339	a	26	-	27	b	a	b	a	5	27
Ellis	12,759	2	465	c	600	1,124	526	2,238	247	400	764
Ellsworth	1,803	-	b	a	b	427	b	176	b	54	84
Finney	14,209	52	612	e	682	h	748	2,361	467	221	499
Ford	14,468	5	-	149	362	6,211	901	1,674	345	378	311
Franklin	9,497	-	80	a	418	1,159	193	1,172	1,903	67	195
Geary	8,806	a	-	b	324	f	c	1,309	452	259	337
Gove	788	a	a	a	37	124	b	102	a	a	b
Graham	736	a	a	a	84	b	b	113	a	a	b
Grant	2,330	a	397	c	281	151	c	286	82	c	115
Gray	1,358	b	-	a	198	b	158	171	55	24	66
Greeley	372	a	a	a	a	a	a	b	-	a	b
Greenwood	1,331	-	c	a	76	85	85	217	c	b	b
Hamilton	581	a	a	a	a	-	110	85	c	a	b

**Mid-March Employment in Kansas, by Industry and County, 2008**

<b>County</b>	<b>Total</b>	<b>FFHAS</b>	<b>Mining</b>	<b>Utilities</b>	<b>Construction</b>	<b>Manufacturing</b>	<b>Wholesale Trade</b>	<b>Retail Trade</b>	<b>Transportation</b>	<b>Information</b>	<b>Finance and Insurance</b>
Harper	1,683	a	29	a	39	443	b	218	97	a	96
Harvey	12,750	a	b	b	652	3,696	230	1,376	f	78	e
Haskell	766	a	b	-	31	43	c	59	b	a	b
Hodgeman	254	a	a	a	a	-	b	32	a	a	47
Jackson	2,924	-	a	-	208	224	110	385	24	b	105
Jefferson	2,386	a	c	b	547	242	34	343	46	a	b
Jewell	521	-	-	b	a	a	40	92	23	a	41
Johnson	317,238	a	e	514	16,189	22,024	196	36,974	1,316	2,923	266
Kearny	f	b	a	a	a	-	b	47	46	a	b
Kingman	1,957	5	c	a	135	372	201	232	b	29	132
Kiowa	748	a	a	-	53	-	119	b	48	b	26
Labette	8,915	-	a	54	322	2,330	215	1,003	311	99	267
Lane	331	13	a	b	b	a	b	44	14	-	b
Leavenworth	13,695	17	a	59	1,269	1,054	63	2,061	372	586	106
Lincoln	640	a	-	-	45	b	86	b	12	a	53
Linn	g	3	43	e	173	82	18	258	b	30	69
Logan	825	14	a	a	a	a	b	c	18	a	b
Lyon	13,590	-	35	62	771	4,168	501	1,999	324	273	346
McPherson	13,490	3	140	b	689	4,186	165	1,382	421	151	717
Marion	2,845	-	b	a	79	282	192	344	b	31	113
Marshall	4,078	-	a	31	158	1,264	192	725	96	c	198
Meade	877	a	a	b	105	a	c	154	b	b	b
Miami	7,097	23	83	b	883	542	142	1,093	305	65	323
Mitchell	2,635	a	-	a	106	489	223	428	63	73	129
Montgomery	16,649	a	c	b	767	5,273	f	1,900	g	174	424
Morris	1,288	-	b	b	70	186	b	216	a	b	b
Morton	942	-	82	-	9	b	b	160	a	165	47
Nemaha	3,992	-	a	a	198	1,200	c	546	333	b	201
Neosho	6,409	b	486	-	321	1,553	262	930	83	90	231
Ness	1,000	a	229	a	a	43	65	115	77	a	54
Norton	1,811	a	a	b	88	c	83	225	33	c	93
Osage	3,403	-	a	-	151	e	79	363	73	a	116
Osborne	1,223	a	14	-	17	c	135	214	99	a	80
Ottawa	1,030	a	-	-	35	c	195	96	a	a	61
Pawnee	2,277	a	a	-	84	b	b	229	22	b	b
Phillips	1,983	-	b	a	62	222	c	253	151	b	114

**Mid-March Employment in Kansas, by Industry and County, 2008**

County	Total	FFHAS	Mining	Utilities	Construction	Manufacturing	Wholesale Trade	Retail Trade	Transportation	Information	Finance and Insurance
Pottawatomie	7,925	a	a	e	793	1,520	553	1,341	210	c	211
Pratt	3,963	14	475	b	109	126	193	813	b	61	167
Rawlins	571	a	a	a	a	b	71	114	8	a	44
Reno	23,138	a	92	134	1,171	3,651	881	3,776	727	380	973
Republic	1,413	-	a	a	b	179	183	232	20	a	93
Rice	2,379	a	127	a	83	383	141	276	b	23	145
Riley	21,738	b	a	b	1,490	958	388	4,147	111	804	833
Rooks	1,439	a	83	a	93	234	143	222	b	a	b
Rush	854	a	b	-	12	e	99	67	50	b	44
Russell	1,976	a	284	-	105	c	142	269	57	110	78
Saline	28,331	a	a	b	1,299	5,985	138	4,240	1,392	521	114
Scott	1,266	a	a	c	b	a	c	238	46	a	97
Sedgwick	239,613	6	139	854	14,969	56,803	104	28,125	7,820	6,225	859
Seward	9,808	-	621	b	342	h	396	1,363	629	c	233
Shawnee	76,175	a	c	1,180	4,827	6,247	275	10,482	2,087	2,382	524
Sheridan	619	a	-	a	b	b	c	91	49	a	b
Sherman	2,083	a	a	a	72	c	176	412	73	b	124
Smith	1,095	a	a	a	a	184	103	223	3	a	b
Stafford	661	a	24	a	21	b	23	83	36	-	55
Stanton	451	a	-	a	a	a	c	83	a	a	31
Stevens	1,028	a	b	a	50	a	90	c	126	a	b
Sumner	5,120	a	c	b	183	1,165	169	669	296	c	269
Thomas	2,997	a	-	b	189	51	361	649	91	c	143
Trego	781	a	b	b	29	31	34	139	34	15	b
Wabaunsee	955	-	b	-	112	124	37	164	b	a	57
Wallace	326	a	-	a	a	a	45	b	a	a	b
Washington	1,682	9	a	a	124	152	183	241	b	a	72
Wichita	437	a	-	a	a	b	70	85	24	a	12
Wilson	4,139	a	124	b	f	1,462	22	267	c	a	122
Woodson	552	a	60	a	b	22	43	84	a	a	b
Wyandotte	65,122	a	a	a	4,621	10,410	706	7,096	7,651	638	105
Statewide	13,545	-	169	-	e	-	585	a	-	a	782
<b>Kansas</b>	<b>1,185,777</b>	<b>708</b>	<b>11,070</b>	<b>7,314</b>	<b>68,070</b>	<b>183,411</b>	<b>60,531</b>	<b>151,317</b>	<b>47,620</b>	<b>50,125</b>	<b>61,211</b>

Source: U.S. Census Bureau, County Business Patterns, <http://www.census.gov/econ/cbp/> (accessed August 4, 2010).

Data suppression is based on employment size. Suppression codes: a=0-19 employees; b=20-99 employees; c=100-249 employees; e=250-499 employees; f=500-999 employees; g=1,000-2,499 employees; and h=2,500-4,999 employees.

Single dash (-) indicates not available or represents zero.

Industry Description: FFHAS=Forestry, fishing, hunting, and agriculture support; Transportation=Transportation and warehousing.

**Mid-March Employment in Kansas, by Industry and County, 2008**

<b>County</b>	<b>Real Estate</b>	<b>Prof. Services</b>	<b>Management</b>	<b>Admin. Support</b>	<b>Educational Services</b>	<b>Health Care</b>	<b>Arts and Recreation</b>	<b>Accommod. and Food Service</b>	<b>Other Services</b>	<b>Unclassified</b>
Allen	41	119	a	b	a	653	23	393	c	-
Anderson	a	b	-	a	a	362	-	170	53	-
Atchison	57	72	c	85	792	840	b	528	470	a
Barber	10	b	-	b	a	260	a	128	85	a
Barton	115	324	b	395	b	2,255	101	846	592	a
Bourbon	72	c	c	17	a	1,046	a	468	193	-
Brown	a	56	a	b	b	782	f	363	76	-
Butler	139	453	b	300	b	3,337	206	1,964	684	a
Chase	a	a	-	-	-	b	a	b	31	a
Chautauqua	-	a	-	a	-	c	a	72	21	-
Cherokee	a	79	b	108	-	713	51	305	200	1
Cheyenne	a	a	-	a	-	164	a	40	24	-
Clark	a	b	a	a	-	521	a	23	b	-
Clay	a	58	-	33	-	577	b	154	171	-
Cloud	a	74	-	107	a	723	27	364	201	-
Coffey	a	b	-	a	-	498	a	166	b	-
Comanche	-	9	a	a	a	145	a	61	b	-
Cowley	75	185	a	f	e	2,202	57	1,025	463	12
Crawford	123	551	283	f	619	2,899	108	1,521	721	-
Decatur	8	b	-	a	-	c	a	75	b	-
Dickinson	a	125	c	58	b	891	108	439	270	a
Doniphan	a	a	a	a	a	74	-	b	64	-
Douglas	812	212	e	148	1,201	5,300	534	6,118	195	3
Edwards	a	13	a	a	a	c	a	b	b	-
Elk	a	14	-	a	-	a	-	45	b	-
Ellis	114	301	b	150	93	3,029	99	1,887	499	4
Ellsworth	2	72	a	a	-	502	a	119	79	a
Finney	165	353	a	228	b	2,013	183	1,289	616	-
Ford	102	465	b	433	b	1,334	108	1,033	563	a
Franklin	57	268	-	188	f	1,697	29	842	379	a
Geary	154	226	c	102	b	g	c	1,517	442	-
Gove	-	a	-	17	-	220	-	38	b	-
Graham	a	15	-	a	-	c	-	61	42	-
Grant	a	32	a	b	a	c	a	239	84	a
Gray	a	b	a	c	b	c	a	65	79	-
Greeley	-	a	-	b	-	c	a	a	b	-
Greenwood	a	b	-	a	-	e	a	99	40	-
Hamilton	-	a	-	a	-	c	a	29	36	-

**Mid-March Employment in Kansas, by Industry and County, 2008**

<b>County</b>	<b>Real Estate</b>	<b>Prof. Services</b>	<b>Management</b>	<b>Admin. Support</b>	<b>Educational Services</b>	<b>Health Care</b>	<b>Arts and Recreation</b>	<b>Accommod. and Food Service</b>	<b>Other Services</b>	<b>Unclassified</b>
Harper	a	b	-	b	-	e	15	177	66	a
Harvey	83	246	b	270	723	2,840	53	988	577	a
Haskell	a	47	-	a	a	c	4	42	50	-
Hodgeman	a	a	-	6	-	c	a	10	a	-
Jackson	b	75	-	a	a	518	a	1,061	117	a
Jefferson	21	71	-	b	a	335	b	157	159	-
Jewell	a	12	-	a	b	c	a	46	b	a
Johnson	5,117	285	117	261	4,846	31,736	4,675	25,994	135	a
Kearny	a	b	-	-	a	c	-	47	b	-
Kingman	6	b	-	a	a	387	b	164	90	a
Kiowa	-	a	a	a	c	192	a	33	53	-
Labette	68	113	b	a	b	3,258	34	522	246	a
Lane	-	a	-	8	a	b	a	a	b	-
Leavenworth	187	755	b	631	511	2,708	126	1,307	825	a
Lincoln	a	a	-	b	-	128	a	61	38	-
Linn	a	a	-	a	-	b	a	b	b	-
Logan	a	24	b	a	-	c	b	88	50	-
Lyon	130	371	a	209	b	2,082	126	1,616	526	a
McPherson	b	188	98	435	883	2,155	b	954	717	a
Marion	a	145	a	36	e	643	a	237	203	-
Marshall	a	92	-	c	b	576	b	271	156	-
Meade	a	b	a	a	-	c	a	b	48	-
Miami	99	203	b	190	42	1,901	112	664	357	a
Mitchell	b	b	b	b	b	f	b	182	133	-
Montgomery	166	203	e	743	a	2,470	69	1,403	502	a
Morris	a	b	-	a	a	e	17	153	38	-
Morton	-	b	-	a	-	243	a	b	45	a
Nemaha	a	106	a	53	33	807	a	169	160	a
Neosho	25	138	-	358	a	1,158	37	428	280	a
Ness	-	a	-	b	-	c	-	56	b	-
Norton	a	b	b	b	-	431	a	183	64	a
Osage	a	57	-	36	a	1,827	a	183	147	a
Osborne	-	b	a	24	-	249	b	68	60	-
Ottawa	a	21	-	a	b	261	a	c	45	-
Pawnee	a	56	-	a	a	g	10	179	74	a
Phillips	a	84	c	b	-	353	a	143	101	-
Pottawatomie	53	149	a	169	60	1,497	b	386	342	-
Pratt	b	123	b	133	-	852	17	460	200	-

**Mid-March Employment in Kansas, by Industry and County, 2008**

County	Real Estate	Prof. Services	Management	Admin. Support	Educational Services	Health Care	Arts and Recreation	Accommod. and Food Service	Other Services	Unclassified
Rawlins	a	a	-	10	-	179	a	24	24	a
Reno	161	685	587	109	197	4,790	366	2,473	995	-
Republic	a	b	a	a	-	328	a	124	78	-
Rice	a	122	b	57	b	390	b	240	143	-
Riley	529	924	c	167	476	3,531	204	3,474	187	a
Rooks	a	31	b	a	a	213	a	95	92	-
Rush	-	b	-	a	-	c	a	b	b	-
Russell	b	61	a	a	-	e	10	231	b	-
Saline	296	129	702	998	513	4,264	477	2,645	108	-
Scott	a	45	a	17	a	292	15	107	75	-
Sedgwick	4,024	946	360	152	4,367	32,537	3,104	21,957	100	a
Seward	b	135	b	194	a	1,227	50	827	287	-
Shawnee	1,072	360	147	482	628	15,771	1,060	7,198	516	a
Sheridan	-	b	-	-	-	c	a	20	b	-
Sherman	29	88	-	b	a	415	22	292	103	-
Smith	3	25	-	a	a	e	-	71	59	a
Stafford	-	b	a	a	-	c	a	32	b	a
Stanton	a	a	a	-	-	b	-	19	44	-
Stevens	-	71	-	a	a	c	a	116	32	-
Sumner	51	85	b	b	b	997	6	594	268	-
Thomas	24	79	a	50	b	444	28	475	205	-
Trego	a	b	-	a	-	c	a	104	b	a
Wabaunsee	a	8	-	c	a	121	a	b	45	a
Wallace	a	a	-	a	-	57	a	b	b	-
Washington	a	32	a	13	c	418	a	143	c	-
Wichita	-	a	a	a	-	b	a	b	b	-
Wilson	a	b	a	b	a	646	a	186	b	a
Woodson	a	a	-	-	-	194	a	b	a	-
Wyandotte	746	126	923	312	499	11,418	1,057	5,126	241	a
Statewide	-	c	a	991	-	a	-	-	a	-
<b>Kansas</b>	<b>15,533</b>	<b>57,164</b>	<b>21,899</b>	<b>74,272</b>	<b>19,286</b>	<b>179,672</b>	<b>14,987</b>	<b>108,086</b>	<b>53,386</b>	<b>115</b>

Source: U.S. Census Bureau, County Business Patterns, <http://www.census.gov/econ/cbp/> (accessed August 4, 2010).

Data suppression is based on employment size. Suppression codes: a=0-19 employees; b=20-99 employees; c=100-249 employees; e=250-499 employees; f=500-999 employees; g=1,000-2,499 employees; and h=2,500-4,999 employees.

Single dash (-) indicates not available or represents zero.

Industry Description: Real Estate=Real estate and rental and leasing; Prof. Services=Professional, scientific, and technical services; Management=Management of companies and enterprises; Admin. Support=Administrative, support, waste management, and remediation services; Health Care=Health care and social assistance; Arts and Recreation=Arts, entertainment, and recreation; Accommod. and Food Service=Accommodation and food service; Other Services=Other services (except public administration); and Unclassified=Unclassified establishments.

**Farm and Nonfarm Employment in Kansas, by County, 2007-2009**

County	2007		2008		2009	
	Farm	Nonfarm	Farm	Nonfarm	Farm	Nonfarm
Allen	562	8,773	555	8,785	550	8,669
Anderson	678	3,602	668	3,653	663	3,618
Atchison	632	10,020	626	9,994	622	9,194
Barber	417	3,018	407	3,162	403	3,336
Barton	849	19,414	813	20,218	799	20,590
Bourbon	885	9,211	871	9,111	865	8,883
Brown	612	6,816	599	6,755	592	6,850
Butler	1,446	29,651	1,410	30,244	1,395	30,695
Chase	237	2,878	234	2,935	231	3,012
Chautauqua	379	1,997	369	2,125	364	2,260
Cherokee	758	11,341	747	11,491	742	11,163
Cheyenne	421	1,274	412	1,293	407	1,293
Clark	292	1,422	283	1,436	279	1,444
Clay	559	6,129	547	6,190	541	6,094
Cloud	447	5,301	439	5,301	435	5,217
Coffey	626	5,910	618	6,128	613	6,202
Comanche	240	1,001	237	1,023	233	1,000
Cowley	983	20,192	967	19,793	958	19,151
Crawford	859	20,409	846	20,728	839	19,411
Decatur	323	1,640	313	1,697	308	1,700
Dickinson	1,013	8,745	994	8,689	984	8,512
Doniphan	528	3,556	519	3,669	514	3,276
Douglas	976	65,452	961	64,295	953	64,353
Edwards	402	1,503	392	1,552	386	1,514
Elk	340	1,161	334	1,183	331	1,174
Ellis	722	22,760	704	23,517	696	24,302
Ellsworth	363	3,753	360	3,797	356	3,794
Finney	773	21,960	730	22,690	709	22,776
Ford	772	19,843	745	20,465	733	20,525
Franklin	1,059	13,478	1,036	13,267	1,025	13,127
Geary	241	31,498	234	33,236	231	34,292
Gove	505	1,713	485	1,714	476	1,784
Graham	437	2,469	432	2,554	428	2,621
Grant	473	4,717	448	4,680	437	4,732
Gray	719	3,560	679	3,653	660	3,734
Greeley	293	848	288	876	283	872
Greenwood	530	2,355	520	2,413	514	2,366
Hamilton	559	1,303	532	1,326	521	1,338
Harper	481	3,724	473	3,789	466	3,831
Harvey	807	23,591	792	24,420	785	24,351
Haskell	521	1,818	487	1,852	469	1,876
Hodgeman	403	804	390	818	384	816
Jackson	1,038	8,493	1,024	8,362	1,017	8,126
Jefferson	1,057	5,168	1,045	5,217	1,038	5,182
Jewell	508	1,646	500	1,672	496	1,625
Johnson	660	414,124	638	414,465	628	400,994
Kearny	478	1,625	455	1,651	443	1,572
Kingman	841	4,508	828	4,673	819	4,756
Kiowa	376	1,507	372	1,454	368	1,561
Labette	979	13,850	962	14,110	956	13,370
Lane	413	1,064	388	1,080	380	1,116
Leavenworth	1,168	34,874	1,153	35,305	1,141	35,784
Lincoln	439	1,703	433	1,697	429	1,690
Linn	846	3,352	834	3,276	829	3,174
Logan	250	1,942	245	1,924	242	1,924

**Farm and Nonfarm Employment in Kansas, by County, 2007-2009**

County	2007		2008		2009	
	Farm	Nonfarm	Farm	Nonfarm	Farm	Nonfarm
Lyon	893	20,431	883	19,335	875	18,342
McPherson	1,067	21,831	1,054	21,394	1,046	20,909
Marion	932	4,919	919	4,945	911	4,848
Marshall	861	6,894	850	6,873	843	6,500
Meade	518	2,041	496	2,076	487	2,115
Miami	1,411	10,228	1,386	10,171	1,380	9,654
Mitchell	394	4,127	385	4,341	380	4,381
Montgomery	949	21,031	933	20,734	925	19,984
Morris	511	1,887	499	1,866	493	1,815
Morton	470	1,818	448	1,860	437	1,821
Nemaha	1,032	5,738	1,010	5,725	1,001	5,780
Neosho	715	9,897	706	9,806	700	9,199
Ness	469	2,170	464	2,286	461	2,397
Norton	371	3,338	364	3,435	359	3,480
Osage	1,009	4,522	995	4,653	988	4,567
Osborne	357	2,332	351	2,361	348	2,378
Ottawa	517	2,144	509	2,171	505	2,097
Pawnee	487	4,621	472	4,420	463	4,467
Phillips	496	3,734	486	3,719	481	3,747
Pottawatomie	823	14,509	809	14,879	799	14,749
Pratt	523	6,278	511	6,352	505	6,355
Rawlins	343	2,320	334	2,358	330	2,413
Reno	1,643	35,277	1,606	36,006	1,592	35,818
Republic	701	2,897	682	2,887	674	2,823
Rice	650	4,387	628	4,547	619	4,505
Riley	548	35,670	533	37,024	526	36,680
Rooks	411	2,578	406	2,552	402	2,485
Rush	448	1,674	442	1,664	437	1,595
Russell	460	3,406	457	3,369	453	3,255
Saline	708	38,865	696	38,711	690	37,998
Scott	452	2,498	424	2,548	412	2,598
Sedgwick	1,349	320,815	1,327	326,527	1,314	315,182
Seward	425	14,704	404	14,994	397	14,721
Shawnee	838	116,792	826	118,118	820	115,399
Sheridan	413	1,344	401	1,383	395	1,411
Sherman	431	3,724	423	3,696	416	3,623
Smith	468	1,975	463	1,930	457	1,925
Stafford	596	1,844	580	1,876	572	1,956
Stanton	387	1,075	372	1,074	365	1,106
Stevens	487	2,671	471	2,675	463	2,695
Sumner	1,080	8,155	1,060	8,406	1,049	8,214
Thomas	514	4,524	497	4,553	488	4,473
Trego	358	1,427	354	1,516	350	1,493
Wabaunsee	626	2,260	617	2,690	610	2,321
Wallace	283	815	280	775	276	789
Washington	817	2,488	801	2,457	790	2,403
Wichita	369	1,147	357	1,173	349	1,146
Wilson	514	5,363	507	5,288	503	4,685
Woodson	311	1,080	307	1,080	306	1,100
Wyandotte	177	97,565	173	97,742	172	95,751
<b>Kansas</b>	<b>65,787</b>	<b>1,778,296</b>	<b>64,331</b>	<b>1,794,424</b>	<b>63,580</b>	<b>1,756,770</b>

Source: U.S. Bureau of Economic Analysis, Regional Economic Accounts, Local Area Personal Income, Table CA25, <http://www.bea.gov/regional/reis/> (accessed April 25, 2011).

Based on North American Industry Classification System (NAICS) codes.

Number of jobs includes full-time and part-time employment.

Data revised annually.

**Average Annual Wages, by State  
2007-2009**

State	2007	2008	2009	Percent Change 2008-2009
Alabama	\$37,492	\$38,734	\$39,413	1.8
Alaska	43,972	45,805	47,100	2.8
Arizona	41,551	42,518	42,783	0.6
Arkansas	34,118	34,919	35,685	2.2
California	50,538	51,487	51,566	0.2
Colorado	45,396	46,614	46,855	0.5
Connecticut	58,029	58,395	57,754	-1.1
Delaware	47,308	47,569	47,716	0.3
District of Columbia	73,450	76,518	77,460	1.2
Florida	39,746	40,568	40,958	1.0
Georgia	42,178	42,585	42,859	0.6
Hawaii	39,466	40,675	41,328	1.6
Idaho	33,544	33,897	34,121	0.7
Illinois	47,685	48,719	48,388	-0.7
Indiana	37,528	38,403	38,271	-0.3
Iowa	35,738	36,964	37,165	0.5
<b>Kansas</b>	<b>37,044</b>	<b>38,178</b>	<b>38,147</b>	<b>-0.1</b>
Kentucky	36,480	37,434	37,987	1.5
Louisiana	38,229	40,381	40,557	0.4
Maine	35,129	36,317	36,614	0.8
Maryland	48,241	49,535	50,595	2.1
Massachusetts	55,244	56,746	56,239	-0.9
Michigan	43,357	44,245	43,643	-1.4
Minnesota	44,375	45,826	45,328	-1.1
Mississippi	32,291	33,508	33,843	1.0
Missouri	38,603	40,361	40,019	-0.8
Montana	32,224	33,305	33,759	1.4
Nebraska	35,238	36,243	36,638	1.1
Nevada	42,149	42,984	42,743	-0.6
New Hampshire	43,863	44,912	44,929	0.0
New Jersey	53,853	55,280	55,146	-0.2
New Mexico	36,379	37,910	38,518	1.6
New York	59,439	60,288	57,678	-4.3
North Carolina	38,909	39,740	39,839	0.2
North Dakota	33,086	35,075	35,970	2.6
Ohio	39,917	40,784	40,904	0.3
Oklahoma	35,491	37,284	37,246	-0.1
Oregon	39,569	40,500	40,753	0.6
Pennsylvania	43,239	44,381	44,826	1.0
Rhode Island	41,646	43,029	43,434	0.9
South Carolina	35,393	36,252	36,755	1.4
South Dakota	31,655	32,822	33,347	1.6
Tennessee	39,082	39,996	40,260	0.7
Texas	44,695	45,939	45,688	-0.5
Utah	37,054	37,980	38,607	1.7
Vermont	36,956	38,328	38,766	1.1
Virginia	45,995	47,241	48,235	2.1
Washington	45,021	46,569	47,463	1.9
West Virginia	34,106	35,987	36,898	2.5
Wisconsin	38,050	39,119	39,134	0.0
Wyoming	39,254	41,487	40,704	-1.9
<b>United States</b>	<b>\$44,458</b>	<b>\$45,563</b>	<b>\$45,551</b>	<b>0.0</b>

Source: U.S. Bureau of Labor Statistics, Quarterly Census of Employment and Wages (QCEW), <http://www.bls.gov/cew/> (accessed September 24, 2010).

Includes workers covered by Unemployment Insurance and Unemployment Compensation for Federal Employees programs.

**Average Annual Wages by Industry, Kansas and the U.S.  
2007-2009**

Area and Industry	2007	2008	2009	Percent Change 2008-2009
<b>Kansas</b>				
Private Industry*	\$37,579	\$38,735	\$38,511	-0.6
Agriculture, Forestry, Fishing, and Hunting	31,347	32,647	33,116	1.4
Mining, Quarrying, and Oil and Gas Extraction	49,046	51,618	48,138	-6.7
Utilities	70,878	73,039	75,592	3.5
Construction	41,178	43,504	43,267	-0.5
Manufacturing	48,213	48,396	48,700	0.6
Wholesale Trade	53,188	55,530	55,697	0.3
Retail Trade	22,966	23,095	23,046	-0.2
Transportation and Warehousing	36,653	37,506	37,504	0.0
Information	63,263	63,969	61,129	-4.4
Finance and Insurance	52,540	54,219	53,813	-0.7
Real Estate and Rental and Leasing	30,901	32,322	32,055	-0.8
Professional and Technical Services	52,889	54,850	55,174	0.6
Management of Companies and Enterprises	80,529	82,974	77,396	-6.7
Administrative and Waste Services	29,911	31,228	31,391	0.5
Educational Services	29,048	30,517	30,833	1.0
Health Care and Social Assistance	35,086	36,342	37,182	2.3
Arts, Entertainment, and Recreation	14,359	15,003	15,009	0.0
Accommodation and Food Services	12,304	12,536	12,712	1.4
Other Services, except Public Administration	24,907	25,956	25,539	-1.6
Government	34,617	35,681	36,599	2.6
Federal	56,566	56,302	57,732	2.5
State	43,748	44,924	46,155	2.7
Local	29,439	30,663	31,382	2.3
<b>United States</b>				
Private Industry*	\$44,362	\$45,371	\$45,146	-0.5
Agriculture, Forestry, Fishing, and Hunting	25,191	25,986	26,017	0.1
Mining, Quarrying, and Oil and Gas Extraction	82,019	87,160	85,533	-1.9
Utilities	82,275	84,153	84,877	0.9
Construction	46,784	49,013	49,312	0.6
Manufacturing	53,489	54,400	54,854	0.8
Wholesale Trade	60,719	61,843	61,588	-0.4
Retail Trade	26,124	26,179	26,161	-0.1
Transportation and Warehousing	42,615	42,962	42,819	-0.3
Information	69,140	70,787	71,182	0.6
Finance and Insurance	84,952	85,268	79,736	-6.5
Real Estate and Rental and Leasing	43,449	43,240	42,248	-2.3
Professional and Technical Services	72,033	74,366	74,738	0.5
Management of Companies and Enterprises	95,519	94,841	91,405	-3.6
Administrative and Waste Services	30,897	32,097	32,578	1.5
Educational Services	39,485	40,862	41,974	2.7
Health Care and Social Assistance	40,686	42,154	43,217	2.5
Arts, Entertainment, and Recreation	30,909	31,954	31,627	-1.0
Accommodation and Food Services	16,363	16,692	16,690	0.0
Other Services, except Public Administration	27,970	28,773	28,810	0.1
Government	44,968	46,568	47,548	2.1
Federal	64,871	66,293	67,739	2.2
State	45,903	47,980	48,712	1.5
Local	40,790	42,274	43,147	2.1

Source: U.S. Bureau of Labor Statistics, Quarterly Census of Employment and Wages (QCEW), <http://www.bls.gov/cew/> (accessed September 24, 2010).

Includes workers covered by Unemployment Insurance and Unemployment Compensation for Federal Employees programs.

\* Includes other industries, not shown separately.

**Workers with Earnings at or below the Federal Minimum Wage, by State  
2010 Annual Averages**

State	Number of Workers, 16 years and over (in thousands)				Percent of hourly workers at or below minimum wage	Rank
	Total paid hourly rates	At minimum wage	Below minimum wage	Total at or below minimum wage		
Alabama	1,141	59	47	106	9.3	3
Alaska	208	1	3	4	1.9	49
Arizona	1,492	38	45	83	5.6	31
Arkansas	705	32	24	56	7.9	11
California	8,619	55	119	174	2.0	48
Colorado	1,135	14	41	55	4.8	39
Connecticut	866	5	30	35	4.0	42
Delaware	203	6	8	14	6.9	20
District of Columbia	97	1	4	5	5.2	38
Florida	3,778	100	153	253	6.7	21
Georgia	1,912	85	78	163	8.5	7
Hawaii	318	8	7	15	4.7	41
Idaho	396	15	15	30	7.6	16
Illinois	3,145	34	92	126	4.0	42
Indiana	1,610	60	66	126	7.8	14
Iowa	947	33	28	61	6.4	24
<b>Kansas</b>	<b>771</b>	<b>30</b>	<b>29</b>	<b>59</b>	<b>7.7</b>	<b>15</b>
Kentucky	1,119	43	48	91	8.1	9
Louisiana	981	29	58	87	8.9	5
Maine	369	3	11	14	3.8	44
Maryland	1,311	21	56	77	5.9	29
Massachusetts	1,519	10	35	45	3.0	47
Michigan	2,478	30	107	137	5.5	33
Minnesota	1,497	39	51	90	6.0	28
Mississippi	663	34	29	63	9.5	1
Missouri	1,531	55	68	123	8.0	10
Montana	255	12	5	17	6.7	21
Nebraska	536	17	13	30	5.6	31
Nevada	651	10	13	23	3.5	45
New Hampshire	356	5	14	19	5.3	37
New Jersey	1,612	31	82	113	7.0	19
New Mexico	476	6	20	26	5.5	33
New York	4,122	103	161	264	6.4	24
North Carolina	2,121	73	95	168	7.9	11
North Dakota	200	7	6	13	6.5	23
Ohio	3,185	49	123	172	5.4	36
Oklahoma	835	39	33	72	8.6	6
Oregon	994	6	10	16	1.6	50
Pennsylvania	3,255	91	115	206	6.3	26
Rhode Island	294	4	10	14	4.8	39
South Carolina	1,050	32	46	78	7.4	17
South Dakota	257	7	8	15	5.8	30
Tennessee	1,503	64	60	124	8.3	8
Texas	5,763	268	282	550	9.5	1
Utah	739	21	24	45	6.1	27
Vermont	184	1	5	6	3.3	46
Virginia	1,712	53	83	136	7.9	11
Washington	1,739	7	12	19	1.1	51
West Virginia	430	23	17	40	9.3	3
Wisconsin	1,657	44	47	91	5.5	33
Wyoming	163	6	6	12	7.4	17
<b>United States</b>	<b>72,902</b>	<b>1,820</b>	<b>2,541</b>	<b>4,361</b>	<b>6.0</b>	

Source: U.S. Department of Labor, Bureau of Labor Statistics, Characteristics of Minimum Wage Workers: 2010, <http://www.bls.gov/cps/minwage2010tbls.htm> (accessed March 18, 2011).

Data exclude all self-employed persons whether or not their businesses are incorporated.

Data may not sum to totals due to rounding.

**Average Wage per Job in Kansas, by County  
Full- and Part-Time by Place of Work  
2001-2009**

<b>County</b>	<b>2001</b>	<b>2002</b>	<b>2003</b>	<b>2004</b>	<b>2005</b>	<b>2006</b>	<b>2007</b>	<b>2008</b>	<b>2009</b>
Allen	\$22,803	\$23,160	\$23,832	\$24,409	\$25,438	\$26,680	\$27,375	\$28,851	\$28,907
Anderson	19,605	20,248	21,319	21,951	23,748	24,389	25,436	26,685	27,110
Atchison	24,406	24,860	25,729	26,577	27,282	29,282	29,658	31,667	30,875
Barber	22,067	22,546	22,951	24,554	25,899	26,921	28,009	28,879	28,147
Barton	24,284	24,573	25,517	26,612	27,916	29,739	31,487	34,723	33,309
Bourbon	22,153	24,092	24,609	25,573	26,156	27,181	28,073	28,878	29,180
Brown	22,352	23,385	24,133	25,186	26,013	26,802	29,989	28,992	31,574
Butler	23,967	24,679	24,769	25,664	26,730	28,228	29,902	31,117	31,623
Chase	19,060	18,559	19,782	20,315	22,814	23,738	24,592	25,914	26,157
Chautauqua	18,164	18,541	18,993	19,224	19,871	21,092	22,703	23,239	24,479
Cherokee	25,060	25,491	26,271	27,449	27,481	28,437	30,535	32,231	32,433
Cheyenne	21,470	21,263	20,705	21,162	22,452	24,017	26,449	28,064	28,306
Clark	23,430	22,847	23,159	23,988	25,491	26,345	26,975	28,265	28,003
Clay	18,781	19,619	20,236	21,062	21,752	22,251	23,621	25,304	25,739
Cloud	19,845	20,368	20,474	21,450	22,550	23,375	24,969	26,015	25,862
Coffey	32,076	34,428	36,295	35,556	37,839	37,904	38,876	42,159	44,362
Comanche	17,313	18,171	19,182	20,257	20,051	21,074	21,722	22,342	23,476
Cowley	26,100	26,025	26,947	27,646	28,760	30,288	31,187	32,074	32,623
Crawford	23,042	23,414	24,369	25,444	25,737	28,105	28,032	28,411	29,415
Decatur	17,312	17,993	18,485	18,649	20,043	21,151	24,867	25,703	25,582
Dickinson	21,492	22,215	23,096	23,983	24,721	25,913	27,497	29,044	29,426
Doniphan	25,310	25,406	25,098	26,774	28,584	29,481	33,111	30,943	30,833
Douglas	24,148	24,884	25,256	26,752	27,635	29,057	29,942	31,397	31,875
Edwards	22,684	23,770	24,249	25,247	25,481	27,540	30,106	31,395	31,457
Elk	17,613	16,680	17,590	18,086	19,471	20,792	21,371	22,183	22,394
Ellis	22,350	22,787	23,968	25,374	26,138	27,311	29,176	31,256	31,396
Ellsworth	22,938	23,123	23,985	25,274	25,340	26,309	28,108	29,980	29,332
Finney	25,399	25,712	26,848	27,782	27,866	29,606	31,125	33,214	32,738
Ford	26,335	26,586	27,026	27,511	28,578	29,713	31,785	32,374	32,719
Franklin	24,728	25,432	26,183	26,653	27,915	30,171	31,163	32,597	32,946
Geary	28,039	30,268	32,007	33,631	36,716	39,805	43,493	46,922	47,293
Gove	19,987	19,656	20,713	21,544	21,251	22,002	23,371	25,045	24,836
Graham	20,094	20,251	21,024	22,396	24,262	26,646	28,012	30,527	29,021
Grant	28,529	28,603	30,002	31,122	32,651	33,629	36,417	39,167	39,323
Gray	22,566	22,730	24,255	25,036	25,393	27,136	29,471	31,769	31,225
Greeley	20,026	21,028	22,025	23,812	23,548	25,329	28,008	30,809	31,143
Greenwood	19,465	20,340	20,606	21,887	23,047	25,845	27,203	28,292	27,906

**Average Wage per Job in Kansas, by County  
Full- and Part-Time by Place of Work  
2001-2009**

<b>County</b>	<b>2001</b>	<b>2002</b>	<b>2003</b>	<b>2004</b>	<b>2005</b>	<b>2006</b>	<b>2007</b>	<b>2008</b>	<b>2009</b>
Hamilton	\$23,135	\$23,509	\$24,864	\$26,342	\$26,002	\$27,352	\$32,604	\$33,935	\$32,400
Harper	20,807	21,749	22,961	24,022	24,266	25,469	28,081	28,332	28,966
Harvey	26,353	26,724	27,070	27,780	28,556	29,378	31,028	32,664	32,626
Haskell	26,476	27,654	28,996	30,519	30,690	32,729	36,790	39,103	36,709
Hodgeman	19,392	19,799	20,485	22,199	22,816	24,218	28,025	28,607	27,791
Jackson	23,094	24,153	24,535	25,595	26,129	26,809	28,048	27,943	28,796
Jefferson	23,020	23,918	25,731	25,276	27,326	28,409	30,254	31,211	32,851
Jewell	17,657	18,078	18,702	19,020	19,744	21,335	22,441	22,826	25,697
Johnson	37,707	38,727	40,065	41,739	42,959	44,882	46,830	48,096	47,793
Kearny	23,150	23,876	25,068	26,981	27,109	28,881	31,230	31,640	30,904
Kingman	21,962	22,767	23,373	24,476	25,871	27,093	28,405	31,182	30,464
Kiowa	21,127	21,985	22,722	23,417	23,417	23,939	26,658	27,349	26,479
Labette	21,738	22,753	23,584	24,603	25,607	27,332	28,645	29,405	29,911
Lane	21,439	21,494	23,309	23,912	23,483	24,208	27,063	29,114	30,658
Leavenworth	34,052	35,822	36,999	38,992	40,789	43,124	44,452	46,621	49,190
Lincoln	17,774	18,157	18,079	18,963	19,596	20,700	22,005	25,094	26,038
Linn	27,324	26,878	28,386	29,356	30,710	32,937	32,830	35,360	37,091
Logan	20,343	20,984	21,311	21,938	23,111	24,044	24,973	26,074	27,762
Lyon	23,747	23,918	24,682	25,722	26,307	27,454	28,358	29,941	29,930
McPherson	26,691	27,553	28,379	29,344	30,373	31,677	32,678	34,493	34,714
Marion	19,184	19,954	20,509	21,946	21,982	22,893	24,343	25,758	25,824
Marshall	24,523	24,764	25,854	27,683	28,438	29,448	32,338	33,075	31,321
Meade	22,050	21,855	22,078	23,581	24,515	25,807	28,113	29,503	29,799
Miami	23,653	24,544	25,251	26,403	27,392	28,578	30,326	31,576	32,661
Mitchell	23,035	23,386	23,744	25,283	26,007	27,031	28,282	29,551	29,381
Montgomery	23,668	24,039	24,580	25,699	27,063	28,674	31,342	31,055	30,973
Morris	21,959	22,547	23,030	23,996	25,129	26,607	27,449	28,867	28,860
Morton	23,720	22,873	24,567	26,445	27,637	30,052	33,585	36,352	33,767
Nemaha	22,218	23,010	23,462	24,357	25,761	26,494	28,167	29,521	29,181
Neosho	22,993	23,602	24,497	25,178	26,730	28,406	29,666	30,766	30,148
Ness	20,979	21,292	23,263	23,823	25,851	28,058	30,872	32,846	31,788
Norton	22,210	22,278	23,229	24,760	24,660	25,999	29,243	29,919	30,011
Osage	19,314	19,361	20,277	20,932	22,237	22,757	23,199	24,064	24,611
Osborne	17,365	17,521	17,724	19,097	19,769	20,787	22,441	23,446	24,263
Ottawa	20,003	20,471	21,186	21,902	22,454	23,995	25,488	26,585	27,064
Pawnee	23,189	24,009	24,599	26,294	25,194	27,123	29,312	30,260	30,598
Phillips	21,645	22,115	23,118	23,917	24,680	25,798	27,057	28,959	28,792

**Average Wage per Job in Kansas, by County  
Full- and Part-Time by Place of Work  
2001-2009**

<b>County</b>	<b>2001</b>	<b>2002</b>	<b>2003</b>	<b>2004</b>	<b>2005</b>	<b>2006</b>	<b>2007</b>	<b>2008</b>	<b>2009</b>
Pottawatomie	\$25,061	\$25,158	\$25,495	\$26,582	\$28,430	\$30,037	\$31,291	\$33,178	\$32,678
Pratt	23,632	23,827	24,914	26,045	26,921	28,673	30,758	32,398	30,984
Rawlins	19,884	21,043	21,222	21,574	22,438	23,616	25,851	27,803	27,893
Reno	26,607	26,887	27,441	28,245	29,076	29,991	31,276	31,393	31,722
Republic	19,263	19,224	19,762	19,964	20,357	21,681	22,737	24,394	25,339
Rice	21,622	22,245	23,641	24,015	24,787	26,513	28,444	29,733	29,077
Riley	23,537	24,408	25,122	26,791	27,241	28,801	29,662	30,644	30,945
Rooks	20,558	21,473	22,255	23,893	24,705	26,335	28,070	30,152	29,389
Rush	21,742	22,682	23,646	24,470	26,199	26,200	27,616	28,983	28,137
Russell	19,785	20,330	20,435	21,553	23,865	25,563	27,112	29,574	29,857
Saline	26,883	27,604	28,595	29,310	30,207	31,233	32,596	33,990	34,117
Scott	23,536	24,369	26,188	27,480	28,438	29,315	32,830	34,001	33,339
Sedgwick	33,852	34,457	34,841	36,340	37,788	40,669	41,548	42,543	42,266
Seward	26,929	26,778	27,820	28,402	29,608	31,251	32,078	33,648	32,750
Shawnee	31,234	32,432	32,697	34,237	35,637	37,281	38,685	39,243	40,307
Sheridan	22,052	23,280	23,362	24,798	25,240	26,140	29,507	32,050	30,880
Sherman	21,043	21,453	21,492	22,971	23,789	24,864	26,017	27,407	27,808
Smith	18,963	19,001	20,047	20,382	21,053	21,500	22,371	23,674	24,057
Stafford	18,800	19,556	20,175	21,201	22,140	23,098	26,192	27,364	27,234
Stanton	22,584	23,192	24,778	26,599	26,062	28,088	35,015	37,298	37,474
Stevens	25,680	26,593	27,761	28,716	28,400	30,122	32,514	34,696	34,005
Sumner	23,927	24,378	24,888	26,019	26,700	27,784	29,314	30,338	30,045
Thomas	20,576	21,293	21,929	22,578	23,143	24,626	26,884	28,679	29,195
Trego	18,323	18,594	18,997	19,775	21,084	22,477	25,326	28,736	26,792
Wabaunsee	20,625	21,109	20,666	22,811	22,936	23,695	26,332	37,890	28,035
Wallace	18,978	19,291	20,180	20,783	20,837	22,917	25,514	26,730	27,347
Washington	17,568	18,268	19,139	19,659	20,417	21,555	23,386	24,749	24,812
Wichita	25,092	25,153	26,552	28,986	29,134	30,431	34,638	36,837	35,607
Wilson	23,845	24,851	25,650	26,701	28,604	28,265	29,529	30,676	30,877
Woodson	18,640	19,301	20,038	20,429	22,655	24,192	24,872	27,297	26,120
Wyandotte	34,975	36,175	37,252	38,793	39,437	41,291	42,019	43,630	42,948
<b>Kansas</b>	<b>\$30,261</b>	<b>\$31,030</b>	<b>\$31,844</b>	<b>\$33,235</b>	<b>\$34,429</b>	<b>\$36,339</b>	<b>\$37,851</b>	<b>\$39,127</b>	<b>\$39,108</b>

Source: U.S. Bureau of Economic Analysis, Regional Economic Information System, Table CA34, <http://www.bea.gov/regional/reis/> (accessed January 11, 2011).

The employment measure is the number of jobs, full-time plus part-time.

Data revised annually.

**Average Wage per Job in Kansas, by Metropolitan and Micropolitan Area  
Full- and Part-Time by Place of Work  
2001-2009**

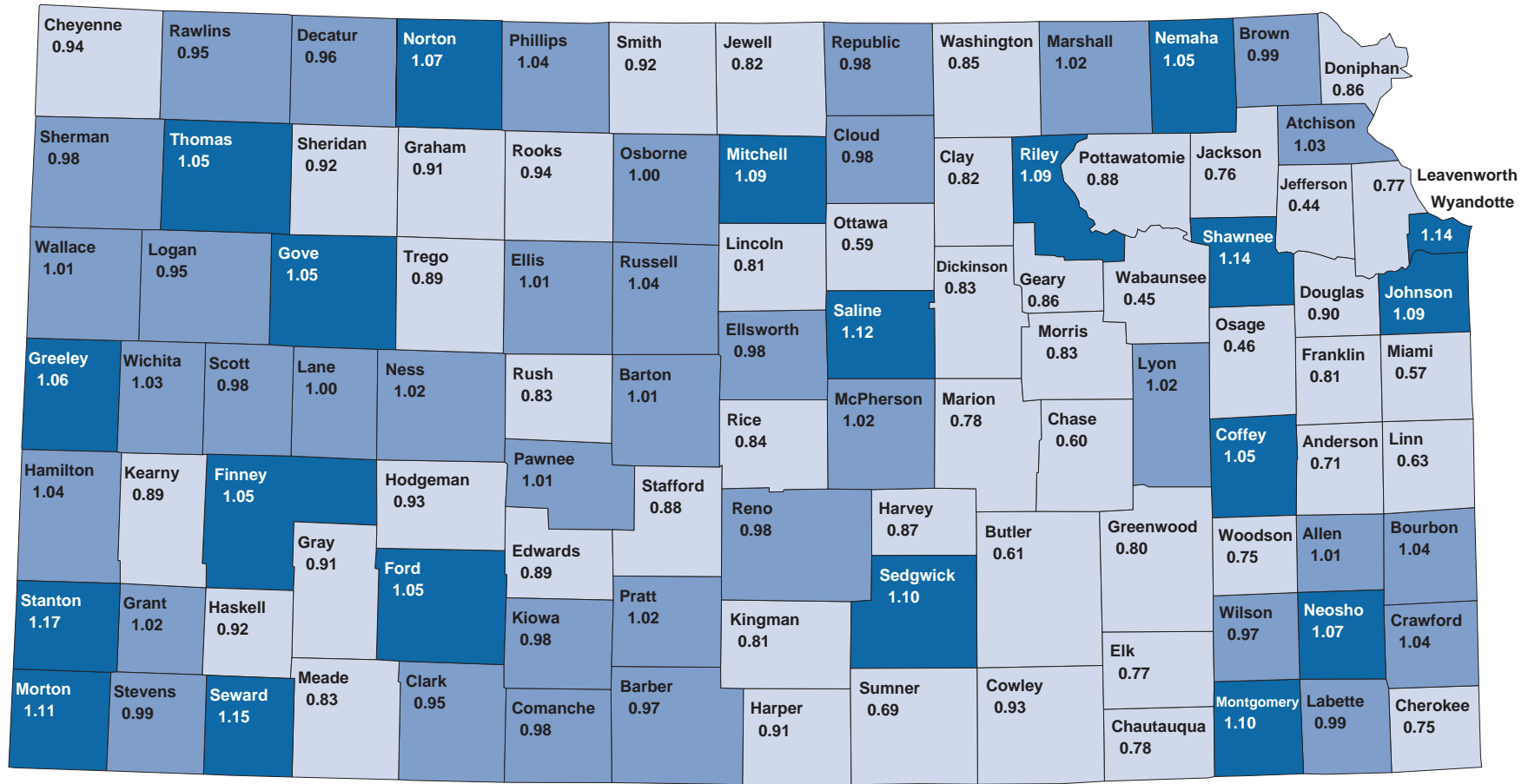
<b>Area</b>	<b>2001</b>	<b>2002</b>	<b>2003</b>	<b>2004</b>	<b>2005</b>	<b>2006</b>	<b>2007</b>	<b>2008</b>	<b>2009</b>
<b>Kansas</b>	<b>\$30,261</b>	<b>\$31,030</b>	<b>\$31,844</b>	<b>\$33,235</b>	<b>\$34,429</b>	<b>\$36,339</b>	<b>\$37,851</b>	<b>\$39,127</b>	<b>\$39,108</b>
Counties									
Kansas (Metro Portion)	33,048	33,962	34,754	36,326	37,621	39,743	41,174	42,408	42,373
Kansas (Non-Metro Portion)	23,818	24,310	25,137	26,083	26,936	28,268	29,821	31,125	31,155
Metropolitan Statistical Areas									
Kansas City, MO-KS	36,063	37,065	37,971	39,417	40,688	42,378	44,082	45,425	45,641
Lawrence, KS	24,148	24,884	25,256	26,752	27,635	29,057	29,942	31,397	31,875
Manhattan, KS	25,387	26,635	27,685	29,328	30,893	33,268	35,524	37,694	38,102
St. Joseph, MO-KS	27,500	28,443	28,979	29,876	30,991	32,216	33,027	33,964	34,864
Topeka, KS	30,179	31,290	31,607	33,014	34,360	35,880	37,288	38,005	38,898
Wichita, KS	32,694	33,282	33,619	35,032	36,400	39,081	40,064	41,093	40,841
Micropolitan Statistical Areas									
Atchison, KS	24,406	24,860	25,729	26,577	27,282	29,282	29,658	31,667	30,875
Coffeyville, KS	23,668	24,039	24,580	25,699	27,063	28,674	31,342	31,055	30,973
Dodge City, KS	26,335	26,586	27,026	27,511	28,578	29,713	31,785	32,374	32,719
Emporia, KS	23,547	23,684	24,480	25,486	26,148	27,276	28,179	29,740	29,736
Garden City, KS	25,399	25,712	26,848	27,782	27,866	29,606	31,125	33,214	32,738
Great Bend, KS	24,284	24,573	25,517	26,612	27,916	29,739	31,487	34,723	33,309
Hays, KS	22,350	22,787	23,968	25,374	26,138	27,311	29,176	31,256	31,396
Hutchinson, KS	26,607	26,887	27,441	28,245	29,076	29,991	31,276	31,393	31,722
Liberal, KS	26,929	26,778	27,820	28,402	29,608	31,251	32,078	33,648	32,750
McPherson, KS	26,691	27,553	28,379	29,344	30,373	31,677	32,678	34,493	34,714
Parsons, KS	21,738	22,753	23,584	24,603	25,607	27,332	28,645	29,405	29,911
Pittsburg, KS	23,042	23,414	24,369	25,444	25,737	28,105	28,032	28,411	29,415
Salina, KS	26,592	27,294	28,267	28,977	29,860	30,912	32,286	33,661	33,812
Winfield, KS	26,100	26,025	26,947	27,646	28,760	30,288	31,187	32,074	32,623
Combined Statistical Areas									
Kansas City-Overland Park-									
Kansas City, MO-KS	35,797	36,807	37,692	39,124	40,381	42,047	43,732	45,082	45,304
Wichita-Winfield, KS	32,356	32,904	33,277	34,657	36,030	38,652	39,628	40,670	40,461

Source: U.S. Bureau of Economic Analysis, Regional Economic Information System, Table CA34, <http://www.bea.gov/regional/reis/> (accessed January 11, 2011).

The employment measure is the number of jobs, full-time plus part-time.

Data revised annually.

## County Employment Residence Ratio, 2000



Source: Institute for Policy & Social Research; data from U.S. Census Bureau, Census 2000. Employment residence ratio is defined as the total number of workers in an area divided by the total number of workers living in the same area. A ratio higher than 1.0 indicates a county is attracting workers from other counties.

### Employment Residence Ratio

State: 1.00

